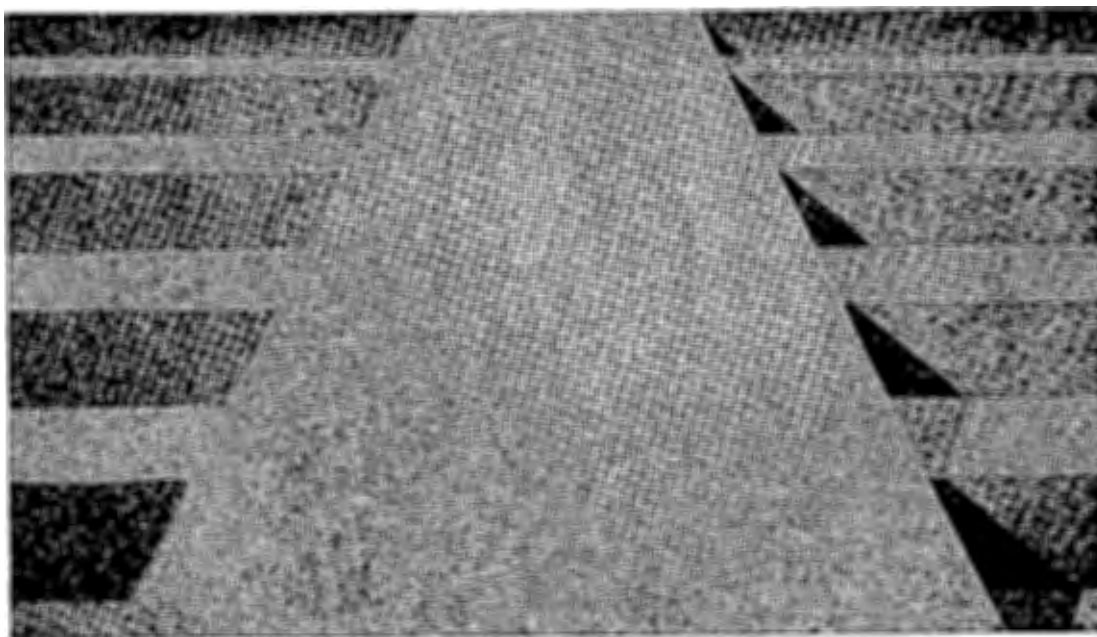
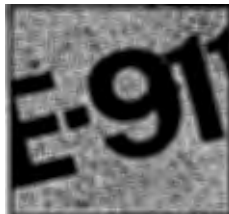
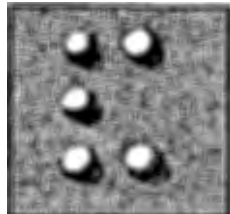
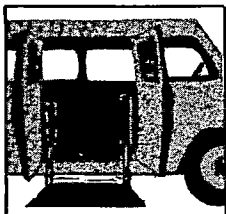


# SERVICES FOR --- PEOPLE

WITH DISABILITIES



TOWN OF WETHERSFIELD

---

## EMERGENCY NUMBERS AND SERVICES

The following services are available 24 hours/day, 7 days a week unless noted otherwise

### EMERGENCY – POLICE – FIRE - .MEDICAL

Voice, TDD/TT Users ..... 911  
TDD/TT Users, if unable to call 911, call Relay  
Connecticut. .... 1-800-842-9710  
TDD/TT Users, if unable to call 911 or Relay  
Connecticut, call Connecticut State Police Direct Line ... 1-860-685-8386

### RELAY CONNECTICUT

Voice, TDD/TT Users ..... 711  
TDD/TT Users, if unable to call 711, call ..... 1-800-842-9710  
Voice Callers, if unable to call 711, call ..... 1-800-833-8134  
Relay Connecticut is available for calls between TDD/TT  
Users and Voice Callers who do not have TDD/TT equipment

### SIGN LANGUAGE INTERPRETER

Voice, TDD/TT Users, 8:30 to 5:00 Monday to Friday ... 1-800-708-6796  
Voice, TDD/TT Users emergency call ..... (860)-231-7623

### FOOD BANK

Wethersfield Social and Youth Services Department  
8:30 to 4:30 Monday to Friday ..... (860) -721-2977  
All other times call Police non-emergency number ..... (860)- 571-2900

### FUEL BANK

Wethersfield Social and Youth Services Department  
8:30 to 4:30 Monday to Friday ..... (860) 721-2977  
All other times call Police non-emergency number ..... (860) 571-2900

### MENTAL HEALTH OR SUBSTANCE ABUSE ISSUES NEEDING IMMEDIATE HELP

Inter-Community Mental Health Group (ICMHG) ..... (860) 895-3100

### CHILD/ADOLESCENT CRISIS

Wheeler Clinic-Emergency Mobile Service ..... 1-866-261-0893  
For any crisis involving children/youth ages birth to 17.

### HELPLINE (Statewide)

Wheeler Clinic ..... (860) 524-1182  
For persons needing support in a crisis or who need to talk.  
Offers telephone counseling, crisis and suicide intervention,  
information and referral.

**EMERGENCY ROOMS (Calling ahead is not required)**

Hartford Hospital ..... (860) 545-2515  
John Dempsey Hospital ..... (860) 679-2588  
New Britain General Hospital ..... (860) 224-5671  
St. Francis Hospital ..... (860) 714-4001

**DOMESTIC VIOLENCE**

Connecticut Coalition Against Domestic Violence ..... 1-888-774-2900

**PROTECTIVE SERVICES FOR ELDERLY (60 +)**

8:00 to 4:00 Monday to Friday ..... 1-888-385-4225

**TO REPORT CHILD ABUSE/NEGLECT** ..... 1-800-842-2288

**CT POISON CONTROL CENTER** ..... 1-800-222-1222

**SEXUAL ASSAULT CRISIS SERVICES (SACS Statewide)**

YMCA HOTLINE ..... 1-888-999-5545

**SUBSTANCE ABUSE DETOX TREATMENT**

Alcohol and Drug Recovery Centers (ADRC) ..... (860) 714-3700

Alliance Treatment Center ..... (860) 673-6115

Immediate assessment for inpatient substance abuse.

Detoxification for those with insurance.

Blue Hills Hospital ..... (860) 293-6400

Substance abuse detoxification

Substance Abuse Treatment & Enhancement (SATEP) ..... 1-800-563-4086

**SUICIDE**

Suicide INFOLINE ..... 211

Wheeler Clinic HELPLINE ..... (860) 524-1182

## **DEDICATION**

Thomas B. Lasher envisioned a world where people with disabilities would be free to live, work, play and learn alongside their non-disabled peers. He worked diligently to bring this world into reality, starting with his hometown of Wethersfield, Connecticut. This book was developed with Tom's vision in mind and is dedicated to him.

## **Acknowledgments**

This booklet could not have been produced without the dedicated effort of previous members of the Wethersfield Advisory Committee for People with Disabilities.

Work on this directory began in 1985, when Tom Lasher saw the need for a comprehensive resource book of Wethersfield services for persons with disabilities and prepared the first draft.

In 1988 a subcommittee of the Wethersfield Advisory Committee for People with Disabilities began updating the resource material presented in this directory.

In 2006 the Wethersfield Advisory Committee for People with Disabilities once again committed itself to updating the resource material presented in this directory. By providing this directory online, it is hoped that the contents will be easily accessed by all who are in need of current information.

## TABLE OF CONTENTS

INTRODUCTION.....	1
SECTION A .....	3
RESOURCES FOR INDEPENDENT LIVING .....	3
ADAPTIVE EQUIPMENT AND HOME MODIFICATION:.....	3
ORGANIZATIONS DEALING WITH DISABILITIES .....	7
DISABILITY RIGHTS ORGANIZATIONS .....	12
ADVOCACY .....	13
SECTION B .....	15
HOUSING.....	15
TRANSPORTATION .....	23
HEALTH.....	26
SAFETY.....	33
EMERGENCY INFORMATION.....	37
SECTION C .....	39
EDUCATION.....	39
EMPLOYMENT .....	42
RECREATION.....	45
PLACES OF WORSHIP.....	47
SECTION D.....	50
ENERGY ASSISTANCE .....	50
FOOD AND CLOTHING.....	53
FINANICAL AND LEGAL SERVICES.....	56
SECTION E.....	65
TOWN DEPARTMENTS.....	65
MISCELLANOUS INFORMATION.....	67

## INTRODUCTION

**This booklet should be used only as a guide** as it contains only brief descriptions of complex programs whose guidelines and eligibility levels are subject to change or program funding may be depleted. **It is important to check with the administering agency for current information.**

This guide has been prepared by the Wethersfield Advisory Committee for People with Disabilities (WACPD) as a public service to Town residents. An effort was made by the committee to provide accurate information. If a reader discovers errors in the guide, has a suggestion for inclusion in the guide or has some issues to raise with the information, please feel free to contact current committee members. A list of WACPD members can be obtained from The Town Manager's Office (860) 721-721-2801, or The Town Clerk's Office (860) 721-2880, or a list can be found on the Town Website <http://wethersfieldct.com/clerk/appointments.html> .

Over the years the Committee has been responsible for, or involved with, many projects and programs. Some of these are listed below:

- Conducted two town-wide surveys of the needs of residents with disabilities.
- Architectural barriers have been removed from public buildings, including public schools and the school administration building.
- All public recreational facilities have been made wheelchair accessible.
- Year-round Therapeutic Recreation is available for children ages 3-21, and for adults.
- Three lift-equipped vans and a lift-equipped mini-bus were obtained for transportation by the town.
- Developed a local handicapped parking ordinance which became the model for the State of Connecticut parking laws.
- Developed standards for transportation of special education students. These standards have since become the State Motor Vehicle Department regulations.
- Encouraged the private sector to build housing for people with disabilities.

- Co-sponsored a twelve-unit apartment complex for people with physical disabilities.
- Purchased two Telecommunication Devices for the Deaf (TDD/TT) for the town police and fire dispatchers and Town Hall. This enables people with hearing loss or deafness to call for emergency assistance and information.
- Purchased assistive listening equipment (an Induction Loop system) for the Council Chamber, Hanmer Elementary School, and the William J. Pitkin Recreational Center. Recommended the purchase of systems for the Middle and High Schools.
- All church sanctuaries are wheelchair accessible, and three have assisted listening systems.
- People who have adapted cars are exempt from paying local taxes on the vehicles. There is also property tax relief for people with disabilities.

The U.S. Census conducted in 2000 showed that Wethersfield had the following profile of civilian noninstitutionalized disability status.

Age	Percent Disability
5 to 20 years	6.5
21 to 64 years	12.5
65 years and older	31.1

Improved medical and rehabilitation technology is causing these percentages to increase. Therefore, it becomes more and more important to make buildings and services accessible to everyone.

We encourage you to take full advantage of the opportunities available in Wethersfield and to work at making our town supportive of people with disabilities.

**WETHERSFIELD**  
**A TOWN THAT SEEKS TO IMPROVE THE QUALITY OF**  
**LIFE FOR ALL ITS CITIZENS**



## **SECTION A**

### ***RESOURCES FOR INDEPENDENT LIVING***

#### **ADAPTIVE EQUIPMENT AND HOME MODIFICATION:**

##### **THE CORPORATION FOR INDEPENDENT LIVING (CIL)**

30 Jordan Lane  
Wethersfield, CT 06109  
Telephone: (860) 563-6011 (Voice, TDD/TT)

Offers low-interest loans to home-owners and renters who need to make their homes accessible. Advice on accessibility issues is also available.

#### **COMMUNICATION:**

##### **CONVERSE COMMUNICATION CENTER (CCC)**

34 Jerome Avenue, Suite 305  
Bloomfield, CT 06002  
Telephone: 1-800-743-1219  
Website: [www.conversecommunications.com](http://www.conversecommunications.com)

A message relay service which allows people who use TDD/TT (Telecommunication Devices for the Deaf) to communicate with hearing people over the telephone.  
The center also installs and maintains TDD/TT equipment.

##### **AT&T/SBC OFFICE FOR PERSONS WITH DISABILITIES**

Telephone: 1-800-922-4605 (Voice), 1-800-842-1514 (TDD/TT)

Certain disabled persons are exempt from charges for directory assistance if they fall within the limits of definitions set by AT&T/SBC. To find out if you are eligible for this exemption call AT&T/SBC.

##### **FAMILY SERVICES WORKING (FSW) TO STRENGTHEN OUR COMMUNITIES**

475 Clinton Ave.  
Bridgeport, CT 06605  
Telephone: 203 368-4291 (Voice, TDD/TT)  
Website: [www.fswinc.org](http://www.fswinc.org)

FSE's COMMUNITY SIGN LANGUAGE SERVICE (CSLS) provides sign language interpreter services to schools, universities, hospitals,

agencies, businesses and individuals throughout Connecticut.

COUNSELING SERVICES:

Counseling may be obtained from the following agencies:

WETHERSFIELD SOCIAL AND YOUTH SERVICES DEPARTMENT

Telephone: (860) 721-2977

Website: <http://wethersfieldct.com/social/service.htm>

Go to the website to obtain a comprehensive listing of offered services.

INDEPENDENCE UNLIMITED - Peer Counseling

Telephone: (860) 523-5021

UNITED CEREBRAL PALSY OF SERVICE IN THE NORTH EAST

Telephone: (860) 236-6201

HARTFORD EASTER SEAL REHAB CENTER

Telephone: (860) 714-9500

INDEPENDENT LIVING:

INDEPENDENCE UNLIMITED (IU)

151 New Park Avenue

Hartford, CT 06105

Telephone: (860) 523-5021

IU is the independent living center for the Hartford area. Run for people with disabilities by people with disabilities, IU offers classes on how to hire and supervise personal care attendants, home management, budgeting, relationships, sexuality, and more. Other services including transportation to and from IU, are also available.

THE NEW ENGLAND ASSISTIVE TECHNOLOGY (NEAT)

MARKETPLACE

120 Holcomb Street

Hartford, CT 06112

Telephone: (860) 243-2869 (Voice), 1-866-243-2869 (Voice), (860) 286-3113 (TDD/TT)

Website: [www.neatmarketplace.org](http://www.neatmarketplace.org)

NEAT Marketplace is a network of Microsoft Accessibility Resources Centers that shows what is possible with accessible technology solutions. Individuals who have disabilities are shown accessibility options and assistive technology products.

THE DEVELOPMENTAL DISABILITIES COUNCIL (DD)

Telephone: (860) 418-6160 or 1-800-653-1134

TTY (860) 418-6172

A governor-appointed body of people with disabilities or family members, and representatives of agencies which advocates for increased community integration and empowerment for people with disabilities. The DD Council offers brochures, videos, and conferences.

CONNECTICUT DEPARTMENT OF SOCIAL SERVICES (DSS)

HARTFORD REGIONAL OFFICE

3580 Main Street

Hartford, CT 06120

Telephone: (860) 723-1000

TDD/TT: (860) 566-7913

- **Personal Care Assistance:** Provides grants to people with disabilities for the purpose of retaining personal care assistants needed to enable the person to live and work..
- **Personal Care Assistance Medicaid Waiver:** Provides a home and community-based waiver for the purpose of paying for personal care assistance services under Medicaid

THE CONNECTICUTICUT PARTNERSHIP FOR LONG-TERM CARE

Department of Social Services

25 Sigourney Street

Hartford, CT 06106-5033

Telephone: 1-800-547-3443

Website: [www.CTpartnership.org](http://www.CTpartnership.org)

To help plan ahead for your long-term care needs, the State of Connecticut has joined forces with private insurance companies to form the Connecticut Partnership for Long Term Care. Working together, this public/private partnership has created an innovated program that offers you:

- Quality, affordable long-term care insurance; and
- A way to get the care you need without depleting all of your savings.

MONEY FOLLOWS THE PERSON PROGRAM  
Telephone: 1-866-864-2109

This program assists individuals 18 years of age and older who have been in a nursing home, rehabilitation facility, etc. for over 6 months to be able transition out of the care facility into the community. The program promotes the use of assistive technology and offers additional back-up to the care plan. For additional information call the above number.

NORTH CENTRAL AREA AGENCY ON AGING, INC  
BENEFITS OUTREACH/CHOICE PROGRAM  
Hartford Square West, Suite 101  
Hartford, CT 06106-5129  
Email: [contact@benefitscheckup.org](mailto:contact@benefitscheckup.org).  
Website: [www.benefitscheckup.org/link/ncaaa](http://www.benefitscheckup.org/link/ncaaa)

Many older adults struggle to pay for prescription drugs, health care, food, utilities and other services, but they are unaware of programs that can help them. Benefits CheckUp will see if you might be eligible for the following programs:

- Prescription Drug Assistance
- Health Care Programs
- Cash Assistance
- Housing Assistance
- Property Tax Program
- Home Energy Assistance
- In-home Supportive Services
- Legal Services
- Nutrition Programs and Food Stamps
- Employment Programs

PROJECT HOMESHARE/FAMILY HOMESHARE  
Newington Senior & Disabled Center  
120 Cedar Street  
Newington, CT 06111  
Telephone: (860) 665-8771

Project Homeshare matches up homeowners who need help with indoor or outdoor chores with persons in need of affordable housing.

CHORE SERVICES

VNA Health Care

Telephone: (860) 249-4862 (Voice) Homemaker Services (860) 522-8366

SUPPORT GROUPS

Infoline 211

***ORGANIZATIONS DEALING WITH DISABILITIES***

AMERICAN CANCER SOCIETY

North Unit

Telephone: (860) 643-2168 (Voice) or 1-800-ACS-2345

The American Cancer Society provides:

- Information and Guidelines
- Patient aid which includes:
  - Transportation to and from treatment center
  - Medical equipment loan
  - Financial Aid
- Rehabilitation Services
- Educational and Support Programs

CANCER INFORMATION SERVICE

55 Church Street

New Haven, CT 06510

Telephone: 1-800-422-6237 (Voice)

Accurate answers that you can understand about cancer prevention, detection and treatment. Counseling and emotional support, referrals to physicians and free publications about cancer are some of the services provided. Counselors are available from 8:30 a.m. to 4:30 p.m. Monday through Friday.

AMERICAN HEART ASSOCIATION - Connecticut Affiliate, Inc.

5 Brookside Drive

Wallingford, CT 06492

Telephone: 1-800-242-8721 (Voice) or (203) 294-0088

Provides literature, videos and programs for heart disease and stroke.

AMERICAN RED CROSS - Greater Hartford Chapter

209 Farmington Avenue  
Farmington, CT 06032  
Telephone: (860) 678-2700 (Voice)

This chapter is the "blood center" for the State of Connecticut. The chapter also offers health and safety related courses and information on CPR, first aid, water and boating safety, baby sitting, AIDS education and volunteer work.

THE ARTHRITIS FOUNDATION- Southern New England Chapter

35 Cold Spring  
Rocky Hill, CT 06067  
Telephone: (860) 563-1177 (Voice) 1-800-541-8350 (Voice)

Provides education, information and support services to people with arthritis, their families and the community.

COMMISSION ON THE DEAF AND HEARING IMPAIRED (CDHI)

67 Prospect Avenue, 3<sup>rd</sup> Floor  
Hartford, CT 06106-2980  
Telephone: (860) 231-7623 (Voice, TDD/TT), 1-800-708-6796 (Voice, TDD/TT),

Provides interpreting services, job counseling and placement, personal and family counseling, education, research and advocacy.

263 Farmington Avenue, MC 6222

CONNECTICUT DOWN SYNDROME CONGRESS

c/o UConn  
Farmington, CT 06030  
Telephone: 888 486 8537 (Voice)  
Website: <http://www.ctdownsyndrome.org>  
Email: [manger@ctdownsyndrome.org](mailto:manger@ctdownsyndrome.org)

An organization of families, friends, and professionals from every county in the state. All share a common interest in improving the lives of persons with Down Syndrome. The Connecticut Congress is affiliated with the National Down Syndrome Congress.

BRAIN INJURY ASSOCIATION OF CONNECTICUT (BIAC)

333 East River Drive  
Suite 106  
East Hartford, CT 06108  
Telephone: (860) 721- 8111, 1-800 278-8242  
Fax: (860) 721-9008  
Website: [www.biact.org](http://www.biact.org)

Provides case consultation, referral services, advocacy, computer assisted rehabilitation, social recreation, and support groups.

DISABLED AMERICAN VETERANS VA MEDICAL CENTER

555 Willard Avenue  
Newington, CT 06111  
Mailing Address: P.O. Box 310909, Newington Connecticut, 06101-0909  
Telephone: (860)-594 6612  
Fax: (860) 667-1238  
Website: [www.dav.org](http://www.dav.org)

The agency provides liaison between veterans and the Veterans Administration. The agency also provides counseling and representation before the Veterans Administration and Social Security Administration.

THE HARTFORD ASSOCIATION FOR RETARDED CITIZENS (HARC)

900 Asylum Street  
Hartford, CT 06114  
Telephone: (860) 278-4272 (Voice)

The association offers a variety of services including education, vocational, group homes, advocacy, recreation programs, a parent support group, and a life-enrichment program for elderly persons with mental retardation.

GREATER HARTFORD EASTER SEAL REHABILITATION CENTER, INC.  
(REHAB CENTER)

100 Deerfield Road  
Windsor, CT  
Telephone: (860) 741-9500 (Voice)

The center offers medical rehabilitation and vocational services for children and adults with physical, mental, emotional and/or learning disabilities. The Center also offers three traumatic brain injury treatment programs.

MUSCULAR DYSTROPHY ASSOCIATION

148 Eastern Blvd  
Glastonbury, CT 06033-4325  
Telephone (860) 633-4466  
Website: [www.mdausa.org](http://www.mdausa.org)

Provides clinics, equipment and services to children and adults with neuromuscular disorders. Also funds research.

NATIONAL FEDERATION OF THE BLIND (CONNECTICUT)

477 Connecticut Boulevard  
Suite 217  
East Hartford, CT 06108  
Telephone: (860) 289-1971  
Website: [www.nfb.org](http://www.nfb.org)

NATIONAL MULTIPLE SCLEROSIS SOCIETY CONNECTICUT CHAPTER

659 Tower Avenue  
1<sup>st</sup> floor  
Hartford, CT 06112  
Telephone: (860) 714-2300  
Fax: (860) 714-2301  
Email: [info@ctfightsms.org](mailto:info@ctfightsms.org)

Offers the following: literature, monthly newsletter, equipment loan, information and referral, support groups, social events, and financial assistance for respite care.

STATE OF CONNECTICUT BOARD OF EDUCATION AND SERVICES FOR THE BLIND (BESB)

184 Windsor Avenue  
Windsor, CT 06095  
Telephone: 1-800-842-4510 (Voice/TTY)  
Email: [besb@po.state.ct.us](mailto:besb@po.state.ct.us)  
Website: [www.besb.state.ct.us](http://www.besb.state.ct.us)

Offers counseling, referral, education from preschool to high school, vocational rehabilitation, orientation and mobility instruction, vending facilities, industries and sales, consultation and public education.



LIBRARY FOR THE BLIND & PHYSICALLY HANDICAPPED

Connecticut State Library  
198 West Street  
Rocky Hill, CT 06067  
Telephone: (860) 721-2020, 1-800-842-4516  
Website: [www.cslib.org/lbph.htm](http://www.cslib.org/lbph.htm)  
Email: [ldph@cslib.org](mailto:ldph@cslib.org)

The Library is a network library of the National Library Service for the Blind and Physically Handicapped, Library of Congress. The Library provides free mail loan of recorded and Braille books and magazines and necessary playback equipment to eligible state residents unable to read conventional print because of a visual or physical disability. Recorded materials are provided by the National Library Service. The NLS Catalog lists these titles. Additional materials of interest to Connecticut readers are recorded by the Connecticut Volunteer Services for the Blind and Physically Handicapped. Catalogs of these recordings are available from the Library for the Blind and Physically Handicapped.

CONNECTICUT RADIO INFORMATION SYSTEM (CRIS)

184 Windsor Avenue  
Suite C  
Windsor, CT 06095-4536  
Telephone: (860) 527-8000, 1-800-708-0004  
Fax: (860) 727-9581  
Email: [crisradio@snet.net](mailto:crisradio@snet.net)

CRIS provides radio broadcasts of readings from up-to-date local and national newspapers, current magazines and books 24 hours a day. Listeners may be visually, physically, and mentally or learning disabled so that they cannot read conventional printed information. CRIS radios are provided at no charge, to be kept as long as needed. Listeners can also receive CRIS over a special cable TV hook-up or on a touch-tone telephone.

UNITED CEREBRAL PALSY OF GREATER HARTFORD (UCP)

80 Whitney Street  
Hartford CT 06105  
Telephone: (860) 236-6201 (Voice)

Provides transportation, social service and counseling, vocational services, recreation, competitive sports, and respite care. Activities are open to all people with physical disabilities, not exclusively those with Cerebral Palsy.

## ***DISABILITY RIGHTS ORGANIZATIONS***

### ADAPT OF CONNECTICUT, INC.

c/o Independence Unlimited

60 Weston Street

Hartford, CT 06105

Telephone: (860) 524-9073 (Voice), (860) 549-3915 (TDD/TT)

Works to make transportation accessible to all people, promotes accessibility in housing, restaurants, and stores.

### THE ARC OF CONNECTICUT

43 Woodland Street

Suite 269

West Hartford, CT 06105

Telephone: (860) 246-6400

Fax: (860) 246-6406

Email: arcct@aol.com

Website: [www.arcct.com](http://www.arcct.com)

Private, nonprofit advocacy organization committed to protecting the rights of people with mental retardation and related developmental disabilities and increasing opportunities for full inclusion in community life.

### THE CONNECTICUT UNION OF DISABILITY ACTION GROUPS (CUDAG)

1155 Silas Deane Highway

Wethersfield, CT 06109

Telephone: (860) 297-4381

A statewide organization providing a network to local grass-roots organizations to work on issues affecting people with disabilities.

### THE DEVELOPMENTAL DISABILITIES COUNCIL (DD)

Telephone: (860) 418-6160 or 1-800-653-1134

TTY (860) 418-6172

A governor-appointed body of people with disabilities or family members, and representatives of agencies which advocates for increased community integration and empowerment for people with disabilities. The DD Council offers brochures, videos, and conferences.

## **ADVOCACY**

### THE OFFICE OF PROTECTION AND ADVOCACY (P&A) FOR PERSONS WITH DISABILITIES

60-B Weston Street

Hartford, CT 06120-1551

Telephone: (860) 297-4300 (Voice) 566-2102 (TDD/TT) 1-800-842-7303 (Voice, TDD/TT) outside greater Hartford area

Website: [www.state.ct.us/opapd](http://www.state.ct.us/opapd)

This independent state agency provides information about disability issues. P & A's functions include:

- Advocacy for people who have been discriminated against because of a disability;
- Help for parents whose children are having special education problems; Information and referral service; Investigation of alleged abuse of adults with mental retardation;
- Outreach to minority communities in Hartford, New Britain and New Haven;
- Recruitment of citizen advocates for people from Mansfield Training School and Fairfield Hills Hospital;
- Assistance to people who are having problems with the vocational rehabilitation system;
- Legal assistance where needed.

### COMMISSION ON HUMAN RIGHTS AND OPPORTUNITIES (CHRO)

Capital Region

999 Asylum Avenue

Hartford, CT 06105

Telephone: (860) 566-7710 (Voice, TDD/TT)

Receives and investigates complaints of alleged discrimination in employment, housing, public accommodations, and credit transactions because of race, religious creed, color, national origin, ancestry, sex, sexual orientation, age, marital status or disability. Complaints must be filed within 180 days of the alleged act of discrimination.

PERMANENT COMMISSION ON THE STATUS OF WOMEN

18-20 Trinity Street

Hartford CT 06106

Telephone: (860) 240-8300 (Voice)

Website: [www.cga.ct.gov/PCSW](http://www.cga.ct.gov/PCSW)

Email: [pcsw@cga.ct.gov](mailto:pcsw@cga.ct.gov)

The Commission was established by the State Legislature to eliminate sex discrimination in Connecticut. The Commission is to inform leaders about the nature and scope of discrimination, to serve as a liaison between government and private interest groups concerned with services for women, to promote consideration of women for governmental positions, and to work with state agencies to access programs and practices as they affect women.

## SECTION B

### ***HOUSING***

#### CITY OF HARTFORD HOUSING PROGRAMS

250 Constitution Plaza  
Hartford, CT 06103  
Telephone: (860) 757-9005 (Voice)  
Website: [www.hartford.gov/housing](http://www.hartford.gov/housing)

#### CONNECTICUT HOUSING FINANCE AUTHORITY (CHFA)

999 West Street  
Rocky Hill, CT 06067  
Telephone: (860) 721-9501 (Voice) CT 1-800-533-9208 (Voice)  
Website: [www.CHFA.org](http://www.CHFA.org)  
Email: [info@CHFA.org](mailto:info@CHFA.org)

Assists and encourages the purchase of existing, rehabilitated, or newly constructed housing for low and moderate income families through below-market-rate mortgages.

#### CONNECTICUT HOUSING INVESTMENT FUND (CHIF)

121 Tremont Street  
Hartford, CT 06105  
Telephone: (860) 233-5165 (Voice) 1-800-992-3665 (Voice)  
Fax: (860) 920-2038  
Email: [info@CHIF.org](mailto:info@CHIF.org)

A non-profit housing agency dedicated to expanding opportunities for home ownership through seminars for people who wish to build their own homes, energy conservation loans, and consulting services.

#### CO-OP INITIATIVES, INC.

20-28 Sargeant Street, Suite 102  
Hartford, CT 06105  
Telephone: (860) 724-4940 (Voice)  
Fax: (860) 724-7102  
Email: [info@coopinit.org](mailto:info@coopinit.org)

Works to promote the inclusion of people with disabilities in housing cooperatives through advocacy and housing cooperative development.

INFOLINE-HOUSING RESOURCES

Telephone: 211 (Voice, TDD/TT)

Website: [www.infoline.org](http://www.infoline.org)

Infoline is a public/private partnership between the State of Connecticut and Connecticut United Way, that serves as a single source for information about community services. The website under its Housing Resources link lists programs and resources on affordable housing for the State of Connecticut. The listing includes programs and sites for people with disabilities.

MUTUAL HOUSING ASSOCIATION OF GREATER HARTFORD (MHAGH)

864 Wethersfield Ave.

Hartford, CT 06114

Telephone: (860) 296-1797 (Voice)

Fax: (860) 947-3254

Mutual housing is permanent, affordable housing that you can live in all your life and even pass on to your children. Resident participation in how the property is run and the opportunity to build community and revitalize the neighborhood are key elements of mutual housing.

HOUSING EDUCATION RESOURCE CENTER

901 Wethersfield Avenue

Hartford, CT 06114

Telephone: (860) 296-4242 (Voice) HOUSING HOTLINE: (860) 296-4372 (Voice) - direct line to housing counselors Tuesday and Friday only 9:00 am-5:00 pm.

The Housing Education Resource Center provides a wide range of housing services with an emphasis on education and counseling. Among the issues the Center deals with are discrimination, rent increase, landlord-tenant relations, and condo conversion. The Center provides eviction counseling and pre-purchase counseling, and keeps a list of subsidized housing which is available to the public.

DISABLED AND ELDERLY RENTAL HOUSINGEXECUTIVE SQUARE HOUSING

100 Executive Square

Wethersfield, CT 06109

Telephone: (860) 529-7595 (Voice)

Executive Square Housing functions under Federal Control with Section 8 Mandates. The facility consists of 240 units of which 20 are accessible units.

FIRST CHURCH VILLAGE

117 Wells Road  
Wethersfield, CT 06109  
Telephone: (860) 257-9049 (Voice)

75 units, 8 accessible units.

LASHER COURT

333 Maple Street  
Wethersfield, CT 06109  
Telephone: (860) 529-7205 (Voice), (860) 721-9166 (TDD/TT)

Housing for persons with disabilities. Twelve- one bedroom units all accessible.

MITCHELL ON THE PARK

226 Prospect Street  
Wethersfield, CT 06109  
Rental agent: Intertown Realty Company  
Telephone: (860) 233-6281 (Voice)

Non-subsidized housing.  
71 units, 2 accessible units.

AHEPA NATIONAL HOUSING CORPORATION, NATHAN HALE SENIOR CENTER

1532 Berlin Turnpike  
Wethersfield, CT 06109  
Telephone: (860) 956-6474 (Voice)  
Website: [www.ahepahousing.org](http://www.ahepahousing.org)  
Email: [info@ahepahousing.org](mailto:info@ahepahousing.org)

83 units, 4 accessible units.

U.S. DEPARTMENT OF HOUSING AND URBAN DEVELOPMENT (HUD)

One Corporate Center  
20 Church Street  
Hartford, CT 06103  
Telephone: (860) 240-4800 ext. 3100  
Fax: (860) 240-4850  
Website: [www.hud.gov](http://www.hud.gov)

WETHERSFIELD HOUSING AUTHORITY

60 Lancaster Road  
Wethersfield, CT 06109  
Telephone: (860) 529-2267 (Voice)  
Fax: (860) 721-6626

Presently there are three facilities:

Adams Apartments  
55 Lancaster Road  
31 efficiency units - no wheelchair accessible units.

James Devlin Court  
60 Lancaster Road  
50 units - 6 wheelchair accessible units.

Harvey C. Fuller Housing  
31 Butler Street  
32 units - 3 wheelchair accessible units.

OTHER HOUSING OPTIONS

GROUP HOMES

ALTERNATIVE SERVICES, INC

- 171 Ridgecrest Circle  
Wethersfield, CT 06109  
Telephone: (860) 537-4697

BETHPHAGE/MOSAIC

- 136 Meadowgate Street  
Wethersfield, CT 06109  
Telephone: (860) 632-2814

CONNECTICUT DEPARTMENT OF DEVELOPMENTAL SERVICES (DDS)

- 1021, 1069 Maple Street  
Rocky Hill, CT 06067  
Telephone: (860) 456-6315

CONNECTICUT INSTITUTE FOR THE BLIND (CIB)

- 102, 103 Briarwood Circle  
Rocky Hill, CT 06067  
Telephone: (860) 769-3822



- 210 Hayes Road  
Rocky Hill, CT 06067  
Telephone: (860) 769-3822
- 765 Prospect Street  
Wethersfield, CT 06109  
Telephone: (860) 769-3822
- 47 Village Lane  
Wethersfield, CT 06109  
Telephone: (860) 769-3822

HARTFORD ASSOCIATION FOR RETARDED CITIZENS (HARC)

- 44, 60, 62 Little Oak Road  
Rocky Hill, CT 06067  
Telephone: (860) 278-1100
- 50 Eastern Drive  
Wethersfield, CT 06109  
Telephone: (860) 278-1100

RESIDENTIAL MANAGEMENT SERVICE (RMS) DEVELOPMENT, INC

- 63 Coppermill Road  
Wethersfield, CT 06109  
Telephone: (860) 828-8635
- 385 Maple Street  
Wethersfield, CT 06109  
Telephone: (860) 828-8635
- 5 Parkview/Gooseberry  
Wethersfield, CT 06109  
Telephone: (860) 828-8635
- 135 Two Stone Road  
Wethersfield, CT 06109  
Telephone: (860) 828-8635

## INTERMEDIATE HOUSING

### AVERY HEIGHTS

705 New Britain Avenue

Hartford, CT 06106

Telephone: (860) 527-9126 (Voice) Fax: 860-525-2090

Website: [www.averyheights.org](http://www.averyheights.org)

Avery Heights Village provides a full range of residential living and care options, including adult day care, intermediate care and skilled nursing care for adults 62 years and older.

### NEW HORIZONS VILLAGE

37 Bliss Memorial Road

Unionville, CT 06085

Telephone: (860) 673-8893 (Voice)

Website: [www.NewHorizonsVillage.com](http://www.NewHorizonsVillage.com)

New Horizons Village located in Unionville, is one option for people with severe disabilities. One and two bedroom units, sports and therapy facilities, and five lift-equipped vans. Community college nearby.

### MCLEAN HOME VILLAGE

75 Great Pond Road

Simsbury, CT 06070

Telephone: (860) 658-3700 (Voice) Fax: 651-1247

Fully accessible, one, two and three bedroom apartments and cottages on the grounds of the McLean Home. Village residents can participate in all activities and facilities offered by the home, including gift shop, beauty shop, and weekly van trips for shopping.

## NURSING HOMES AND CONVALESCENT CARE

### HAVEN HEALTH CENTER OF CROMWELL

385 Main Street

Cromwell, CT 06416

Telephone: (860) 635-5613 (Voice)

Intermediate care facility and skilled nursing.

ELM HILL NURSING CENTER

45 Elm Street  
Rocky Hill, CT 06067  
Telephone: (860) 529-8661 (Voice)

Intermediate care facility and skilled nursing.

JEFFERSON HOUSE

1 John Stewart Drive  
Newington, CT 06111  
Telephone: (860) 667-4453 (Voice)  
Fax: (860) 840-1584

Jefferson House, affiliated with Hartford Hospital, is an intermediate care facility providing skilled nursing services.

MAPLE VIEW MANOR

856 Maple Street  
Rocky Hill, CT 06067  
Telephone: (860) 563-2861 (Voice)

Intermediate care facility and skilled nursing.

NEWINGTON HEALTHCARE

240 Church Street  
Newington, CT 06111  
Telephone: (860) 667-2256 (Voice)

Intermediate care facility and skilled nursing.

WETHERSFIELD HEALTHCARE

341 Jordan Lane  
Wethersfield, CT 06109  
Telephone: (860) 563-0101 (Voice)

Intermediate care facility and skilled nursing.

HAVEN HEALTH CENTER OF ROCKY HILL

60 West Street  
Rocky Hill, CT 06067  
Telephone: (860) 529-2521 (Voice)

Skilled nursing only

ELLIS MANOR  
210 George Street  
Hartford, CT 06114  
Telephone: (860) 296-9166

Skilled Nursing and rehabilitation services

HOUSING REHABILITATION

WETHERSFIELD HOUSING REHABILITATION LOAN PROGRAM

Town Manger's Office  
Town of Wethersfield  
505 Silas Deane Highway  
Wethersfield, CT 06109  
Telephone: (860) 721-2801

or

L. Wagner & Associates  
51 Lakeside Boulevard East  
Waterbury, CT 06708  
Telephone: (203) 573-1188

The program provides low interest loans to upgrade housing, to correct health and safety violations for residents of Wethersfield. Assistance is available for owner occupants and for non-occupant owners. For eligible requirements please contact the above telephone numbers.

CONNECTICUT HOTLINE FOR FURNACE REBATES

Telephone: 1-866-940-4676

The program provides Connecticut families with household incomes up to \$100,000 a \$500 rebate towards the purchase of a new, energy efficient furnace or boiler for their home. Families earning up to \$200,000 may be eligible for smaller rebates. For application materials contact the above telephone number.

CONNECTICUT ENERGY EFFICIENCY FUND

Telephone: (860) 832-4954

A new Connecticut law, designed to promote energy efficiency, establishes a rebate program for residential customer who replace room air conditioners or replace central air conditioning units that do not meet federal Energy Star efficiency standards with ones that do. Call the above number for additional information.

## ***TRANSPORTATION***

### WETHERSFIELD DIAL-A-RIDE TRANSPORTATION SERVICE

Social and Youth Services Department

505 Silas Deane Highway

Wethersfield, CT 06109

Telephone: (860) 721-2977 for information on eligibility and for an application.

Website: <http://wethersfieldct.com/social/DAR.html>

Services are provided for residents of Wethersfield 60 years or older or with temporary or permanent disabilities. To obtain an application for the service, call (860) 721-2977. Once registered, reservations should be made at least two days ahead. The phone number for reservations is: 1-888-737-0825. There is an annual fee and it is due each year on July 1st. A check or money order can be made out to the Town of Wethersfield and returned with the application. To obtain the most current schedule call (860) 721-2977.

Please note: If you are a Medicaid recipient you should use First Transit for your medical appointments. Their telephone number is 1-888-743-3112.

### CONNECTICUT TRANSIT

Customer Service Center,

100 Leibert Road

P.O. Box 66

Hartford, CT 06141- 0066

Telephone: (860) 525-9181; TTY: (860) 727-8196

Website: [www.cttransit.com](http://www.cttransit.com)

The Connecticut Transit Bus is lift equipped and available to individuals who are ambulatory or in a wheelchair. (standard or electric)

With a Medicare Card (proof of disability) or Connecticut Transit reduced fare card, cost of fare is 60 cents (discounted half fare at any time of day and exact change is needed). A 10 ride card good for ten one-way rides is also available. If a person is in an electric wheelchair (3 or 4 wheels) one must have a Medicare Card/pass and a wheelchair permit card. To obtain this permit one must arrange a field test with the bus company. Any attendant accompanying the person with disability rides for free of charge.

GREATER HARTFORD TRANSIT TRANSPORTATION SERVICE

Transportation Under Americans with Disabilities Act (ADA)

One Union Place,

Hartford, CT 06103

Telephone: (860) 247-5329

Website: [www.hartfordtransit.org](http://www.hartfordtransit.org)

ADA Paratransit services are provided for individuals who, because of their disability, are unable to travel by a public city bus (CT Transit). ADA Paratransit operates during the same hours as the public city bus (CT Transit) service fixed-routes. This includes Hartford, West Hartford, East Hartford, Manchester and Wethersfield and portions of Newington, Rocky Hill, Glastonbury, Vernon, Tolland, Ellington, South Windsor, Windsor, Windsor Locks, Bloomfield and Farmington.

Call for an ADA application which must be completed along with a short face to face interview and transportation will be provided free of charge to this appointment. This is a door to door service.

INDEPENDENT TRANSPORTATION NETWORK (ITN)

Wethersfield Social and Youth Services Department

Telephone: (860) 721-2977

ITN is a transportation service with rides available for any purpose 24 hours a day for people 60 years and older and visually impaired adults. You sign up for an annual membership and set up a pre-paid personal transportation account. There is no need to carry cash or tip drivers. You pay approximately half the true cost of each ride. ITN's community fund-raising efforts make up the difference to keep rides affordable. For further information on cost and availability call the above telephone number.

STATE OF CONNECTICUT-TRANSPORTATION SERVICE / FIRST TRANSIT

Department of Social Services client through the State may be eligible for medical transportation and must call 1-888-743-3112 to inquire regarding eligibility requirements.

Once the client is eligible they must call several days ahead of time to make reservations for the ride and have their State client I.D. number available.

### VETERAN TRANSPORTATION SERVICE

Veterans must have signed up for a medical card at the Federal VA Hospital to benefit from the transportation service to and from the VA Facilities. The VA main number is: (860) 666-6951. In Newington the travel/motor service number is (860) 667-6769. Call the travel/motor service number in advance for your VA medical appointment.

### DISABLED COMMUTERS HANDBOOK

c/o Rideshare Co.  
100 Corporate Drive  
Suite 120  
Windsor, CT 06095-2119  
Telephone: (860) 692-1260

This handbook has a listing of transportation services available including transportation providers equipped to accommodate the disabled. Also, contains useful information about car-pools, van-pools, bus-pools, fares, driver training, etc. Telephone Rideshare for a copy.

### STATE OF CONNECTICUT DEPARTMENT OF MOTOR VEHICLE (DMV)

Telephone: (860) 263-5700 Within Hartford area and outside Connecticut, 1-800 842-8222 elsewhere in Connecticut.  
Website: [www.ct.gov/dmv](http://www.ct.gov/dmv)

Call or go to the website for a handicapped parking permit application.

If you cannot see or walk and have impairments in this area, your doctor must certify your disability or medical condition. For permanent handicap, your medical doctor, chiropractor or eye doctor can fill out the DMV forms for this permit. If you have a temporary disability, use crutches or a wheelchair, again, your doctor must certify the temporary disability and your permit expires in six months. You may ask for another six month extension, ask for form B-225.

Anyone holding a valid Handicap Parking Permit and has a vehicle registered in their name, may apply for this plate. Applications are available at all Motor Vehicle Department offices

### ALTERNATIVE TRANSPORTATION TO HIRE

Some agencies and ambulances can provide transportation services. Contact the Wethersfield Social and Youth Services Department (860) 721-2977 for the list.

TAXICAB SERVICE

See local listings and phone numbers in the yellow pages or use operator assistance on your cell phone.

INDEPENDENCE UNLIMITED

This agency does not have transportation services but you may call (860) 523-5021 for information.

**HEALTH**

HEALTH SERVICES

CENTRAL CONNECTICUT HEALTH DISTRICT

505 Silas Deane Highway  
Wethersfield, CT 06109  
Telephone: (860) 721-2822  
Fax: (860) 721-2823  
Website: [www.ccthd.org](http://www.ccthd.org)

Service is provided to residents of Wethersfield, Newington, Rocky Hill and Berlin.

ConnPACE Program (Prescription drug assistance)

Social Services- State of Connecticut  
25 Sigourney Street  
Hartford, CT 06106  
Telephone: 1-800-423-5026 (Voice)  
Website: [www.connpace.com](http://www.connpace.com)

Pays the cost of prescription drugs after a co-payment, for persons who are 18 and over and disabled under Social Security. Call for information on eligibility requirements.

MEDICARE PART D PRESCRIPTION PROGRAM

Telephone: 1-800-MEDICARE (24 hours a day, 7 days a week)  
Websites: [www.medicare.gov/pdphome.asp](http://www.medicare.gov/pdphome.asp) , [www.ct.gov/medicarerx](http://www.ct.gov/medicarerx)

Detailed program information is available at the above websites or call the above telephone number for live help. Help is also available from the Wethersfield Social and Youth Services Department (860) 721-2977.



CONNECTICUT PARTNERSHIP FOR LONG TERM CARE

Office of Policy and Management  
450 Capital Ave  
MS # 52LTC  
Hartford, CT 06106  
Telephone: (860) 418-6318  
Website: [www.opm.state.ct.us/pd4/lc/general.htm](http://www.opm.state.ct.us/pd4/lc/general.htm)

Under the Connecticut Partnership, private insurance companies competitively sell special long-term care insurance policies. These policies not only offer benefits to pay for long-term care costs, they also offer Medicaid Asset Protection should you ever need to apply to Connecticut's Medicaid Program for assistance.

WETHERSFIELD VOLUNTEER AMBULANCE ASSOCIATION

206 Prospect Street  
Wethersfield, CT 06109  
Telephone 911 for emergency service, (860) 529-8022 (answering service) for non-emergency private services.  
Email: [info@wethersfieldambulance.org](mailto:info@wethersfieldambulance.org)

Provides free emergency ambulance services to Wethersfield residents during evening hours and on weekends.

WETHERSFIELD / ROCKY HILL NURSE'S ASSOCIATION (LOAN CLOSET)

Telephone: (860) 721-2977

The Association maintains a medical equipment loan closet to assist in the care and management of physical needs. For further information, contact Wethersfield Social and Youth Services at the above telephone number.

HOSPITALS – GENERAL

CONNECTICUT CHILDREN'S MEDICAL CENTER

282 Washington Street  
Hartford, CT 06106  
Telephone: (860) 545-9000  
Website: [www.ccmckids.org](http://www.ccmckids.org)

HARTFORD HOSPITAL

80 Seymour Street  
Hartford, CT 06102  
Telephone: (860) 545-5555 (Voice)  
Website: [www.harthosp.org](http://www.harthosp.org)

MANCHESTER MEMORIAL HOSPITAL

71 Haynes Street  
Manchester, CT 06040  
Telephone: (860) 533-3400  
Website: [www.echn.org](http://www.echn.org)

MIDDLESEX HOSPITAL

28 Crescent Street  
Middletown, CT 06457  
Telephone: (860) 344-6000 (Voice)  
Website: [www.middlesexhealth.org](http://www.middlesexhealth.org)

THE HOSPITAL OF CENTRAL CONNECTICUT

Website: [www.thocc.org](http://www.thocc.org)

The facility is an acute-care hospital with campuses in New Britain and Southington.

New Britain General Campus:

100 Grand Street  
New Britain, CT 06050  
Telephone: (860) 224-5011, (860) 225-6244

Bradley Memorial Campus:

81 Meriden Avenue  
Southington, CT 06489  
Telephone: (860) 276-5000 or (860) 276-5055

SAINT FRANCIS HOSPITAL AND MEDICAL CENTER

114 Woodland Street  
Hartford, CT 06105  
Telephone: (860) 714-4000  
Website: [www.stfranciscare.org](http://www.stfranciscare.org)

UNIVERSITY OF CONNECTICUT HEALTH CENTER

263 Farmington Avenue  
Farmington, CT 06032  
Telephone: (860) 679-2000 (Voice); TTY: (860) 679-2242  
Website: [www.uchc.edu](http://www.uchc.edu)

HOSPITALS - REHAB

GAYLORD HOSPITAL

P.O- Box 400  
Gaylord Farms Road  
Wallingford, CT 06492  
Telephone: 1-866-GAYLORD (Voice)  
Website: [www.gaylord.org](http://www.gaylord.org)

HOSPITAL FOR SPECIAL CARE

2150 Corbin Avenue  
New Britain, CT 06053  
Telephone: (860) 223-2761  
Website: [www.hfsc.org](http://www.hfsc.org)

MOUNT SINAI REHABILITATION HOSPITAL

490 Blue Hills Avenue  
Hartford, CT 06112  
Telephone: (860) 714-3500, 1-800-789-7709  
Website: [www.rehabct.com](http://www.rehabct.com)

HOSPITALS – PSYCHIATRIC

CAPITOL REGION MENTAL HEALTH CENTER

500 Vine Street  
Hartford, CT 06112  
Telephone: (860) 297-0800  
Website: [www.dmhas.state.ct.us](http://www.dmhas.state.ct.us)

CEDAR CREST HOSPITAL

525 Russell Road  
Newington, CT 06111  
Telephone: (860) 666-7650 (Voice)

CONNECTICUT VALLEY HOSPITAL

P.O. Box 351  
Eastern Drive  
Middletown, CT 06457  
Telephone: (860) 262-5000, (860) 262-6321 or (860) 262-6320

INSTITUTE OF LIVING

400 Washington Street  
Hartford, CT 06106  
Telephone: (860) 241-8000 (Voice/TDD)  
Website: [www.instituteofliving.org](http://www.instituteofliving.org)

HOSPITALS – VETERANS

VETERANS ADMINISTRATION MEDICAL CENTER (Federal)  
555 Willard Avenue  
Newington, CT 06111  
Telephone: (860) 666-6951 (Voice)  
Website: [www.connecticut.va.gov](http://www.connecticut.va.gov)

STATE OF CONNECTICUT DEPARTMENT OF VETERANS' AFFAIRS

Veterans' Home and Hospital  
287 West Street  
Rocky Hill, CT 06067  
Telephone: (860) 529-2571 (Voice)

MENTAL HEALTH, SUBSTANCE ABUSE AND SUPPORT SERVICES

WETHERSFIELD SOCIAL AND YOUTH SERVICES DEPARTMENT  
505 Silas Deane Highway  
Wethersfield, CT 06109  
Telephone: (860) 721-2977

The department provides referrals for mental health services.

THE NATIONAL ALLIANCE FOR THE MENTALLY ILL (NAMI-CT)  
30 Jordan Lane  
Third Floor  
Wethersfield, CT 06109  
Telephone: (860) 883-0236, 1-800-215-3021  
Fax: (860) 882-0240  
Email: [namicted@aol.com](mailto:namicted@aol.com)  
Website: [www.namict.org](http://www.namict.org)

NAMI-CT is a non-profit, volunteer organization of families and friends of people with prolonged mental illness. This organization provides support, self-help and advocacy groups to its members, as well as public information and advocacy for better services and treatment.

MENTAL HEALTH ASSOCIATION OF CONNECTICUT  
20-30 Beaver Road  
Wethersfield, CT 06109  
Telephone: (860) 529-1970, ext. 10, 1-800-842-1501  
Fax: (860) 529-6833  
Email: [mntlhlth@tiac.net](mailto:mntlhlth@tiac.net)  
Website: [www.mhact.org](http://www.mhact.org)

The Mental Health Association of Connecticut is a private, nonprofit organization providing advocacy, educational programs and direct services to promote mental health, prevent mental illness, and improve care and treatment of persons with mental illness. Services include programs for schools on mental health issues and co-occurring disorders, referral to private practitioners, mental health literature, psychosocial rehabilitation center, supported employment, housing programs, and support groups.

WHEELER CLINIC

91 Northwest Drive  
Plainville, CT 06062  
Telephone: 1-888-793-3500

Wheeler Clinic is a provider of behavioral health services for children, adolescents, adults and families that include mental health, substance abuse, special education, early childhood development, prevention, an employee assistance program (EAP) and community education

INTER-COMMUNITY MENTAL HEALTH GROUP

281 Main Street  
East Hartford, CT 06118  
Telephone: (860) 895-3015  
Website: [icmhg.org](http://icmhg.org)

Inter-Community Mental Health Group is a community-based provider of comprehensive mental health and co-occurring addiction disorder services. The group believes in access to needed services for all. No one is turned away because of lack of finances.

DEPARTMENT OF CHILDREN & FAMILIES (DCF)

1 Grove Street  
New Britain, CT 06053  
Telephone: (860) 550-6527  
Website: [www.state.ct.us/dcf](http://www.state.ct.us/dcf)

DCF is a State Agency that provides a extensive range of social services for children and families.

ALCOHOL & DRUG RECOVERY CENTERS (ADRC)

16 Coventry Street  
Hartford CT 06112  
Telephone: (860) 714-3701  
Website: [www.adrc-ct.org](http://www.adrc-ct.org)

ADRC is a private non-profit corporation which provides

substance abuse treatment and supportive services. We operate a number of facilities, offering a wide range of services to help our clients achieve and maintain a life free of the destructive effects of chemical dependency.

FARRELL TREATMENT CENTER

Intensive Treatment Center

586 Main Street

New Britain, CT 06951

Telephone: (860) 225-4641

Website: [http://alcoholism.about.com/od/tx\\_ct/qt/farrell.htm](http://alcoholism.about.com/od/tx_ct/qt/farrell.htm)

Primary Focus: Substance abuse treatment services

Services Provided: Substance abuse treatment

Type of Care: Residential short-term treatment (30 days or less)

RUSHFORD CENTER

136 New London Turnpike

Glastonbury, CT 6033

Telephone: 1-800-567-0902

Website: [www.rushfordcenter.org](http://www.rushfordcenter.org)

Rushford is a private, non-profit behavioral healthcare provider.

Rushford provides inpatient and outpatient treatment services to children, adolescents, adults and families coping with substance abuse and mental health issues

HARTFORD DISPENSARY

1098 Farmington Avenue

Hartford, CT,

Telephone: (860) 527-5100

Website: [www.dmhas.state.ct.us/crmhc/services.htm](http://www.dmhas.state.ct.us/crmhc/services.htm)

Primary Focus: Substance abuse treatment services

Services Provided: Substance abuse treatment, Detoxification, Methadone Maintenance, Methadone Detoxification

Type of Care: Outpatient

HOME CARE ASSISTANCE

VNA HEALTH CARE, INC.

103 Woodland Street

Hartford, CT 06105

Telephone: (860) 249-4862

Home nursing, home health aide, homemaker, therapist, medical

social worker, extended nursing hours and home hospice and consulting service are some of the services available through Visiting Nurse and Home Care, Inc., on a sliding fee scale

#### ADDITIONAL HOME CARE SERVICES.

For additional licensed home care and nursing agencies see the yellow pages in your phone book

#### ADULT DAY CARE

##### AVERY HEIGHTS

705 New Britain Avenue

Hartford, CT 06106

Telephone: (860) 527-9127

Website [www.averyheights.org/adhc.html](http://www.averyheights.org/adhc.html)

Avery Heights is an older adult day health center that provides respite for the primary caregiver of an elderly person. Avery Heights offers a combination of social and recreation opportunities as well as health care services and meals. Vans provide transportation to and from homes in the Greater Hartford area. Hours are Monday through Friday, 7:30 a.m. to 5:00 p.m..

##### PRESTON HOUSE

144 Main Street

East Hartford, CT 06118

Telephone: (860)568-9692

Preston House is an adult day health center that provides respite for the primary caregiver of an elderly person. Preston House offers a combination of social and recreation opportunities as well as health care services and meals.

## ***SAFETY***

#### CONNECTICUT DEPARTMENT OF CHILDREN AND FAMILIES (DCF), CHILD ABUSE AND NEGLECT

Telephone: 1-800-842-2288. (Toll-free 24-hour hotline), 1-800-624-5518 (TDD/TT)

Connecticut Department of Children and Families (DCF) is legally responsible for providing services to protect children and youth up to 18 years from abuse, neglect, abandonment and exploitation. Services include family assessment, treatment planning, counseling, intensive family preservation, temporary emergency shelter, parent aides, parenting classes, aid to unwed mothers, foster care and adoption.

CRISIS INTERVENTION (Suicide Prevention, Substance Abuse, Community Information and Human Services Referral)

Infoline

Telephone: 211 (Voice, TDD/TT)

Website: [www.infoline.org](http://www.infoline.org)

Infoline is an integrated system of help via the telephone - a single source for information about community services, referrals to human services, and crisis intervention. It is accessed toll-free from anywhere in Connecticut by simply dialing 2-1-1. It operates 24 hours a day, 365 days a year. Multilingual caseworkers and TDD/TT access is available. The most frequently requested services are: Financial Assistance, Food, Protective Services, Legal Assistance, Child Care, Utilities/Heat, Social Support, Housing, and Mental Health.

DOMESTIC VIOLENCE

PRUDENCE CRANDALL CENTER, INC

P.O. box 895

New Britain, CT 06050

Telephone: 1-888-385-4225 (24 hour hotline)

Website: [www.prudencecrandall.org/pages/gethelp.cfm](http://www.prudencecrandall.org/pages/gethelp.cfm)

Domestic violence shelter program provides short-term emergency shelter for adult victims and their children, as well as free and confidential 24-hour hotlines, counseling and advocacy services, and support groups.

CONNECTICUT DEPARTMENT OF SOCIAL SERVICES (DSS)

Telephone: (860) 424-5241

For non-crisis information on shelters and services contact DSS at the above phone number.

CONNECTICUT COALITION AGAINST DOMESTIC VIOLENCE (CCADV)

Telephone: (860) 282-7899

For non-crisis information on shelters and services contact CCADV at the above phone number.

ELDER ABUSE AND NEGLECT

CONNECTICUT DEPARTMENT OF SOCIAL SERVICES (DSS)

Telephone: 1-888-385-4225



DSS provides protective services for the elderly and evaluates complaints of abuse, exploitation or abandonment of persons 60 or older. If you suspect that an elderly person is a victim, contact protective services at the above phone number.

#### CONNECTICUT LONG TERM OMBUDSMAN PROGRAM

Telephone: (860) 424-5200, 1-866-388-1888

Website: [www.ltcop.state.ct.us](http://www.ltcop.state.ct.us)

Long Term Care Ombudsman Program provides advocacy and investigates complaints concerning quality of care and quality of life received in nursing homes, resident care homes, and assisted living. Services are free and confidential. For more information or service the program can be contacted at the above phone numbers.

#### POLICE, FIRE, MEDICAL SERVICE

##### EMERGENCY SERVICE

Telephone: 911 (Voice, TDD/TT), routine calls (860) 571-2900

##### ENHANCED 911 SERVICES

Telephone: 811 or 1-800-453-7638

Wethersfield residents, who are non-ambulatory, blind, hearing or speech impaired, on a life support system or using a telecommunication device, may register with the local telephone company for enhanced 911 services. When persons so registered call 911, their name, street address, and nature of disability will appear on a TV screen at the dispatcher's office. This will assist emergency personnel in their response. Registration for this service can be obtained from the local telephone company by calling the above numbers

##### EMERGENCY DECALS

Telephone: (860) 721-2806.

A means of assisting fire and other emergency personnel in quickly locating individuals in a household who require assistance. Emergency Decals are placed on the outside top half of a bedroom window to alert emergency personnel to the precise location of children (aged 0 to 3), and residents with disabilities. Decals can be obtained by calling the above phone numbers.

##### POLICE RESIDENTAL INSPECTION SERVICE

Telephone: (860) 721-2865 (Detective Division)

Email: [police@wethersfieldct.com](mailto:police@wethersfieldct.com)

The Wethersfield Police Department offers a residential inspection service. This inspection is for the purpose of offering suggestions on how to make your residence more secure. The following items are checked during an inspection:

1. Outer doors, windows, lighting, and roof for possible entry points.
2. Exterior for vision obstructions, such as low hanging trees, large bushes/shrubs, posters in windows.
3. Alarm reliability and effectiveness.
4. Vehicle security.

Service can be obtained by calling the above phone number.

#### POISON CONTROL CENTER

Telephone: 1-800-222-1222 (24-hour hotline ), 1-866-218-5372 (TDD/TT)

Website: [poisoncontrol.uhc.edu](http://poisoncontrol.uhc.edu)

The Poison Control Center is statewide program of the University of Connecticut Health Center. The center is a 24-hour emergency service for problems related to poisoning. The center also provides information on hazardous material. Clinic services are available for poisoning problems related to occupational and environmental exposure.

#### VIAL OF LIFE

Website: [www.vialoflife.com](http://www.vialoflife.com) for information and decals.

The Vial of Life consists of two decals and a user supplied clear plastic baggie. One decal is placed on your front door at eye level. This will let emergency personnel know to go immediately to your refrigerator door for complete medical information. The second decal is placed in the baggie along with a brief medical history, record of allergies, and names and phone numbers of physicians and relatives. If you should become ill and unable to speak, the arriving rescue team can quickly and easily get information on health history and needs. The baggie with decal showing is taped to the outside door of your refrigerator.

#### SEXUAL ASSAULT

Telephone: (860) 282-9881, 1-888-999-5545 (24-hour, Toll-free Hotline), 1-888-568-8332 (Toll-free Spanish Response Service)

Website: [connsacs.org](http://connsacs.org)

Sexual assault crisis programs provide free, confidential, direct services for past and present victims of sexual assault and their families.

EMERGENCY INFORMATION

EMERGENCY – POLICE – FIRE - .MEDICAL

Voice, TDD/TT Users .....	911
TDD/TT Users, if unable to call 911, call Relay	
Connecticut. ....	1-800-842-9710
TDD/TT Users, if unable to call 911 or Relay	
Connecticut, call Connecticut State Police Direct Line ...	1-860-685-8386

ROUTINE POLICE NUMBER (24 Hours a day)

Telephone: (860) 721-2901

TOWN MANAGER'S OFFICE

Telephone: (860) 721-2801

PRIMARY SHELTER LOCATION

Pitkin Community Center  
First shelter to open in the case of emergency

CONNECTICUT DEPARTMENT OF EMERGENCY MANAGEMENT & HOMELAND SECURITY (DEMHS)

Telephone: (860)-566-3180  
Website: [www.ct.gov/demhs](http://www.ct.gov/demhs)

CONNECTICUT DEPARTMENT OF PUBLIC HEALTH

Telephone: (860)-509-8000  
Website: [www.dph.state.ct.us/ready.htm](http://www.dph.state.ct.us/ready.htm)

CONNECTICUT POISON CONTROL CENTER

Telephone: (800)-222-1222  
Website: [poisoncontrol.uchc.edu](http://poisoncontrol.uchc.edu)

The Poison Control Center is statewide program of the University of Connecticut Health Center. The center is a 24-hour emergency service for problems related to poisoning. The center also provides information on hazardous material. Clinic services are available for poisoning problems related to occupational and environmental exposure.

CONNECTICUT LIGHT & POWER (CL-P) OUTAGE MAP

Website: [www.cl-p.com/stormcenter/map.asp](http://www.cl-p.com/stormcenter/map.asp)

RED CROSS

Website: [www.redcross.org](http://www.redcross.org)

9/13/2009

REV : B

THE EMERGENCY ALERT SYSTEM (EAS)

WFSB-TV Channel 3 (Channel Number 2 on Cox Cable)

WVIT-TV Channel 30 (Channel Number 4 on Cox Cable)

WTIC Radio 1080 A

In Connecticut, we use the EAS during emergencies. When the decision is made to activate the EAS, original programming on TV or radio will be interrupted and an emergency message will be broadcast. It is important that you listen to these instructions and stay tuned for more information.

## SECTION C

### ***EDUCATION***

#### AMERICAN SCHOOL FOR THE DEAF

139 North Main Street

West Hartford, CT 06107

Telephone: (860) 570-2300 (Voice), (860) 570-2222 (TTY/TT)

Website: [www.asd-1817.org](http://www.asd-1817.org)

The American School for the Deaf offers deaf and hard of hearing students ages 3-21 a full range of educational programming from pre-school through twelfth grade. Working together with parents and local school districts, ASD staff develops an educational program designed to meet the unique needs of each student.

#### CONTINUING ADULT EDUCATION PROGRAM

The Wethersfield Board of Education offers a variety of daytime and evening courses. People with disabilities and senior citizens pay one-half of residents' fee (evening classes only).

Telephone: (860) 571-8250

Website: [www.wethersfield.k12.ct.us](http://www.wethersfield.k12.ct.us)

#### WETHERSFIELD PUBLIC LIBRARY

Wethersfield Town Hall

505 Silas Deane Highway

Wethersfield, CT 06109

Telephone: (860) 529-2665 or (860) 529-BOOK (Voice)

Website: [www.wethersfieldlibrary.org](http://www.wethersfieldlibrary.org)

The library offers a wide selection of books, magazines, recordings, newspapers, cassettes and videos. Also available are large-print books for people with visual disabilities and a lending library for shut-ins. A duplicate section is provided for children.

Open:

10:00 a.m. - 9:00 p.m. (Monday, Tuesday and Thursday)

10:00 a.m. - 5:00 p.m. (Wednesday, Friday and Saturday)

1:00 p.m. - 5:00 p.m. (Sunday (Oct.-May))

LIBRARY FOR THE BLIND AND PHYSICALLY DISABLED

198 West Street  
Rocky Hill, CT 06067  
Telephone:(860) 721-2020 (Voice)

The library lends materials to people who are visually or physically disabled..  
Materials include talking books, Braille books, books on tape, cassettes, tape  
players and flexible disc players. All can be borrowed at no charge.  
Hours: 9:00 a.m. – 3:00 p.m., Monday - Friday

SPECIAL EDUCATION

CHILD FIND

Telephone: 1-800-842-8678 (Voice)

Established by the State Department of Education, CHILD  
FIND assists in the identification of children in need of special education  
services. Call for information and referral.

CONNECTICUT CHILDREN MEDICAL CENTER (CCMC) SCHOOL

170 Ridge Road  
Wethersfield, CT 06109  
Telephone: (860) 947-4100  
Website: [www.ccmckids.org/services/ccmcschool.asp](http://www.ccmckids.org/services/ccmcschool.asp)

The CCMC School provides comprehensive special educational  
services for students, ages 5 to 21 years, who require intensive  
intervention due to severe emotional, behavioral, physical and/or  
learning problems. Referrals to the CCMC School are made  
through the student's local education agency. The School maintains  
an open door policy and school district representatives,  
parents/guardians, and related professionals are welcome to call  
and arrange for a courtesy visit, to the school.

CONNECTICUT PARENT ADVOCACY CENTER (CPAC)

338 Main Street

Niantic, CT 06357

Telephone: 1-800-445-2722 (Voice) 1-860-739-3089 (TDD/TT)

Email: [cpac@cpacinc.org](mailto:cpac@cpacinc.org)

Website: [www.cpacinc.org](http://www.cpacinc.org)

Informs parents of children with disabilities about special education rights and procedures, and provides information and referral services for related problems. Services include free workshops on parents' rights and responsibilities under special education. Parent consultants are available to answer questions about special education.

LEARNING DISABILITIES ASSOCIATION (LDA)

999 Asylum Avenue

Suite 504

Hartford, CT 06105

Telephone: (860) 560-1711 (Voice)

Email: [information@ldact.org](mailto:information@ldact.org)

Website: [www.ldact.org](http://www.ldact.org)

LDA is a national, non-profit organization dedicated to making a positive difference in the educational experience of children and adults with learning disabilities and related disorders. Support groups are available.

SPECIAL EDUCATION RESOURCE CENTER (SERC)

25 Industrial Park Road

Middletown, CT 06457-1520

Telephone: (860) 632-1485 (Voice)

Email: [info@ctserc.org](mailto:info@ctserc.org)

Website: [www.ctserc.org](http://www.ctserc.org)

Assists professionals and parents as they endeavor to provide an appropriate education for children and youth who have disabilities and/or are gifted or talented. SERC services include a library, an instructional resources exhibit, workshops and conferences, a newsletter, and dissemination of information.

**WETHERSFIELD PUBLIC SCHOOL SPECIAL SERVICES**

127 Hartford Avenue

Wethersfield, CT 0109

Telephone: (860) 571-8141

Website: [www.wethersfield.k12.ct.us/District/special\\_services.htm](http://www.wethersfield.k12.ct.us/District/special_services.htm)

Go to the website to obtain a comprehensive listing of offered special services

**PARENT RESOURCE INFORMATION CENTER**

Telephone: (860) 842-8678

The center provides direct and indirect services to the public and patient's family.

***EMPLOYMENT*****CONNECTICUT BUREAU OF REHABILITATION SERVICES (BRS)**

Department of Social Services

25 Sigourney Street

Hartford, CT 06106-5033

Telephone: (860) 424-4869 (Voice), (800) 842-1508 (Voice), (800) 842-4524 (TTY)

Website: [www.dss.state.ct.us/svcs/rehab.htm](http://www.dss.state.ct.us/svcs/rehab.htm)

BRS provides two essential programs to the citizens of Connecticut. Our Disability Determination Services (DDS) under the Social Security Administration (SSA) is the process which may provide benefits to persons with severe disabilities whose impairments prevent them from performing gainful work. DDS is 100% federally funded and makes decisions according to SSA rules and regulations.

The Vocational Rehabilitation (VR) Program affords eligible individuals with significant disabilities an opportunity to achieve their full potential for competitive employment and independence.

Services may include career counseling, vocational training, home and vehicle modifications, assistive technology, community work assessments, on the job training, job coaching, job placement, and a variety of other services.

The VR program serves people with all disabilities except legal blindness. Individuals who are legally blind receive vocational rehabilitation services through the Board of Education and Services for the Blind (BSEB).



CONNECTICUT DEPARTMENT OF LABOR (CTDOL)

Central Office  
200 Folly Brook Blvd.  
Wethersfield, CT 06109  
Telephone: (860) 263-6000  
Website: [www.ctdol.state.ct.us](http://www.ctdol.state.ct.us)

CTDOL serves job seekers, students, displaced workers and individuals who are unemployed, as well as those who want to change jobs or continue to move in their careers. At DOL facilities, assessment, testing, workshops, veterans' services, regional job fairs and career guidance are available to everyone. Current labor market information enables individuals to plan for the future.

INSTITUTE FOR HUMAN RESOURCE DEVELOPMENT

78 Eastern Boulevard  
Glastonbury, CT 06033  
Telephone: (860) 659-1166 (Voice)

Helps people with disabilities to become contributing members of society by providing integrated employment opportunities, community education and training, employer awareness, technical assistance, and occupational research

STATE OF CONNECTICUT BOARD OF EDUCATION AND SERVICES FOR THE BLIND (BESB)

184 Windsor Avenue  
Windsor, CT 06095  
Telephone: (860) 602-4000 (Voice), (800) 842-4510 (Voice), (860) 602-4002 (TTY)  
Website: [www.besb.state.ct.us](http://www.besb.state.ct.us)

BESB provides comprehensive low vision services, specialized education services, life skills training, case management, and vocational services to individuals of all ages who are legally blind and to children who are visually impaired. The agency assists them in acquiring the skills and support services necessary to be independent.

STATE OF CONNECTICUT OFFICE OF PROTECTION AND ADVOCACY FOR PERSONS WITH DISABILITIES

60-B Weston Street  
Hartford, CT 06120-1551  
Telephone: (860) 297-4300 (Voice), (860) 566-2102 (TTY), 1-800-842-7303 (Voice/TTY) in CT..

Email: [ctopapd@connix.com](mailto:ctopapd@connix.com)

Website: [www.ct.gov/opapd/site/default.asp](http://www.ct.gov/opapd/site/default.asp)

The Office of Protection and Advocacy for Persons with Disabilities is an independent State agency created to safeguard and advance the civil and human rights of people with disabilities in Connecticut. Part of a nationwide network of protection and advocacy systems, it operates under both State and federal legislative mandates to:

- Provide information, referral, and advocacy services;
- Pursue legal and administrative remedies on behalf of people with disabilities who experience disability-related discrimination;
- Selectively investigate complaints from people with disabilities and into allegations of abuse and neglect with respect to adults who have mental retardation (ages 18-59), and for people in psychiatric facilities; and,
- Provide public education and training on disability issues and to inform policy makers about issues affecting people with disabilities

#### US DEPARTMENT OF LABOR, OFFICE OF DISABILITY EMPLOYMENT POLICY

200 Constitution Ave. NW

Washington, DC 20210

Telephone: 1-866-633-7365 (Voice), 1-877-889-5627 (TDD/TT)

Website: [www.dol.gov/odep](http://www.dol.gov/odep)

The Office of Disability Employment Policy provides national leadership by developing and influencing disability-related employment policy and practice affecting the employment of people with disabilities.

#### WORKERS' COMPENSATION COMMISSION, WORKER'S REHABILITATION SERVICES

21 Oak Street

Hartford, CT 06106

Telephone:(860) 493-1500

Vocational rehabilitation services are offered to workers who have an accepted workers' compensation injury/disease that has resulted in permanent restrictions preventing the worker from returning to his/her regular job. The services available include evaluation, aptitude testing, vocational counseling, job Seeking Skills Training, On-The-Job Training and formal classroom training.

## **RECREATION**

### **SPECIAL OLYMPICS**

Connecticut/Eastern Region  
401 West Thames Street  
Building 100  
Norwich, CT 06360  
Telephone: 1-877-660-6667  
Website: [www.soct.org](http://www.soct.org)

Year round sports programs for persons with mental retardation. For program details go to the website.

### **WETHERSFIELD THERAPEUTIC RECREATION PROGRAM**

30 Greenfield Street  
Wethersfield, CT 06109  
Telephone: (860) 721-2952

Administered by the Parks and Recreation Department of Wethersfield, the program provides recreational and competitive opportunities for adults and children with disabilities.

### **WETHERSFIELD PARKS AND RECREATION DEPARTMENT**

505 Silas Deane Highway  
Wethersfield, CT 06109  
Telephone: (860) 721-2890  
Website: <http://wethersfieldct.com/rec/service.htm>

Wethersfield has 626.92 acres of parkland. In 2003, Wethersfield tied for first place as a Welcoming Community by the President's Commission on mental retardation. In 2005, over 220,000 people attended our programs, classes and facilities. For program and schedule details please go to the website.

### **WETHERSFIELD FRIENDLY SHOPPER / FRIENDLY VISITOR PROGRAMS**

505 Silas Deane Highway  
Wethersfield, CT 06109  
Telephone: (860) 721-2977

Friendly shopper is a volunteer program that helps seniors who are homebound, age 60 and over, and people with disabilities with their grocery shopping. Friendly visitors are trained volunteers who enjoy sharing their company with people who are homebound and have little or no support. These carefully screened volunteers make weekly visits and phone calls.

YMCA

Tri-Town Office  
1321 Silas Deane Highway  
Wethersfield, CT 06109  
Telephone: (860) 521-5830  
Email: [tri.townymca@ghymca.org](mailto:tri.townymca@ghymca.org)  
Website: [www.ghymca.org](http://www.ghymca.org)

"ACCESSIBLE ENTERTAINMENT" BOOK

Available from Hartford Office for People with Disabilities.  
Telephone: (860) 722-6676 (Voice), (860) 722-8331 (TDD/TT)

WILLIAM J. PITKIN COMMUNITY CENTER

30 Greenfield Street  
Wethersfield, CT 06109  
Telephone: (860) 721-2950

A facility that provides space for recreation programs and offers rental space for special events. The center, also houses, the Senior Center, 9/11 Memorial Sport Center and the Wethersfield Community TV channel 14 studio. This building is fully accessible.

**PLACES OF WORSHIP**

	Church of the Incarnation (Roman Catholic) 544 Prospect St. (860) 529- 2533	Corpus Christi Church (Roman Catholic) 84 Somerset St. (860) 529-2545	First Church Of Christ (Congregational) 250 Main St. (860) 529-1575	Jehovah's Witnesses 165 Elm Street (860) 529-7146
<b>PHYSICAL ACCESS</b>				
Handicapped parking	YES	YES	YES	YES
Ramped entrance	EAST/WEST PARKING LOT	NORTH/SOUTH PARKING LOT	MAIN STREET PARKING LOT	PARKING LOT
Wheelchair seating	FRONT & SIDE	FRONT	SIDE	SIDE
Elevator	---	---	YES	---
<b>ACCESSIBLE REST ROOMS</b>	YES	---	YES	YES
Located on first floor	YES	---	YES	YES
Located in basement	---	---	YES	---
36" wide door	YES	---	---	YES
Door opening device	KNOB	---	PULL HANDLE	PULL HANDLE
Accessible stall	---	---	YES	YES
Grab bars	---	---	YES	YES
<b>ACCESS TO INFORMATION</b>				
Large print	YES	YES	YES	YES
Sign language interpreter	---	---	YES	---
Radio/earphone hearing devices	---	---	YES	---

	Korean Catholic Church of Ct (Roman Catholic) 56 Hartford Ave. (860) 529-1456	Sacred Heart Church (Roman Catholic) 56 Hartford Ave. (860) 529-1991 (860) 536-8722	St. Paul's Lutheran Church (Lutheran) 371 Wolcott Hill Rd. (860) 529-5397	Trinity Episcopal Church (Episcopal) 300 Main St. (860) 529-6825
<b>PHYSICAL ACCESS</b>				
Handicapped parking	YES	YES	YES	YES
Ramped entrance	EAST SIDE ENTRANCE	EAST SIDE ENTRANCE	BESIDE MAIN ENTRANCE	OFFICE SIDE ENTERANCE
Wheelchair seating	FRONT	FRONT	FRONT	SIDE
Elevator	---	---	---	---
<b>ACCESSIBLE REST ROOMS</b>	YES	YES	YES	YES
Located on first floor	YES	YES	YES	YES
Located in basement	---	---	---	YES
36" wide door	YES	YES	YES	YES
Door opening device	LEVER	LEVER	LEVER	KNOB
Accessible stall	---	---	YES	---
Grab bars	---	---	YES	---
<b>ACCESS TO INFORMATION</b>				
Large print	---	YES	YES	YES
Sign language interpreter	---	---	---	---
Radio/earphone hearing devices	YES	YES	YES	---

	Wethersfield Evangelical Free Church (Evangelical Free) 511 Maple St. (860) 563-8286	Wethersfield Methodist (Methodist) 150 Prospect St. (860) 529-2025	Temple Beth Torah (Jewish) 130 Main St. (860) 529-2410
<b>PHYSICAL ACCESS</b>			
Handicapped parking	YES	YES	YES
Ramped entrance	TO THE RIGHT OF FRONT DOOR	MAIN ENTERANCE	BESIDE DRIVEWAY
Wheelchair seating	SIDE	SIDE	SIDE
Elevator	YES	---	---
<b>ACCESSIBLE REST ROOMS</b>	YES	YES	---
Located on first floor	YES	YES	---
Located in basement	YES	---	---
36" wide door	YES	YES	---
Door opening device	KNOB	KNOB	---
Accessible stall	YES	YES	---
Grab bars	YES	YES	---
<b>ACCESS TO INFORMATION</b>			
Large print	---	YES	YES
Sign language interpreter	---	---	---
Radio/earphone hearing devices	---	---	---

## **SECTION D**

### ***ENERGY ASSISTANCE***

#### **CONNECTICUT ENERGY ASSISTANCE PROGRAM (CEAP)**

Telephone: (860) 721-2977 (Voice) for eligibility requirements, information and to schedule an appointment.

Hours: 8:00 a.m. to 4:30 p.m.

Energy assistance is available to low income households to help defray primary heating costs during the winter months. If the household's primary heating costs are included in the rent the household member can also apply for assistance. This program is based on 150% or less of the Federal Poverty income guidelines established by the Federal Government. Applications are taken for this program between November 1 and the end of April at the Wethersfield Social and Youth Services Dept. Liquid assets cannot exceed \$10,000.00 for homeowners and \$7000.00 for renters. Liquid assets are those assets that can be converted to cash such as savings accounts, checking accounts, certificates of deposit, stocks and bonds.

#### **STATE APPROPRIATED FUEL ASSISTANCE PROGRAM (SAFA)**

Telephone: (860) 721-2977 (Voice) for eligibility requirements. Hours: 8:00 a.m. to 4:30 p.m.

This program offers the same type of assistance as the Connecticut Energy Assistance Program, but the income guidelines are slightly higher from 150% of the Federal Poverty Guideline to 200%. Households which have an elderly (60 years and older) or disabled member may qualify. The same assets apply for SAFA as mentioned above for CEAP.

#### **CONTINGENCY HEATING ASSISTANCE PROGRAM (CHAP)**

Telephone: (860) 721-2977 (Voice) for eligibility requirements. Hours: 8:00 a.m. to 4:30 p.m.

Energy Assistance is available to those households with annual gross income up to 60% of state median income based on the availability of federal block grant funds and/or contingency funds. Call in January to inquire on program availability.



WEATHERIZATION AND CONSERVATION ASSISTANCE

Telephone: Community Renewal Team (CRT) at 1-800-842-1132 (Voice) and ask for the Weatherization Office for more information and eligibility requirements.

Money is available for weatherization and conservation assistance for apartments and homes occupied by households who meet the income eligibility guidelines for the Connecticut Energy Assistance Program (CEAP) and the State Appropriated Fuel Assistance Program (SAFA). This assistance is available whether the household owns or rents although the landlord's cooperation must be obtained in a rental situation. Whenever a household applies for CEAP they are given an opportunity to complete a Request for Weatherization Form. Households not applying for CEAP may apply at the local Community Action Agency. Your application for Energy Assistance is also an application for Weatherization Assistance.

WETHERSFIELD EMERGENCY FUEL BANK

Telephone: (860) 721-2977 (Voice) for information and eligibility requirements. Hours: 8:00 a.m. to 4:30 p.m.

Money (one time payment ) is available to help Wethersfield residents meet energy costs on an emergency basis through a privately funded Fuel Bank.

OPERATION FUEL PROGRAM

Telephone: (860) 721-2977 (Voice) for information and eligibility requirements. Hours: 8:00 a.m. to 4:30 p.m.

Wethersfield Social and Youth Services Department provides assistance under the Operation Fuel Program. Operation Fuel is a private, nonprofit statewide program offering emergency energy assistance to low income working poor, elderly and disabled households which are either ineligible for government assistance or have exhausted their benefits. This crisis intervention program assists families facing unemployment, illness or death of a partner.

ENERGY HOTLINE

Telephone: 1-800-842-1132 (Voice), (860) 529-1310 (TDD/TT)

Connecticut Department of Social Services sponsors a hotline that provides additional information on energy related programs.

NORTHEAST UTILITIES-CONNECTICUT LIGHT & POWER

P.O. Box 2960

Hartford, CT 06141-2960

Telephone: (860) 947-2000 (Voice) 1-800-0010 (TDD/TT)

Website: [www.cl-p.com](http://www.cl-p.com)

Third Party Notification is a service which could help avoid the risk of disconnection of service due to a financial "hardship case", an oversight, neglect or misunderstanding in paying a bill. This program can be helpful for the elderly and those with hearing, reading, or language difficulties.

Legislation enacted in 1979 prohibits the refusal of electric, gas or water service for inability to pay a security deposit and prohibits termination of gas or electricity from November 1 to April 15 for any non-payment of a bill in hardship cases. If gas or electric service were terminated prior to November 1, services must be reinstated in hardship cases if the customer requests it. Special protections and rights pertain to the administration of utility service in certain circumstances. At no time during the year may a gas or electric utility shut off service or refuse to turn service on in situations where a lack of utility service is life-threatening and medical documentation is updated regularly.

A hardship case exists when a customer lacks the resources to pay the bill:

- who is receiving Aid to the Aged, Blind, or Disabled (state supplements), Temporary Family Assistance (TFA), Medicaid, Supplemental Security Income (SSI), or General Assistance (GA)/State-Administered General Assistance (SAGA).
- whose sole source of financial support is Social Security, Veterans Administration or Unemployment Compensation benefits.
- who is head of the household and unemployed.
- who is seriously ill or who has a household member who is seriously ill.
- whose income falls below 200% of the Federal income guidelines.
- whose circumstances threaten deprivation of food and other necessities of life if payment of a delinquent bill is required.

The utility customer must make payments options with the utility company. For information on their responsibilities and their rights the utility customer can enlist the assistance of the following agencies:

- Department of Public Utilities (860) 827-2622 or 1-800-382-4586
- Statewide Legal Service 1-800-453-3320 or (860) 344-0380 in Middletown
- INFOLINE 211

## ***FOOD AND CLOTHING***

### FOOD AND NUTRITION

#### MEALS ON WHEELS

VNA Health Care  
103 Woodland Street  
Hartford, CT 06108  
Telephone: (860) 249-4862 (Voice)

The Meals On Wheels program provides nutritional hot lunches and light suppers to persons with permanent or temporary disabilities who are unable to prepare meals for themselves. All kinds of diets can be accommodated.

Meals are delivered by Wethersfield volunteers at noon Monday through Sunday. Financial assistance may be available to defray the cost of the meals by asking for this assistance.

#### CW RESOURCES

200 Myrtle Street  
New Britain, CT 06053  
Telephone: (860) 229-7700, ask for the Meals On Wheels Program Director.

Similar to the above Meals on Wheels program above, hot meals are available Monday through Friday. On Friday, the driver delivers the weekend meals that could be heated up later.

#### JUNIPER HOUSE-

Telephone : (860) 523-1418  
Website: [www.juniperhouse.org](http://www.juniperhouse.org)

Meals On Wheels are prepared from the Avon Old Farm Restaurant. Kosher meals are available.

WETHERSFIELD FOOD BANK

Wethersfield Social and Youth Services Department  
505 Silas Deane Highway  
Wethersfield, CT 06109

Call (860) 721-2977, ask for your social worker and for an appointment. One bag of food per person per month is available. The ONLY exceptions are for a verifiable emergency situation approved by a worker. All clients must be accompanied in the Food Bank by their worker.

If you are a new client a short application will be required to be completed and the worker will need to see proof of your residency in Wethersfield and also a State DMV License/ and or appropriate ID as requested. Once a client completes the application they must abide by the Food Bank rules. Anyone that does not abide by the rules of the Food Bank will be barred from using it for one month. Donations are always appreciated.

MOBILE FOODSHARE

Wethersfield Social and Youth Services Department  
505 Silas Deane Highway  
Wethersfield, CT 06109  
Telephone: (860) 721-2977 (Voice) for information and eligibility requirements.  
Hours: 8:00 a.m. to 4:30 p.m.

Mobile Foodshare offers free fruits and vegetables to eligible households. Call the above number for dates, times and location.

STATE OF CONNECTICUT-FOOD STAMP PROGRAM

Department of Social Services Department(DSS)  
3580 Main Street  
Hartford, CT 06120  
1-800-842-1508, End Hunger CT.(860) 296-1127

The DSS administers the federal Food Stamp program. It also administers a State funded Food Stamp program for people who are not eligible for the federal program solely due to their status as non-citizens. The sole purpose of this program is to help low-income people buy food. Contact the DSS or the End Hunger CT phone numbers for income guidelines and asset limits.

WETHERSFIELD FRIENDLY SHOPPER PROGRAM

Social and Youth Services Dept.  
505 Silas Deane Highway  
Wethersfield, CT 06109  
(860) 721-2977, Ask for Elderly Services Coordinator

Friendly Shoppers are trained volunteers who pick up groceries for frail/isolated adults in the community and can meet the client at the grocery store and assist them with their shopping. The volunteer also helps put the groceries away and can pick up prescriptions for the client. Contact the Department for an application and home interview. Volunteers are always needed and welcomed!

WETHERSFIELD COMMUNITY CAFÉ (CRT) LUNCH PROGRAM

c/o William J. Pitkin Community Center  
30 Greenfield Street  
Wethersfield, CT 06109  
Telephone: (860) 721-2955

Hot nutritional regular meals are served Monday through Friday to town residences 60 years and over and to individuals with disabilities. Please call one day ahead between 8:00a.m. and 12:00 noon to reserve a meal. There is a nominal donation for the meal.

Program starts at 11:45a.m. so we encourage residence to come prior to this time to be seated. This is a great way to socialize and meet new people.

CLOTHING AND HOUSEHOLD ITEMS

Wethersfield Social and Youth Services Department Clothing Bank

Town Hall-505 Silas Deane Highway  
Wethersfield, CT 06109  
Telephone: (860) 721-2977

Call and ask for your worker to schedule an appointment. Used clothing at no charge for the clothing and donations from the public can be made by phoning the Department.

First Church of Christ

250 Main Street  
Wethersfield, CT 06109  
Telephone: (860) 529-1575

Provides used clothing at low cost. For more information please call the thrift shop.

## ***FINANCIAL AND LEGAL SERVICES***

### FINANCIAL SERVICES

#### Wethersfield Social and Youth Services

Provides financial assistance to those with no resources or with only limited incomes through Special Needs Fund and other resources as available. Assists with the location of private sources of aid. Assists persons in applying for Town, State and Federal and Veteran programs.

Telephone: (860) 721-2977 for information.

#### Property Tax Relief for Wethersfield Residents

Connecticut law provides for annual tax relief payments for certain homeowners. To be eligible for such a grant you must :

- Be determined totally disabled by Social Security and receiving disability benefits;
- Be considered legally blind; or
- Be a veteran

In addition to the above qualifications, your annual income must not exceed certain guidelines determined annually by the State of Connecticut.

For the latest information on current property tax relief programs contact the Tax Assessor's Office (860) 721- 2810.

Telephone: (860) 721-2810 (Voice) 721-2798 (TDD/TT).

#### Rent Relief Program for Persons with Total Disability

Connecticut law provides rent relief payments for certain renters. To be eligible for an annual grant you must:

- Be determined totally disabled by Social Security and receiving disability benefits. (If receiving benefits from a source other than Social Security, information must be provided by Social Security explaining why the person is not receiving benefits through their system.)
- In addition to the above qualification, your annual income must not exceed certain income guidelines determined annually by the State of Connecticut.

For information on the above program, contact the Social and Youth Services Department-Program begins May 15th and ends September 15th of every year.

Telephone: (860) 721-2977 (Voice), (860) 721-2798 (TDD/TT)

MOTOR VEHICLE ADAPTED AND/OR MODIFIED FOR USE BY PERSON WITH DISABILITY

1. Any vehicle used exclusively for transporting a person with a disability may be exempt from taxation.
2. Applications are filed annually between September 1 and November 1, The Assessor shall then inspect the vehicle to determine that it has been adapted and/or modified.
3. Vehicles used to transport an individual for payment do not qualify.

SOLDIERS, SAILORS. AND MARINES FUND

101 South Street

West Hartford, CT 6110-1967

Telephone: (860) 953-4345, 1 800-491-4941

Website: [www.state.ct.us/ssmf](http://www.state.ct.us/ssmf).

Provides short term financial assistance for Connecticut Veterans who served during war time and who were honorably discharged. Certain criteria has to be met to qualify for assistance.

SOCIAL SECURITY ADMINISTRATION

2<sup>nd</sup> Floor

960 Main Street

Hartford, CT 06103

Telephone: (860) 493-1857, 1 -800-772-1213, 1-800-325-0778 (TDD)

This agency provides information on eligibility for Social Security benefits, including Social Security Disability Insurance (SSDI) and Supplemental Security Income (SSI).

OFFICE OF HEALTH CARE ACCESS (OHCA)

410 Capitol Avenue

MS #13HCA

PO Box 340308

Hartford,CT 06134-0308

Telephone: (860) 418-7001, 1- 800-797-9688

Website: [www.ct.gov/ohca](http://www.ct.gov/ohca)

OHCA provides guidance to consumers about how to get assistance with hospital bills.

CONNECTICUT HEALTH INSURANCE ASSISTANCE, OUTREACH,  
INFORMATION, COUNSELING AND ELIGIBILITY SCREENING  
PROGRAM (CHOICES)

Telephone: (860) 424-5862, 1-800-994-9422

The Department of Social Services, in partnership with Area Agencies on Aging, administers CHOICES, a program providing free information and referrals to elders. Counselors provide assistance with health insurance options including Medicare fee-for-service, managed care (Advantage), Medicare Part D prescription plans, Medicare supplemental insurance (Medigap), and Medicare Saving Programs for individuals with low income, and sometimes a Benefit Checkup eligibility screening for Federal and State programs.

CONNECTICUT INSURANCE ASSISTANCE PROGRAM FOR AIDS  
PATIENTS (CIAPAPA)

Telephone: 1-800-842-1508

TDD/TTY: 1-800-842-4526

The state offers CIAPAPA for income eligible persons who have AIDS. The program helps patients take advantage of state and federal COBRA laws that allow for an extension of employer-provided group health insurance to people who leave their jobs. The state Department of Social Services can pay for extended insurance premiums to the extent allowed by state and federal laws for people who meet the financial, medical and other requirements.

MEDICARE

Telephone: 1-800-772-1213

TDD/TTY: 1-800-325-077

Medicare is a federal health insurance program administered by the Health Care Financing Administration (HCFA) for people age 65 or older, people with permanent kidney failure, and certain disabled persons. Part A Hospital Coverage pays a share of the costs for hospital, nursing home, and home health care. Part B Medical Coverage pays for a share of the costs for physicians and other medical expenses and health services not covered under the hospital coverage.



MEDICARE ASSIGNMENT PROGRAM (CONNMAP)

Telephone: (860) 424-4925  
TDD/TTY: 1-800-443-9946

ConnMAP, administered by the Department of Social Services (DDS) is a program for lower-income elders who meet residency and income requirements and are enrollees of Medicare Medical Insurance (Part B). It is designed to assure Connecticut enrollees that health care providers who agree to treat them will not charge more than Medicare-approved rates for services covered by Medicare Part B.

CONNECTICUT PHARMACEUTICAL ASSISTANCE CONTRACT TO THE ELDERLY AND DISABLED PROGRAM (CONNPACE)

Telephone: (860) 832-9265  
TDD/TTY 1-800-423-5026

ConnPACE, administered by the Department of Social Services (DDS) is a program that pays the cost of some prescription drugs for people 65 years of age or older and those over the age of 18 and disabled under Social Security and with residency and income requirements. The program pays for prescriptions only after the deductible has been met and no other type of insurance or medical coverage is available.

HEALTH CARE FOR UNINSURED KIDS AND YOUTH (HUSKY)

Telephone: 1-877-248-8759  
TDD/TTY 1-800-410-1681  
Website: [www.huskyhealth.com](http://www.huskyhealth.com)

HUSKY is Connecticut's health insurance program for children and families. HUSKY is available to residence of Connecticut who are US citizens or legal immigrants. HUSKY provides a comprehensive benefit package including regular medical check-ups and well-child care; prescriptions; mental health and substance abuse services; dental check-ups and dental care, immunization, counseling, vision care, durable medical equipment and hospital care. The program has two parts, HUSKY A and HUSKY B. HUSKY A is free and covers low-income children and their parents or a caretaker relative. HUSKY B is for higher income families but only covers uninsured children up to age 19. HUSKY B requires copayments and may require a monthly premium depending on income and family size.

CHARTER OAK PLAN

Telephone: 1-877-772-8625

Website: [www.charteroakhealthplan.com](http://www.charteroakhealthplan.com)

Charter Oak Plan administered by the Department of Social Services (DDS) is an expansion of the State's HUSKY program, is designed to deliver affordable health care coverage to Connecticut adults of all incomes who are too old for HUSKY, but too young for Medicare Insurance. The plan offers coverage to adults working or not, who do not have health insurance at an affordable cost

MEDICAID (TITLE XIX)

3580 MAIN STREET

Hartford, CT 06120

Telephone: (860) 723-1000

TDD/TTY : (860) 566-7913

Medicaid is a joint federal/state health insurance program administered by the state Department of Social Services (DDS). Medicaid provides coverage for a comprehensive array of health services and medical needs, including services not covered by Medicare. Some services require prior authorization from DSS.

QUALIFIED MEDICARE BENEFICIARY (QMB)SPECIFIED LOW-INCOME MEDICARE BENEFICIARY (SLMB)ADDITIONAL LOW INCOME MEDICARE BENEFICIARY (ALMB)PROGRAMS

3580 MAIN STREET

Hartford, CT 06120

Telephone: 1-800-609-5627

QMB, SLMB, AND ALMB, administered by the Department of Social Services (DSS), are federal and state-funded programs that provide health care coverage and financial assistance in paying Medicare costs for certain Medicare beneficiaries. QMB pays all Medicare premiums, deductibles and co-payments – up to approved rates – for eligible individuals. It was designed to fill the gaps in Medicare coverage by eliminating out-of-pocket expenses for Medicare-covered services. The SLMB program pays the Medicare Part B premium only. The ALMB program also pays the full amount of Medicare Part B premium. However, funding for the ALMB program is limited, so it is important to apply as soon after January 1 as possible.

STATE- ADMINISTERED GENERAL ASSISTANCE MEDICAL PROGRAM (SAGA MEDICAL)

Telephone: 1-800-842-1508

The Department of Social Services (DSS) regional offices may provide medical assistance (SAGA Medical) to persons who are unable to pay for necessary medical expenses such as doctor visits, prescription, and the cost of hospitalization.

## LEGAL SERVICES

### Statewide Legal Services

Telephone: 1-800-453-3320 or (860) 344-0380 (Voice, TDD/TT)

Provides assistance and representation in civil cases for low-income persons and families. Must meet income guidelines.

Call for eligibility criteria and additional information.

### Greater Hartford Legal Services

Telephone: (860) 541-5000

### Lawyer Referral Service

New Haven County Bar Association

PO Box 1441

New Haven, Ct 06506-1441

Telephone: (203) 562-5750

E-Mail: [NHCBAinfo@newhavenbar.org](mailto:NHCBAinfo@newhavenbar.org) .

Website: [www.newhavenbar.org](http://www.newhavenbar.org)

### STATE PROTECTION AND ADVOCACY FOR PEOPLE WITH DISABILITIES

60 B Weston Street

Hartford, CT 06120

Telephone: (860) 297-4300 (Voice), (860) 566-2102 (TDD/TT) 1-800-842-7303 (Voice, TDD/TT)

Provides limited legal services.

### LEGAL ASSISTANCE FOR MEDICARE PATIENTS (LAMP)

Telephone: 1-800-413-7796

LAMP provides information to seniors and their families about Medicare benefits and rights of appeal. LAMP also offers legal assistance and referral for non-Medicare cases and coordinates legal representation with private attorneys and other legal assistance programs as appropriate.

### CENTER FOR MEDICARE ADVOCACY

P.O. Box 350

Willimantic, CT 06226

Telephone: (860) 456-7790 or 1-800-262-4414

Fax: (860) 456-2614.

E-Mail: [center@medicareadvocacy.org](mailto:center@medicareadvocacy.org).

Website: [www.medicareadvocacy.org](http://www.medicareadvocacy.org) .

The Center for Medicare Advocacy works to increase access to comprehensive Medicare coverage and excellent health care for elders and people with disabilities by providing the highest quality analysis, education and advocacy.

QUALIDIGM, Formerly CPRO

Telephone: 1-800-553-7590 or (860) 632-2008

Fax: (860) 632-5865

Website: [www.qualidigm.org](http://www.qualidigm.org) .

Qualidigm is a nationally recognized consulting and research company dedicated to improving the quality and safety of health care. It delivers innovative, scientifically based, practical solutions for private and public sector client..

STATE OF CONNECTICUT DEPARTMENT OF CONSUMER PROTECTION

Telephone: (860) 713-6050

Website: [www.ct.gov/dcp](http://www.ct.gov/dcp)

The State Department of Consumer Protection handles inquiries regarding consumer problems. The phone number provided above is for general information. Check the blue pages of the Hartford Phone Book for specific consumer requests or complaints.

THE CONSUMER LAW PROJECT FOR ELDERS (CLPE) AND CHOICES SMP

CLPE, a project of Connecticut Legal Services, provides free legal assistance to seniors 60 or over who have consumer questions or problems. For consumer legal help call 1-800-269-1467.

CHOICES SMP, a project of the Connecticut Department of Social Services and Area Agencies on Aging, empowers seniors to prevent healthcare fraud and scams. To report suspected fraud or scams call 1-800-994-9422.

The following is a list of actions you can take to protect your personal information. The list has been compiled by CLPE.

1. Remove your name from mail lists.

By Mail: Print out the on- form or send a postcard or letter that includes your name, home address, signature and a statement that you would like your name to be removed from mail lists, along with a check or money order for \$1.00 (to cover processing), to: Mail Preference Service PO Box 282 Carmel, NY 10512

By Internet: [www.dmachoice.org](http://www.dmachoice.org) to link with the Direct Marketing Association (DMA) website. You must register with the DMA and provide a valid credit card number for identification purposes, but there is no charge for this service.

2. Put your name on the national Registry "Do not Call" list.

By Phone: Call 1-888-382-1222

By Internet: [www.donotcall.gov](http://www.donotcall.gov)

3. Remove your name from pre-screened credit offers.

By Phone: Call 1-888-567-8688

By Internet: [www.optoutprescreen.com](http://www.optoutprescreen.com) to fill out the opt-out form.

4. Remove your email address from commercial email lists.

The Email Preference Service (eMPS) is available to companies for the sole purpose of removing your email address from their email lists. eMPS is a consumer service sponsored by the Direct Marketing Association (DMA). Although registration with eMPS will help reduce the number of emails you receive, it will not stop all commercial emails. The DMA does not provide marketers with consumer email lists for marketing purposes. To remove your email address from national lists. Go to [www.dmachoice.org/EMPS/](http://www.dmachoice.org/EMPS/) and fill out the registration form.

5. Check your credit reports.

[Annualcreditreport.com](http://Annualcreditreport.com) is the only authorized online source for you to get a free credit report under federal law. You can get a free report from each of the three national credit reporting companies every 12 months. Some other sites claim to offer "free" credit reports, but may charge you for another product if you accept a "free" report. Do not contact the three nationwide consumer reporting companies individually for this free report.

By Phone: Call 1-877-322-8228

By Mail: Annual Credit Report Request Service, PO Box 105281, Atlanta, Georgia 30348-50281

By Internet: [www.annualcreditreport.com](http://www.annualcreditreport.com)

6. Put a security freeze on your credit files

A security freeze prevents the release of any information from your credit reports and remains in place until you lift it. In Connecticut a security freeze costs \$10 to place and \$10-\$12 to lift or to temporary lift. Contact each of the 3 major credit reporting agencies below to find out how to place this freeze on your file.

Equifax 1-800-525-6285, [www.equifax.com](http://www.equifax.com) , PO Box 740241 Atlanta, Georgia 30374-0241;

Experian 1-888-397-3724, [www.exoerian.com](http://www.exoerian.com) , PO Box 9532 Allen, TX 75013

TransUnion 1-800-680-7289, [www.transunion.com](http://www.transunion.com) , Fraud Victim Div. PO Box 6790 Fullerton, CA 92834

## SECTION E

### TOWN DEPARTMENTS

#### WETHERSFIELD TOWN HALL

505 Silas Deane Highway  
Wethersfield, CT 06109  
Telephone: (860) 721-2800 (Voice)  
Website: [www.wethersfieldct.com](http://www.wethersfieldct.com)

Town Manager	(860) 721-2801
Human Resources	(860) 721-2801
Town Clerk	(860) 721-2880
Election Office (Registrars of Voters)	
Democratic Registrar	(860) 721-2820
Republican Registrar	(860) 721-2819
Finance	(860) 721-2863
Data & GIS Services	(860) 721-2855
Tax Collection	(860) 721-2825
Assessor	(860) 721-2810
Building Inspection	(860) 721 2840
Planning & Economic Development	(860) 721-2838
Engineering	(860) 721-2850
Fire Marshal	(860) 721-2806
Fire Department	(860) 721-2830
Library Services	(860) 721-2985
Wethersfield Volunteer Ambulance Association	(860) 721- 8022
Physical Services	(860) 721-2845
Police Department	(860) 721-2830
Central Connecticut Health District	(860) 721-2822
Social & Youth Services	(860) 721-2977
William J. Pitkin Community Center	(860) 721-2950
Parks & Recreation Department	(860) 721-2890
Therapeutic Recreation	(860) 721-2952

EDUCATION DEPARTMENT

Stillman Building/Board of Education

127 Hartford Avenue

Wethersfield, CT 06109

Telephone: (860) 571- 8100

Website: [www.wethersfield.k12.ct.us](http://www.wethersfield.k12.ct.us)

Superintendent of Schools	(860) 571-8110
Special Education	(860) 571-8141

OTHER AGENCIES

Medicare	1-800-MEDICARE	<a href="http://www.medicare.gov">www.medicare.gov</a>
Blue Cross/Blue Shield, Main Switch Board	203-239-4911 (local) 800- 922-1742 (in CT) 800-545-0948 (outside) CT)	<a href="http://www.anthem.com">www.anthem.com</a>



## **MISCELLANEOUS INFORMATION**

### **DISABILITY RESOURCE DIRECTORY**

This a booklet published by the State of Connecticut Office of Protection and Advocacy for People with Disabilities. This booklet provides contact information for State, Federal and Municipal Agencies, Disability Organizations and Entitlement Programs. Write or call for a copy. This publication may be obtained in alternate format upon request.

Office of Protection and Advocacy for People with Disabilities  
60-B Weston Street  
Hartford CT 06120-1551  
Telephone: (860) 297-4300 (Voice), (860) 297-4380 (TTY), 1-800-842-7303  
(Voice/TTY)  
Email: [OPA-information@po.state.ct.us](mailto:OPA-information@po.state.ct.us)  
Website: [www.ct.gov/opapd](http://www.ct.gov/opapd)

### **U. S. POSTAL SERVICE**

Elderly and/or disabled persons who have no transportation can request by speaking to their letter carrier, that mail be stopped/held when going on vacation (Give at least 2 days' prior notification). This mail will be delivered to your residence when you call the letter carrier upon your return and regular delivery will be resumed.

Murphy Road Carrier Annex  
70 Murphy Road  
Hartford, CT 06114  
Telephone: (860) 249-0625 (Voice) between 7:00AM and 9:00 AM. to reach your carrier.

### **U.S. POSTAL SERVICE (STAMPS)**

Purchase the full line of stamps by phone at **1-800-STAMPS24** (1-888-782-6724) a nominal fee will be charged for stamps purchased by phone.

### **PROGRAMS THAT HELP PEOPLE IN CONNECTICUT**

This is a social agency resource booklet providing you with information on programs which assist you in areas of energy, income maintenance, education, food and nutrition, health and housing. Write or call for a copy.

Connecticut Association for Human Services (CAHS)  
110 Bartholomew Avenue – Suite 4030  
Hartford, CT 06106-2201  
Telephone: (860) 951-2212