

TOWN OF WETHERSFIELD, CONNECTICUT

STANDARD CONSTRUCTION DETAILS, AND CONSTRUCTION INSPECTION AND CODE REQUIREMENTS FOR IMPROVEMENTS WITHIN THE TOWN RIGHT-OF-WAY

Effective October 10, 2017

Last Revised March 2024



Town of Wethersfield
Engineering Department

TABLE OF CONTENTS

STANDARD CONSTRUCTION DETAILS

SHEET No.

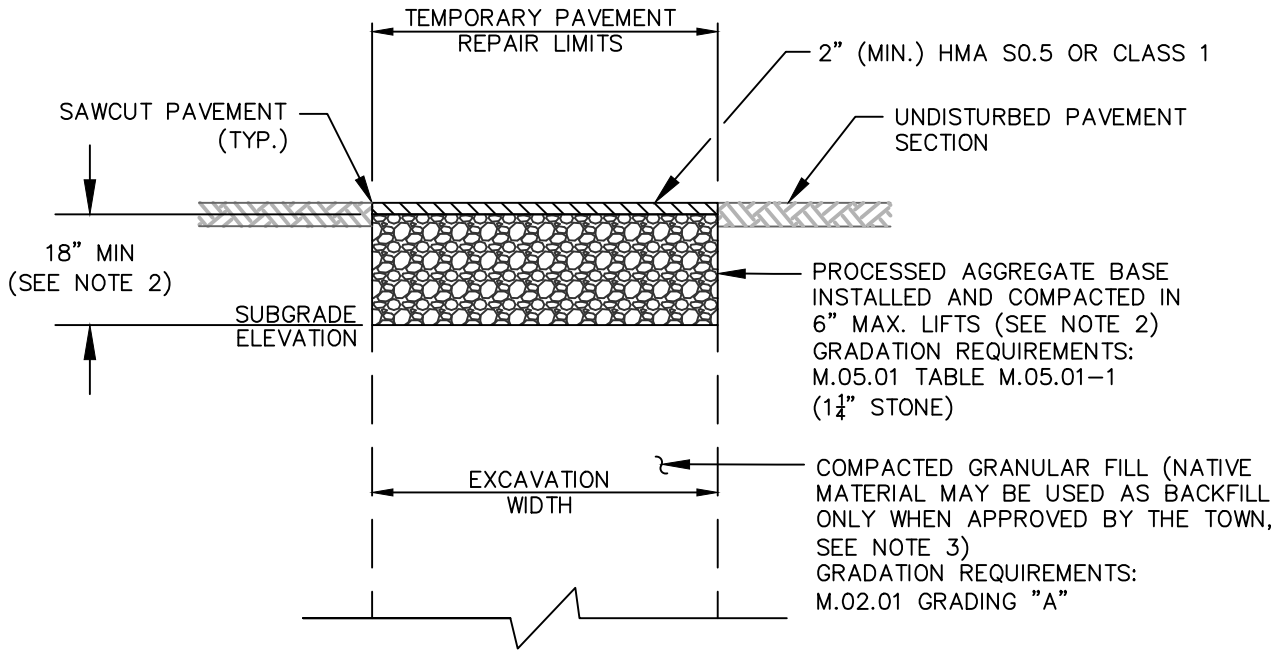
TITLE

| | |
|----|--|
| 1 | TEMPORARY PAVEMENT REPAIR |
| 2 | PERMANENT PAVEMENT REPAIR |
| 3 | BITUMINOUS CONCRETE AND CONCRETE CURB |
| 4 | GRANITE CURB |
| 5 | CONCRETE AND BRICK PAVER SIDEWALK |
| 6 | PARTIAL CONCRETE SIDEWALK REPAIRS |
| 7 | CONCRETE SIDEWALK RAMP NOTES |
| 8 | CONCRETE SIDEWALK RAMP TYPE A |
| 9 | CONCRETE SIDEWALK RAMP TYPE B |
| 10 | CONCRETE SIDEWALK RAMP TYPE C |
| 11 | BITUMINOUS CONCRETE DRIVEWAY APRON (NO SIDEWALK) |
| 12 | BITUMINOUS CONCRETE DRIVEWAY APRON (WITH SIDEWALK) |
| 13 | CONCRETE DRIVEWAY APRON |
| 14 | LAWN RESTORATION |
| 15 | SILT SACK IN CATCH BASIN |
| 16 | CONSTRUCTION ENTRANCE AND SILT FENCE |
| 17 | PAVEMENT REPAIR REQUIREMENTS FOR MAJOR ROADS |
| 18 | MILLING FOR PAVEMENT RESTORATION |

RIGHT-OF-WAY CONSTRUCTION INSPECTION REQUIREMENTS

CODE CHAPTER 139 - STREETS AND SIDEWALKS ARTICLE III - EXCAVATIONS

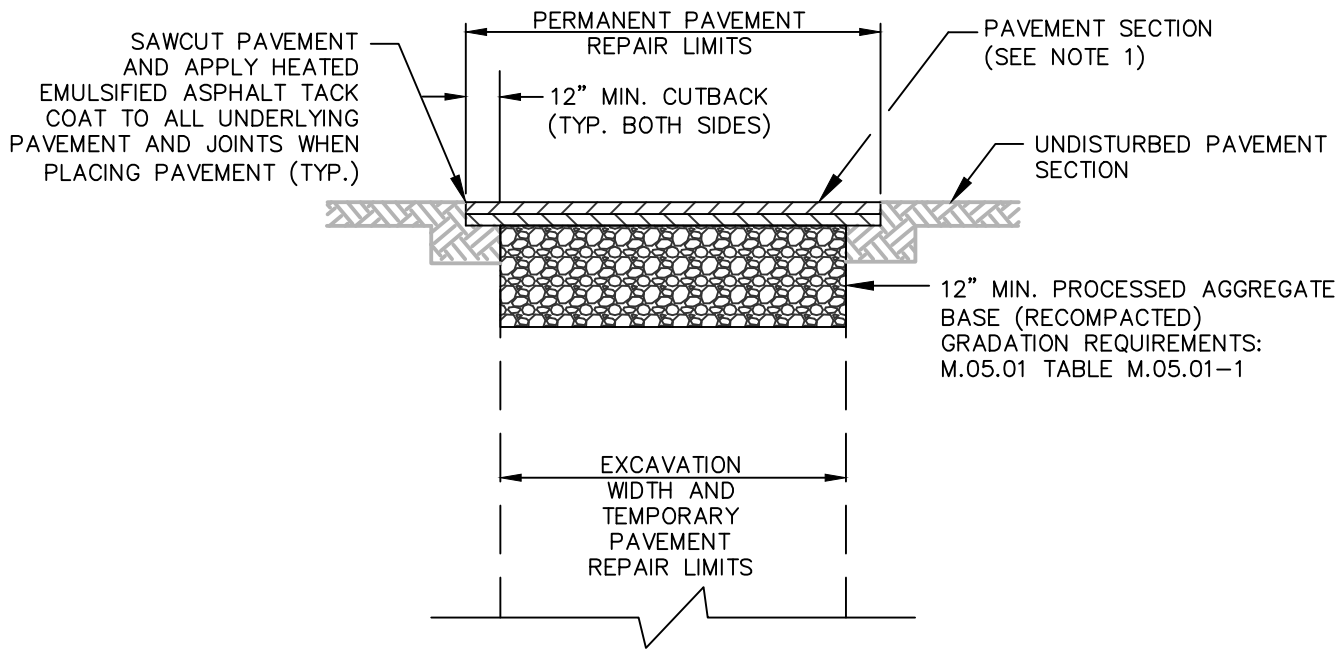
**TOWN OF WETHERSFIELD
STANDARD CONSTRUCTION DETAILS**



NOTES:

1. TEMPORARY PAVEMENT REPAIRS SHALL BE INSTALLED AND REMAIN IN PLACE FOR A MINIMUM OF 45 DAYS AND NO LONGER THAN 90 DAYS BEFORE PERMANENT REPAIRS ARE COMPLETED, UNLESS OTHERWISE APPROVED BY THE TOWN ENGINEER.
2. PROCESSED AGGREGATE BASE SHALL BE INSTALLED TO PROVIDE 18" MIN. THICKNESS BELOW THE BOTTOM OF THE TEMPORARY PAVEMENT SECTION.
3. WHEN REQUIRED BY THE TOWN, THE CONTRACTOR SHALL SUBMIT TEST RESULTS CONFIRMING THAT COMPACTION OF THE TOTAL TRENCH AREA MEETS 95% COMPACTED DENSITY.
4. IF GEOTEXTILE FABRIC IS ENCOUNTERED WITHIN THE EXCAVATION, THE TOWN SHALL BE IMMEDIATELY NOTIFIED AND FABRIC SHALL BE REPLACED WITH ONE FROM THE CT DOT APPROVED PRODUCT LIST HAVING A 12" MIN. OVERLAP AS DIRECTED BY THE TOWN.
5. IF CONCRETE ROAD BASE IS ENCOUNTERED WITHIN THE EXCAVATION, THE TOWN SHALL BE IMMEDIATELY NOTIFIED AND DOT CLASS PCC04460 CONCRETE SHALL BE POURED TO MATCH EXISTING THICKNESS. REINFORCING STEEL AND DOWELS SHALL BE INSTALLED AS DIRECTED BY THE TOWN.
6. AT THE REQUEST OF THE TOWN ENGINEER THE CONTRACTOR SHALL VERIFY AND SUBMIT PROPER TESTING RESULTS THAT COMPACTION MEETS TOWN STANDARDS FOR A 95% COMPACTED DENSITY.
7. ANY IMPACTED PAVEMENT MARKINGS SHALL BE REPLACED WITH HOT-APPLIED WATERBORNE PAINT WITHIN 14 DAYS OF TEMPORARY PAVEMENT INSTALLATION.
8. UNLESS OTHERWISE SPECIFIED, ALL CONSTRUCTION METHODS AND MATERIALS SHALL CONFORM TO CTDOT FORM 818 STANDARDS.

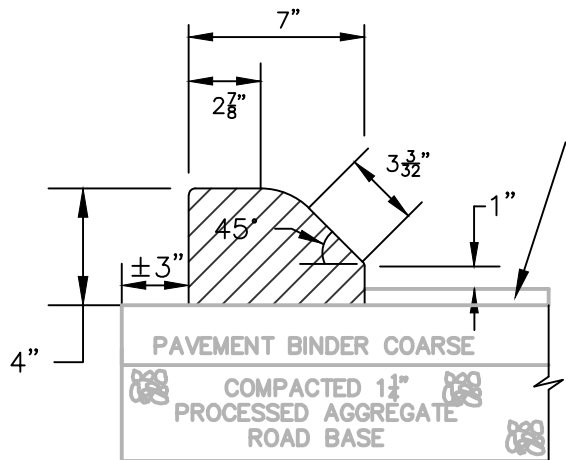
| | | |
|--|---------------------|----------------|
| TOWN OF WETHERSFIELD ENGINEERING DEPARTMENT | | |
| STANDARD CONSTRUCTION DETAILS FOR IMPROVEMENTS IN TOWN RIGHT-OF-WAY | | |
| TEMPORARY PAVEMENT REPAIR | | |
| DRAWN BY: LB | DATE: OCTOBER 2017 | Sheet No. |
| REVIEWED BY: JM | REVISED: MARCH 2024 | 1 of 18 |
| APPROVED BY: DG | SCALE: NONE | |



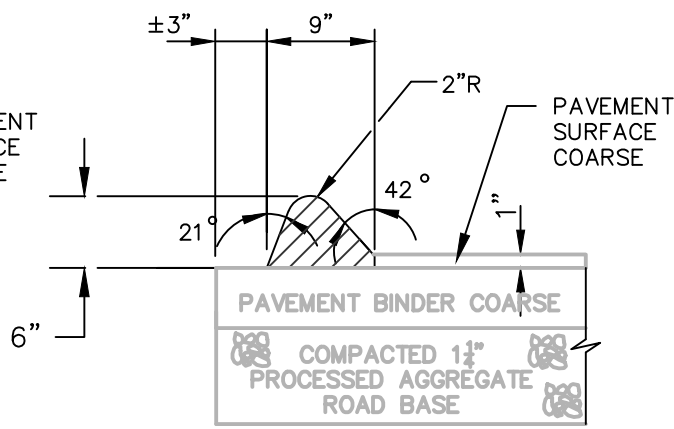
NOTES:

1. NEW PAVEMENT SHALL MATCH EXISTING PAVEMENT THICKNESS OR BE INSTALLED WITH A 4" MIN. THICKNESS, EXCEPT FOR MAJOR TOWN ROADS LISTED ON SHEET 15 WHERE A 5" MIN. PAVEMENT THICKNESS IS REQUIRED. UNLESS APPROVED OTHERWISE BY THE TOWN, PAVEMENT LIFTS SHALL BE AS FOLLOWS:
 - 4" THICKNESS
1.5" HMA S0.375 OR BITUMINOUS CONCRETE CLASS 2 SURFACE COURSE OVER 2.5" HMA S0.5 OR CLASS 1 BINDER COURSE
 - 5" THICKNESS
2" HMA S0.5 OR BITUMINOUS CONCRETE CLASS 1 SURFACE COURSE OVER 3" HMA S1.0 OR CLASS 4 BINDER COURSE
2. TEMPORARY PAVEMENT REPAIRS SHALL REMAIN IN PLACE FOR A MINIMUM OF 45 DAYS AND NO LONGER THAN 90 DAYS BEFORE PERMANENT REPAIRS ARE COMPLETED, UNLESS OTHERWISE APPROVED BY THE TOWN ENGINEER
3. CUTBACKS IN PAVEMENT SHALL BE RECTANGULAR WITH JOINTS LOCATED EITHER PARALLEL OR PERPENDICULAR TO TRAFFIC FLOW. LIMITS SHALL BE DISCUSSED WITH TOWN STAFF AT SITE PRIOR TO COMPLETING THIS WORK.
4. UNDERLYING PAVEMENT SURFACES SHALL BE CLEANED BY SWEEPING OR OTHER METHOD IMMEDIATELY PRIOR TO PLACEMENT OF PAVEMENT TO THE SATISFACTION OF THE TOWN.
5. WITHIN 30 DAYS AFTER PAVING, ALL VERTICAL JOINTS BETWEEN NEW AND EXISTING PAVEMENT SHALL BE SEALED WITH A RUBBER COMPOUND HOT-POURED SEALANT.
6. ANY IMPACTED PAVEMENT MARKINGS SHALL BE REPLACED WITH HOT-APPLIED WATERBORNE PAINT WITHIN 14 DAYS OF PERMANENT PAVEMENT INSTALLATION.
7. UNLESS OTHERWISE SPECIFIED, ALL CONSTRUCTION METHODS AND MATERIALS SHALL CONFORM TO CTDOT FORM 818 STANDARDS.

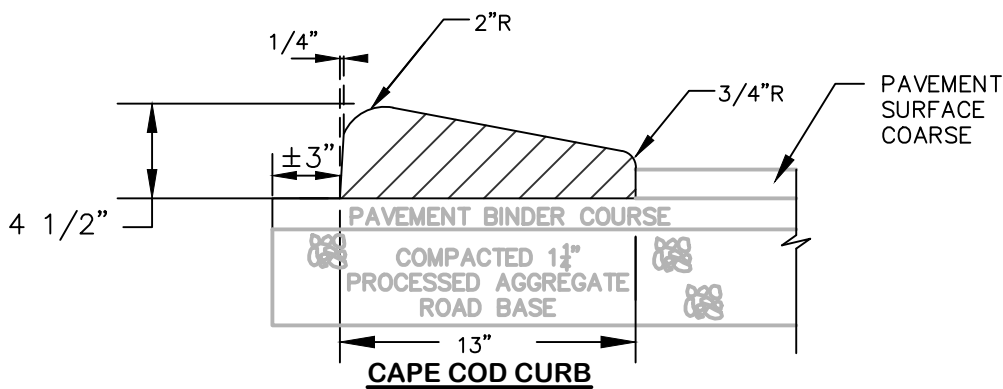
| | | | |
|--|----|----------|-----------------------------|
| TOWN OF WETHERSFIELD ENGINEERING DEPARTMENT | | | |
| STANDARD CONSTRUCTION DETAILS FOR IMPROVEMENTS IN TOWN RIGHT-OF-WAY | | | |
| PERMANENT PAVEMENT REPAIR | | | |
| DRAWN BY: | LB | DATE: | OCTOBER 2017 |
| REVIEWED BY: | JM | REVISED: | MARCH 2024 |
| APPROVED BY: | DG | SCALE: | NONE |
| | | | Sheet No. 2 of 18 |



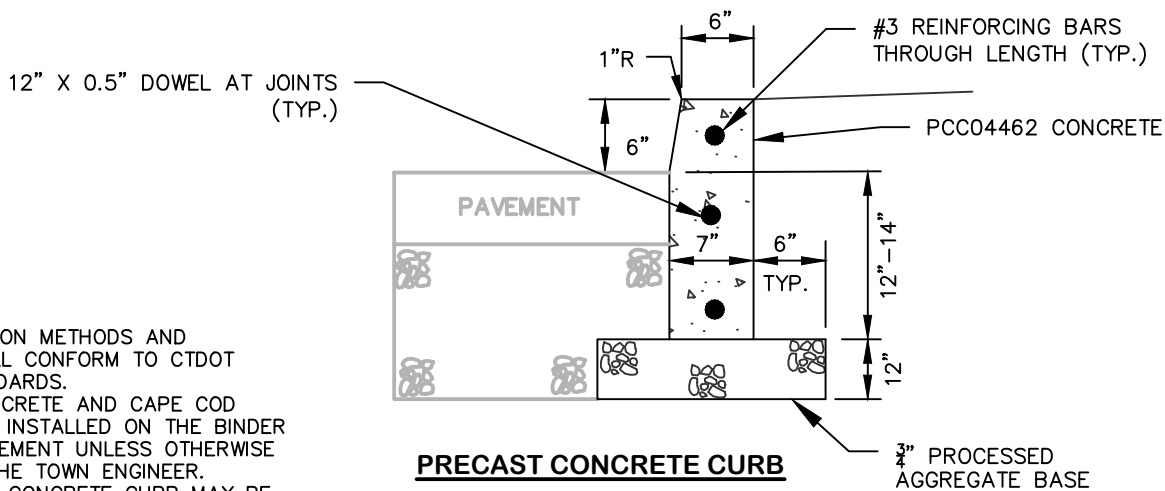
**4" BITUMINOUS CONCRETE
PARK CURB**



**6" BITUMINOUS CONCRETE
LIP CURB**



CAPE COD CURB



PRECAST CONCRETE CURB

NOTES:

1. ALL CONSTRUCTION METHODS AND MATERIALS SHALL CONFORM TO CTDOT FORM 818 STANDARDS.
2. BITUMINOUS CONCRETE AND CAPE COD CURB SHALL BE INSTALLED ON THE BINDER COURSE OF PAVEMENT UNLESS OTHERWISE APPROVED BY THE TOWN ENGINEER.
3. CAST-IN-PLACE CONCRETE CURB MAY BE INSTALLED WHEN APPROVED BY THE TOWN.
4. ALL CURBS AND JOINTS, SHALL BE SET IN 6" THICK CLASS PCC03360 (CLASS "C") CONCRETE WITH MORTAR APPLIED ALONG THE HEIGHT AND WIDTH OF ALL ABUTTING CURB FACES.
5. ALL TYPES OF CONCRETE CURB SHALL HAVE WATERPROOFING AND AN EXTERIOR PROTECTION ADMIXTURE TO WITHSTAND SALT, DEICING CHEMICALS AND FLOWING/STANDING WATER.
6. ALL CONCRETE CURB JOINTS SHALL HAVE A 1/4" MAX OPENING AND BE CAULKED WITH APPROVED ELASTOMERIC SEALING COMPOUND.

**TOWN OF WETHERSFIELD
ENGINEERING DEPARTMENT**

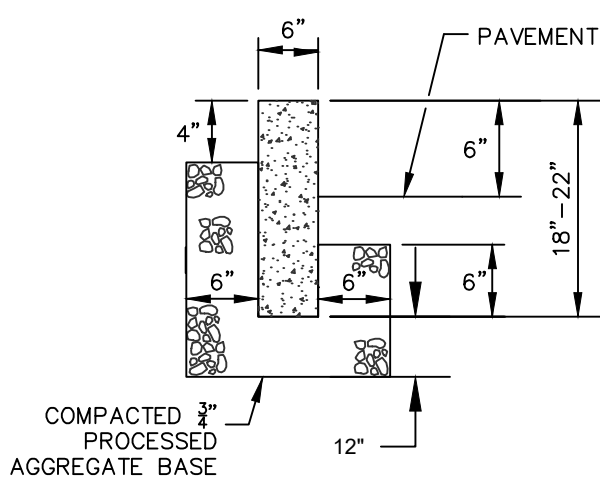
**STANDARD CONSTRUCTION DETAILS FOR
IMPROVEMENTS IN TOWN RIGHT-OF-WAY**

**BITUMINOUS CONCRETE AND
CONCRETE CURB**

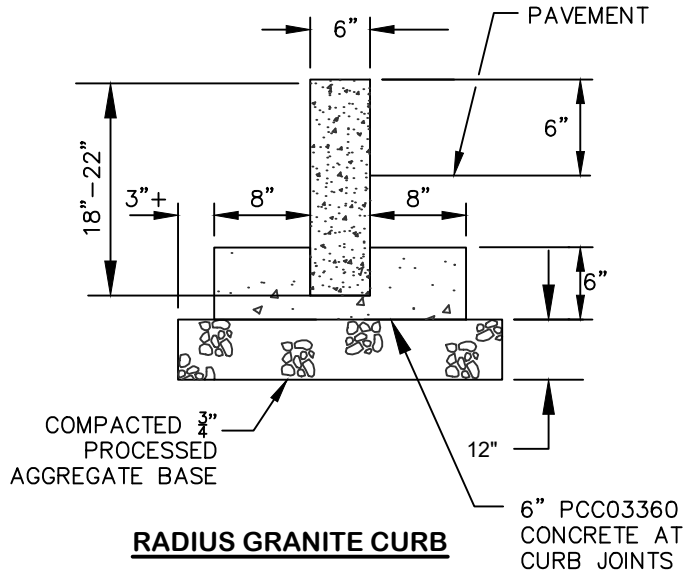
DRAWN BY: LB
REVIEWED BY: JM
APPROVED BY: DG

DATE: OCTOBER 2017
REVISED: MARCH 2024
SCALE: NONE

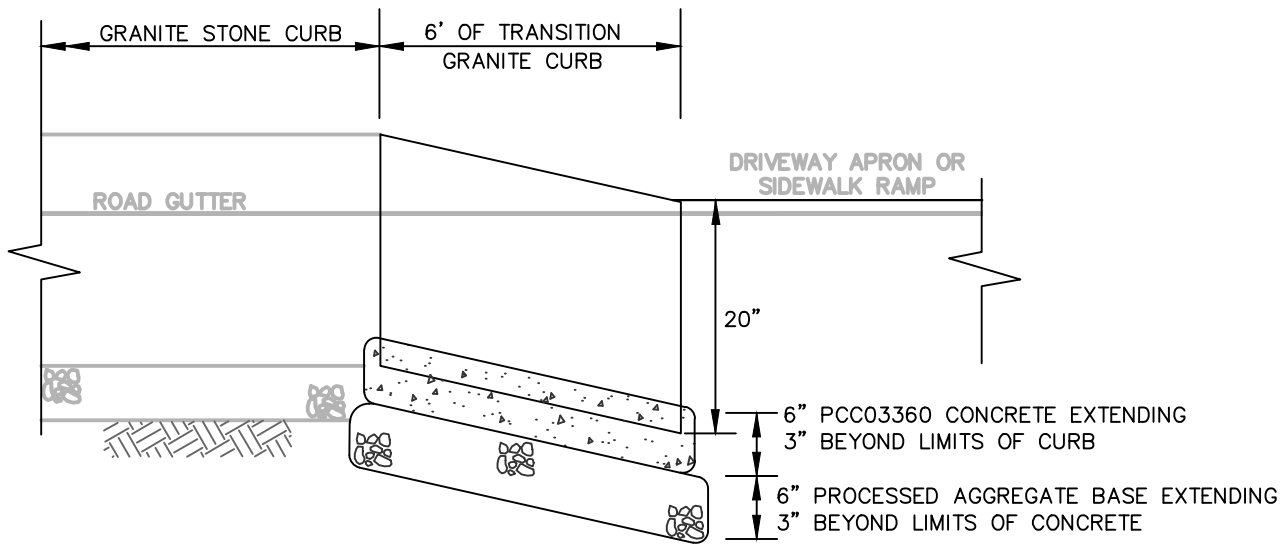
Sheet No.
3 of 18



STRAIGHT GRANITE CURB



RADIUS GRANITE CURB

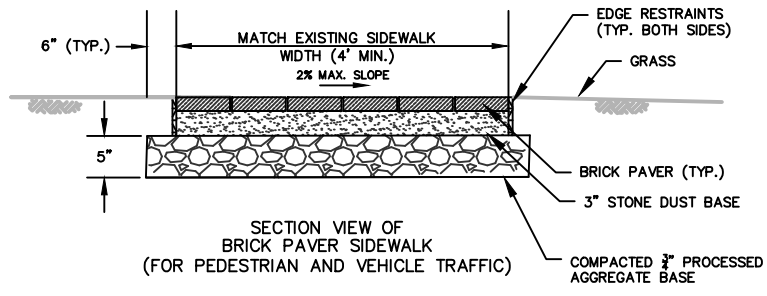
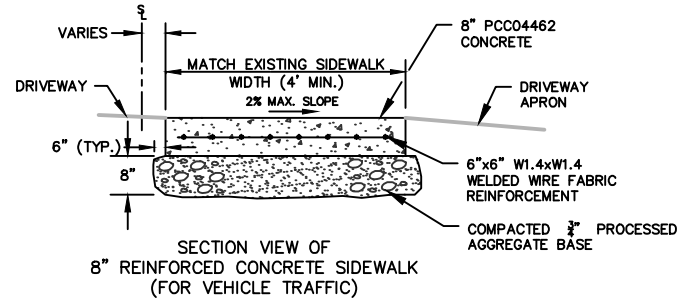
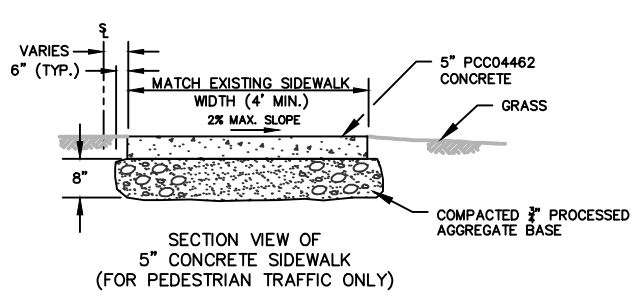
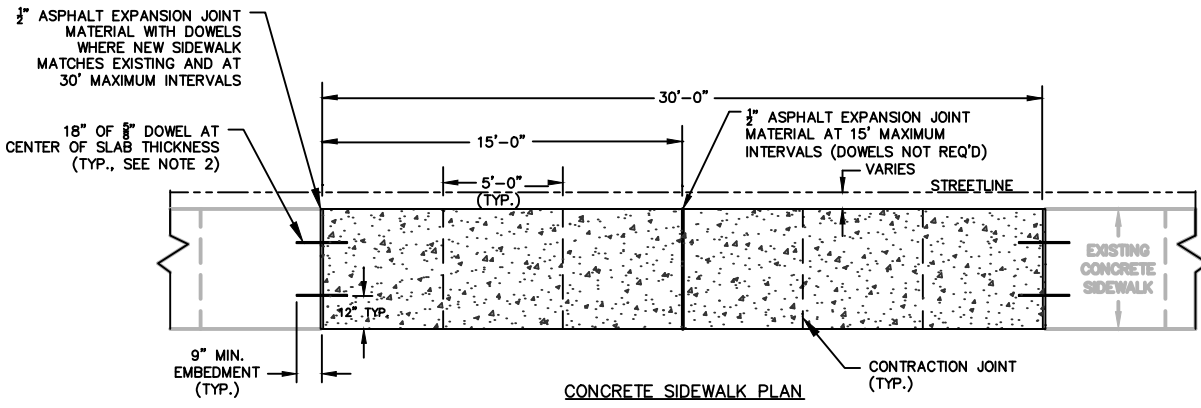


TRANSITION GRANITE CURB

NOTES:

1. MINIMUM LENGTH OF GRANITE CURB SHALL BE 4'-0" WITH FINISH-SAWN TOP AND SPLIT FACE JOINTED.
2. ALL CURBS AND JOINTS, SHALL BE SET IN 6" THICK CLASS PCC03360 (CLASS "C") CONCRETE WITH MORTAR APPLIED ALONG THE HEIGHT AND WIDTH OF ALL ABUTTING CURB FACES.
3. GRANITE CURB WITH A RADIUS OF 100' OR LESS SHALL BE CONSTRUCTED OF RADIUS GRANITE CURB. ALL RADIAL SEGMENTS MUST BE SET IN 6" THICK CLASS PCC03360 (CLASS "C") CONCRETE ALONG THE ENTIRE LENGTH.
4. STRAIGHT AND RADIUS GRANITE CURB SHALL BE USED FOR TRANSITION CURB AT DRIVEWAY APRONS AND SIDEWALK RAMPS WHERE APPLICABLE.
5. ALL CONSTRUCTION METHODS AND MATERIALS SHALL CONFORM TO CTDOT FORM 818 STANDARDS.

| | | |
|--|---------------------|----------------|
| TOWN OF WETHERSFIELD ENGINEERING DEPARTMENT | | |
| STANDARD CONSTRUCTION DETAILS FOR IMPROVEMENTS IN TOWN RIGHT-OF-WAY | | |
| GRANITE CURB | | |
| DRAWN BY: LB | DATE: OCTOBER 2017 | Sheet No. |
| REVIEWED BY: JM | REVISED: MARCH 2024 | 4 of 18 |
| APPROVED BY: DG | SCALE: NONE | |



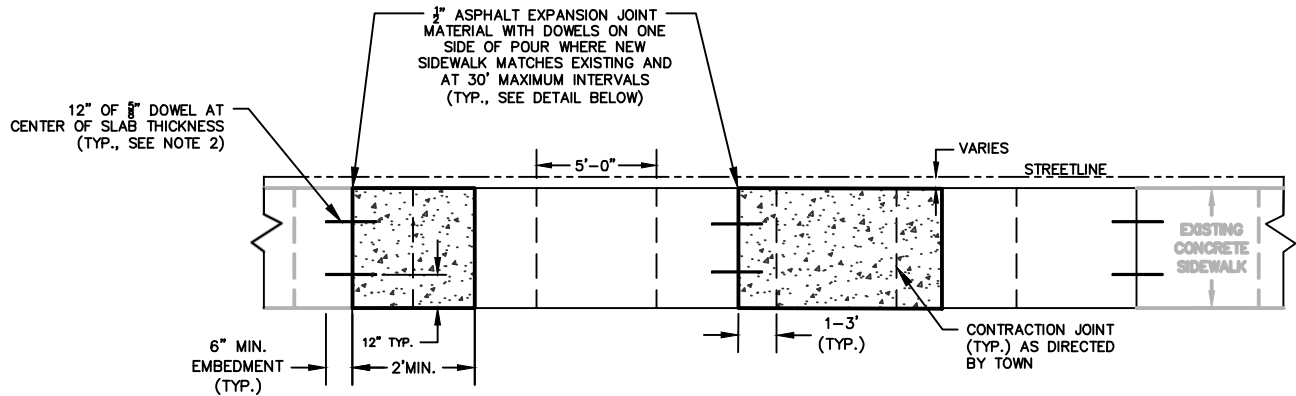
NOTES:

1. NO UTILITY POLES, SIGNS OR OTHER OBSTRUCTIONS SHALL BE LOCATED WITHIN THE LIMITS OF NEW SIDEWALK UNLESS APPROVED OTHERWISE BY THE TOWN ENGINEER.
2. DOWELS SHALL BE FIBERGLASS OR SMOOTH METAL, AND AN APPROVED BOND BREAKER OR PLASTIC SLEEVE MUST BE PROVIDED ON ONE SIDE OF THE CONCRETE SIDEWALK JOINT PRIOR TO INSTALLATION.
3. FOR CONCRETE SIDEWALKS, REINFORCED CONCRETE MUST BE INSTALLED ACROSS ALL DRIVEWAYS TO ACCOMMODATE VEHICLE LOADS. SEE BITUMINOUS CONCRETE DRIVEWAY APRON DETAIL FOR ASSOCIATED REQUIREMENTS.
4. WHEN RESETTING OF BRICK PAVER SIDEWALK IS REQUIRED, EXISTING PAVERS SHALL BE CAREFULLY REMOVED, STOCKPILED, PROTECTED AND RESET ON A COMPACTED BASE IN THE SAME PATTERN AS THE EXISTING. IF REQUIRED, ADDITIONAL STONE DUST SHALL BE INSTALLED, GRADED AND COMPACTED.
5. POLYMERIC SAND SHALL BE INSTALLED BETWEEN ALL BRICK PAVER JOINTS IN ACCORDANCE WITH THE MANUFACTURER'S REQUIREMENTS AND THE SURFACE SHALL BE SWEEPED. POLYMERIC SAND SHALL BE FLEXLOCK AS MANUFACTURED BY NEW ENGLAND SILICA INC., 1370 JOHN FITCH BOULEVARD, P.O. BOX 185, SOUTH WINDSOR, CT (860 289-7778, NEWENGLANDSILICA.COM) OR APPROVED EQUAL.
6. LIMITS OF DISTURBANCE TO ADJACENT LAWN AREAS AND DRIVEWAYS SHALL BE MINIMIZED DURING CONSTRUCTION. RESTORE ALL DISTURBED AREAS AFTER CONSTRUCTION.
7. ANY ADMIXTURES ADDED TO THE CONCRETE MIX MUST BE LISTED ON THE CTDOT QUALIFIED PRODUCTS LIST.
8. ALL CONSTRUCTION METHODS AND MATERIALS SHALL CONFORM TO CTDOT FORM 818 STANDARDS.

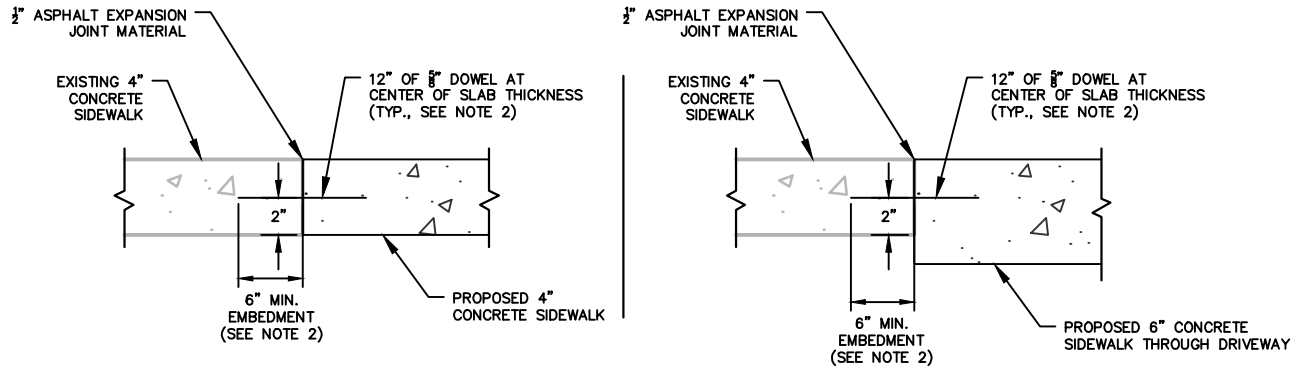
* WHEN CONCRETE SIDEWALK REPAIRS ARE REQUIRED, SLAB-RAISING (A.K.A. SLAB JACKING) OR GRINDING TO REMOVE LIPS MAY BE ALLOWABLE IF CONCRETE SLABS ARE IN GOOD STRUCTURAL CONDITION WITH APPROVAL OF THE TOWN. REFER TO SHEET 6 AND CONTACT THE ENGINEERING DEPARTMENT FOR ADDITIONAL INFORMATION.

| | | | |
|--|----|----------|-----------------------------|
| TOWN OF WETHERSFIELD ENGINEERING DEPARTMENT | | | |
| STANDARD CONSTRUCTION DETAILS FOR IMPROVEMENTS IN TOWN RIGHT-OF-WAY | | | |
| CONCRETE AND BRICK PAVER SIDEWALK | | | |
| DRAWN BY: | LB | DATE: | OCTOBER 2017 |
| REVIEWED BY: | JM | REVISED: | MARCH 2024 |
| APPROVED BY: | DG | SCALE: | NONE |
| | | | Sheet No. 5 of 18 |

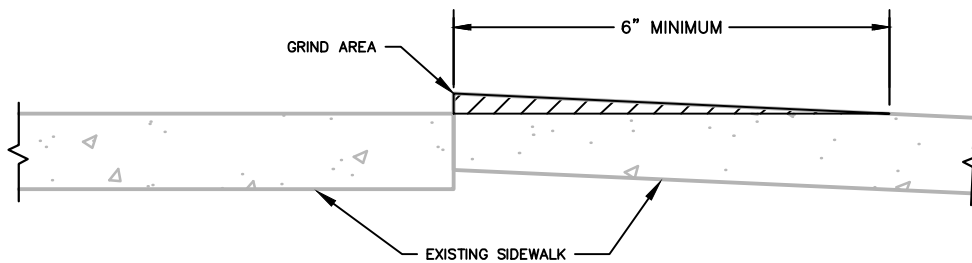
*****THIS DETAIL ONLY APPLIES WHEN THE TOWN DETERMINES THAT SLABS ARE IN GOOD STRUCTURAL CONDITION AND PARTIAL REPAIRS ARE ACCEPTABLE*****



PARTIAL CONCRETE REPAIR SIDEWALK PLAN



JOINT DETAILS



GRINDING DETAIL

NOTES:

1. NO UTILITY POLES, SIGNS OR OTHER OBSTRUCTIONS SHALL BE LOCATED WITHIN THE LIMITS OF NEW SIDEWALK UNLESS APPROVED OTHERWISE BY THE TOWN ENGINEER.
2. DOWELS SHALL BE DIPPED FIBERGLASS OR SMOOTH METAL, AND AN APPROVED BOND BREAKER OR PLASTIC SLEEVE MUST BE PROVIDED ON ONE SIDE OF THE CONCRETE SIDEWALK JOINT PRIOR TO INSTALLATION.
3. FOR CONCRETE SIDEWALKS, REINFORCED CONCRETE MUST BE INSTALLED ACROSS ALL DRIVEWAYS TO ACCOMMODATE VEHICLE LOADS. SEE BITUMINOUS CONCRETE DRIVEWAY APRON DETAIL FOR ASSOCIATED REQUIREMENTS.
4. LIMITS OF DISTURBANCE TO ADJACENT LAWN AREAS AND DRIVEWAYS SHALL BE MINIMIZED DURING CONSTRUCTION. RESTORE ALL DISTURBED AREAS AFTER CONSTRUCTION.
5. ANY ADMIXTURES ADDED TO THE CONCRETE MIX MUST BE LISTED ON THE CTDOT QUALIFIED PRODUCTS LIST.
6. ALL CONSTRUCTION METHODS AND MATERIALS SHALL CONFORM TO CTDOT FORM 818 STANDARDS.

**TOWN OF WETHERSFIELD
ENGINEERING DEPARTMENT**

**STANDARD CONSTRUCTION DETAILS FOR
IMPROVEMENTS IN TOWN RIGHT-OF-WAY**

**PARTIAL CONCRETE SIDEWALK
REPAIRS**

DRAWN BY: DK
REVIEWED BY: JM
APPROVED BY: DG

DATE: MARCH 2024
REVISED: MARCH 2024
SCALE: NONE

Sheet No.

6 of 18

CONCRETE SIDEWALK RAMP NOTES

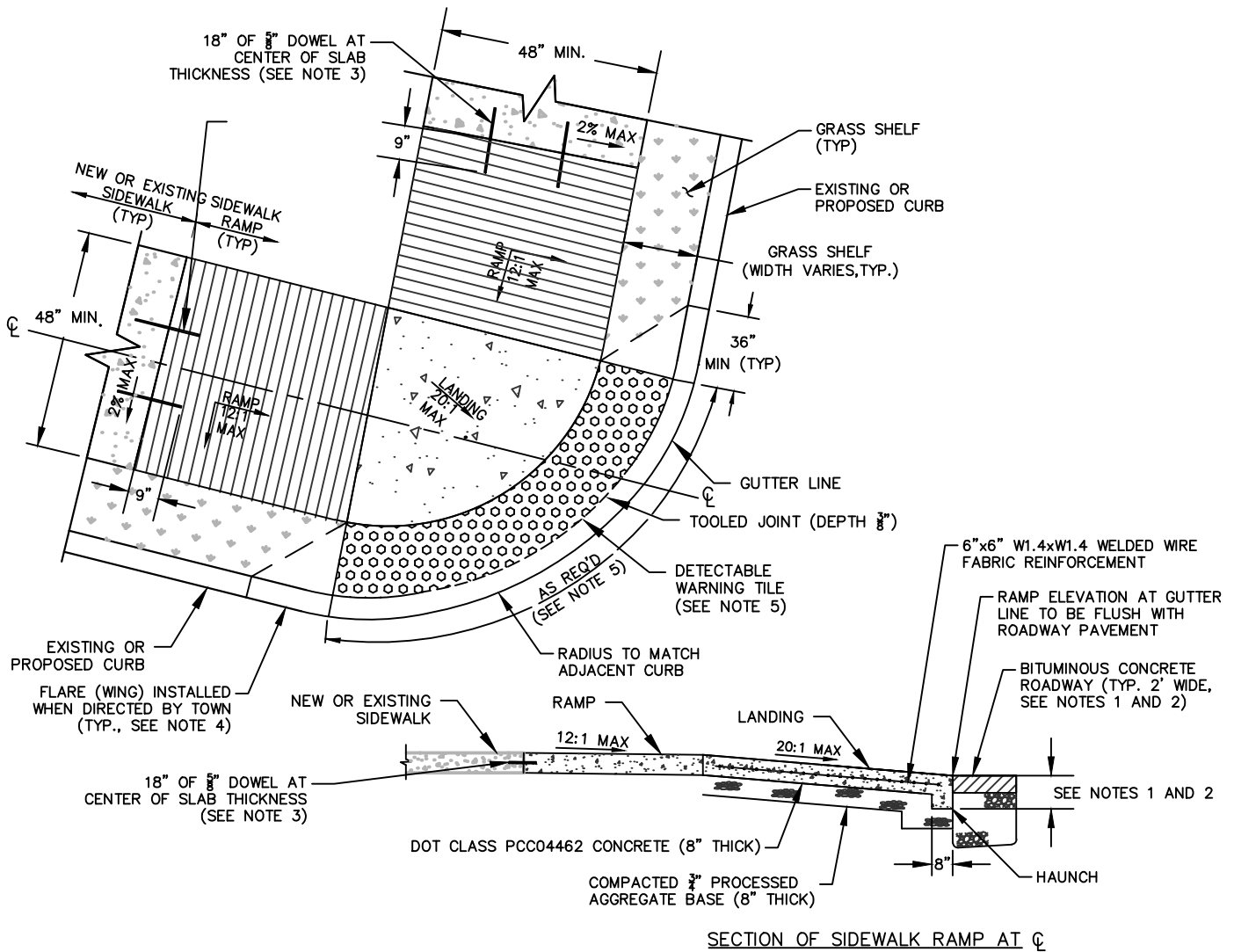
1. ALL SIDEWALK RAMPS SHALL COMPLY WITH THE APPLICABLE STATUTES OF THE STATE OF CONNECTICUT AND FEDERAL REQUIREMENTS CONCERNING THE CONSTRUCTION OF SIDEWALK RAMPS TO MEET CURRENT AMERICANS WITH DISABILITIES (ADA) STANDARDS AND PUBLIC RIGHT-OF-WAY GUIDELINES (PROWAG).
2. SIDEWALK RAMPS SHALL BE CONSTRUCTED AT ALL EXISTING AND PROPOSED PEDESTRIAN CROSSINGS AND WHERE DIRECTED BY THE TOWN. WHENEVER FEASIBLE, SEPARATE RAMPS SHALL BE PROVIDED FOR EACH PEDESTRIAN CROSSING.
3. IN GENERAL, SIDEWALK RAMPS LOCATED NEAR STREET CORNERS SHALL BE CONSTRUCTED AT THE ENDS OF THE CURB RADIUS (I.E. POINTS OF CURVATURE AND TANGENT) UNLESS APPROVED OTHERWISE BY THE TOWN.
4. UTILITY POLES, SIGNS AND OTHER OBSTRUCTIONS SHALL NOT BE LOCATED WITHIN THE LIMITS OF RAMPS WHENEVER FEASIBLE. IF UNAVOIDABLE, A CLEARANCE OF 48" MINIMUM MUST BE PROVIDED BETWEEN THE OBSTRUCTION AND THE BACK EDGE OF THE RAMP OR FACE OF CURB.
5. SIDEWALK RAMPS SHALL BE INSTALLED ENTIRELY WITHIN THE PUBLIC RIGHT-OF-WAY. CARE SHALL BE TAKEN NOT TO DISTURB EXISTING MONUMENTATION THAT MAY PRESENT IN THE VICINITY.
6. WHENEVER FEASIBLE, SIDEWALK RAMPS SHALL NOT BE INSTALLED WITHIN THE LIMITS OF PROPOSED OR EXISTING CATCH BASINS.
7. THE FINAL TEXTURE OF THE CONCRETE RAMP SURFACE SHALL BE A COARSE BROOM FINISH TRANSVERSE TO SLOPE OF THE RAMP, WHICH DOES NOT HAVE TO BE FRAMED.
8. CARE SHALL BE TAKEN TO ASSURE UNIFORM GRADE ON THE RAMP, FREE OF SAGS, LIPS AND ABRUPT GRADE CHANGES.
9. THE HAUNCH AT THE BOTTOM OF THE RAMP SHALL BE POURED INTEGRALLY WITH THE RAMP, SET FLUSH WITH THE GUTTER LINE, AND BEVELED. A MAXIMUM $\frac{1}{4}$ " LIP IS ALLOWABLE AT THE GUTTER LINE.
10. WHEREVER FEASIBLE, MAXIMUM SLOPES OF ADJOINING GUTTERS AND ROAD SURFACES IMMEDIATELY ADJACENT TO THE SIDEWALK RAMP OR ACCESSIBLE ROUTE SHALL NOT EXCEED 5%. MAXIMUM COMBINED GRADE OF RAMP AND ADJOINING SURFACE SHALL NOT EXCEED 13%.
11. RAMPS SHALL BE POURED TO PROVIDE POSITIVE DRAINAGE IN ROAD GUTTERS, WHICH MAY REQUIRE RECONSTRUCTING A PORTION OF THE ROAD SURFACE AS REQUIRED.
12. REMOVAL AND REPLACEMENT OF EXISTING SIDEWALK TO ACCOMMODATE NEW RAMP INSTALLATIONS SHALL BE TO THE NEAREST EXPANSION/CONTRACTION JOINT OR DUMMY JOINT THAT PROVIDES A MAXIMUM 12:1 SLOPE AS SHOWN IN THE DETAIL OR 15', WHICHEVER IS CLOSER, UNLESS OTHERWISE DIRECTED BY THE TOWN.
13. SIDEWALK RAMPS AT MARKED CROSSINGS SHALL BE COMPLETELY CONTAINED WITHIN THE MARKINGS, EXCLUDING ANY FLARED SIDES.
14. EXPANSION JOINTS IN CONCRETE SHALL MATCH THOSE IN ADJACENT SIDEWALKS BUT IN NO CASE SHALL THE SPACING BETWEEN EXPANSION JOINTS EXCEED 15' UNLESS OTHERWISE DIRECTED BY THE TOWN.
15. RAISED ISLANDS IN CROSSINGS SHALL HAVE SIDEWALK RAMPS AT BOTH SIDES AND A LEVEL AREA WITH A 4 FT MINIMUM LENGTH BETWEEN THE RAMPS IN THE AREA OF THE ISLAND INTERSECTED BY THE CROSSINGS. IF THIS CANNOT BE ACHIEVED, THE RAISED ISLAND SHALL BE CUT THROUGH LEVEL WITH THE ROADWAY.
16. DETECTABLE WARNING TILES SHALL BE VITRIFIED POLYMER COMPOSITE (VPC), CAST-IN-PLACE, REPLACEABLE PANEL WITH 8-BOLT PATTERN AS MANUFACTURED BY ADA SOLUTIONS, INC., P.O. BOX 3, NORTH BILLERICA, MA 01862 (1-800-372-0519) OR APPROVED EQUAL. TILE MUST BE INSTALLED TO MATCH RAMP WIDTH AND HAVE A BRICK RED COLOR CONFORMING TO FEDERAL COLORS, WHICH IS HOMOGENEOUS THROUGHOUT THE TILE.
17. INSTALL EDGE OF DETECTABLE WARNING TILES 6" FROM THE EDGE OF ROAD AND ALIGN DOMES ON A SQUARE GRID IN THE DIRECTION OF PEDESTRIAN TRAVEL.
18. ANY QUESTIONS PERTAINING TO LOCATION AND DIMENSIONS OF CONCRETE SIDEWALK RAMPS AND/OR PLACEMENT OF DETECTABLE WARNING TILES SHALL BE DIRECTED TO THE TOWN ENGINEER PRIOR TO INSTALLATION.
19. LIMITS OF DISTURBANCE TO ADJACENT DRIVEWAY AND LAWN AREAS SHALL BE MINIMIZED AND PROPERTY RESTORED DURING CONSTRUCTION.
20. IMMEDIATELY NOTIFY THE TOWN IF EXISTING TREE ROOTS ARE ENCOUNTERED DURING THE WORK TO DISCUSS PROPER REMOVAL TO AVOID DAMAGING THE ASSOCIATED TREE. INSTALLATION OF A ROOT BARRIER MAY BE REQUIRED.
21. ALL CONSTRUCTION METHODS AND MATERIALS SHALL CONFORM TO CTDOT FORM 818 STANDARDS.
22. SEE ASSOCIATED SIDEWALK RAMP DETAILS FOR ADDITIONAL INFORMATION.

TOWN OF WETHERSFIELD ENGINEERING DEPARTMENT

STANDARD CONSTRUCTION DETAILS FOR IMPROVEMENTS IN TOWN RIGHT-OF-WAY

CONCRETE SIDEWALK RAMP NOTES

| | | |
|-----------------|---------------------|----------------|
| DRAWN BY: LB | DATE: OCTOBER 2017 | Sheet No. |
| REVIEWED BY: JM | REVISED: MARCH 2024 | 7 of 18 |
| APPROVED BY: DG | SCALE: NONE | |

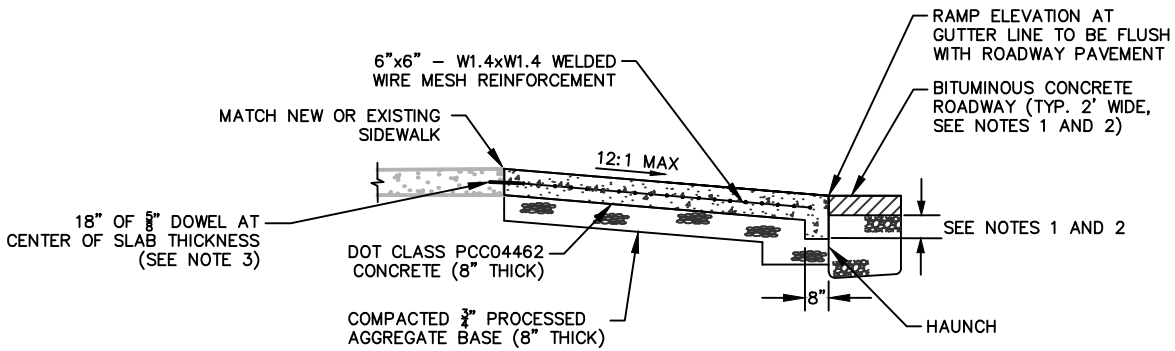
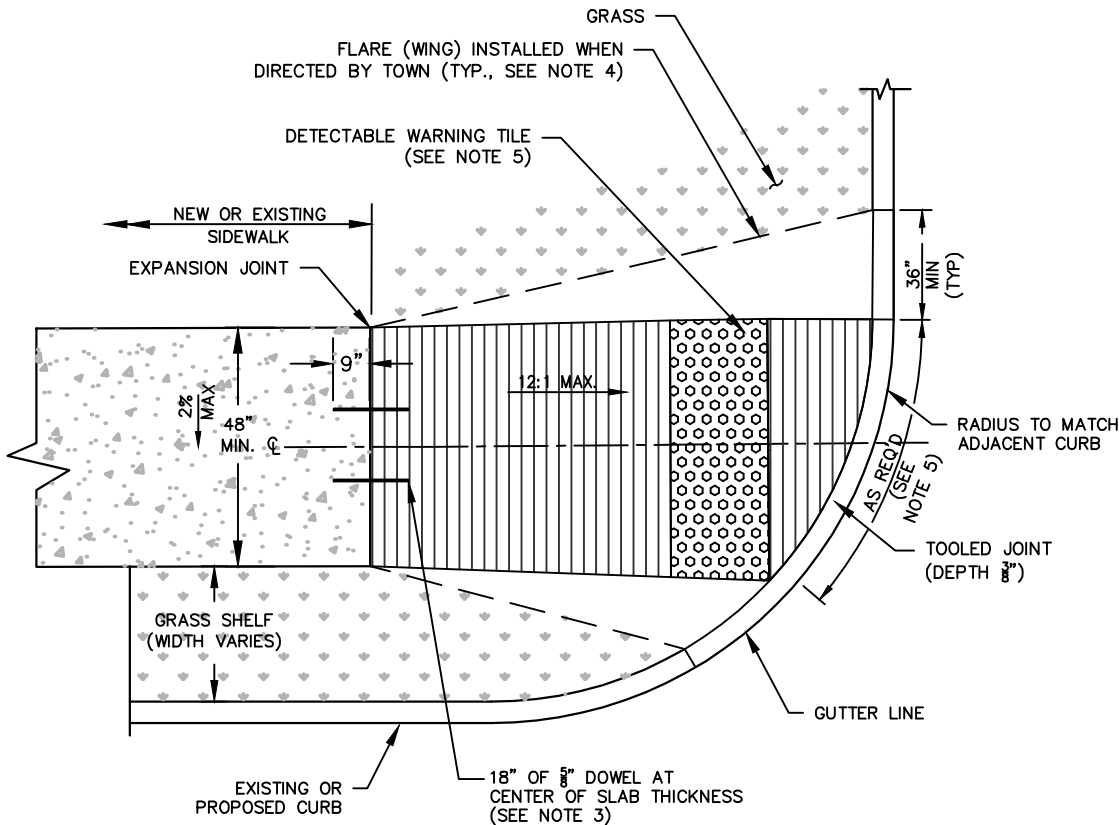


SECTION OF SIDEWALK RAMP AT C

NOTES:

1. NEW PAVEMENT SHALL MATCH EXISTING PAVEMENT THICKNESS OR BE INSTALLED WITH A 4" MIN. THICKNESS, EXCEPT FOR MAJOR TOWN ROADS LISTED ON SHEET 16 WHERE A 5" MIN. PAVEMENT THICKNESS IS REQUIRED. TEMPORARY PAVEMENT REPAIRS ARE TYPICALLY NOT REQUIRED. SEE SHEET 2 FOR ADDITIONAL INFORMATION.
2. PROCESSED AGGREGATE BASE SHALL BE INSTALLED TO PROVIDE 12" MIN. THICKNESS BELOW THE BOTTOM OF THE EXISTING PAVEMENT SECTION
3. TWO 5/8" DOWELS SHALL BE PROVIDED AT CENTER OF RAMP THICKNESS WITH 9" MIN. EMBEDMENT DEPTH WHEN NEW RAMP MATCHES EXISTING SIDEWALK. DOWELS SHALL BE FIBERGLASS OR SMOOTH METAL, AND AN APPROVED BOND BREAKER OR PLASTIC SLEEVE MUST BE PROVIDED ON ONE SIDE OF THE JOINT PRIOR TO INSTALLATION.
4. TRANSITION BITUMINOUS CONCRETE CURB TO MATCH SIDEWALK RAMP. IF CONCRETE FLARES (WINGS) ARE NECESSARY TO ACCOMMODATE ADJACENT GRADES, FLARES AND CONCRETE CURB SHALL BE POURED AT 10% MAX SLOPE AND PAID WITH SIDEWALK RAMP.
5. POUR CONCRETE RAMP TO PROVIDE A 6" CLEARANCE BETWEEN DETECTABLE WARNING TILE AND EDGE OF ROAD THAT IS FLUSH TO ROAD SURFACE.
6. ALL CONSTRUCTION METHODS AND MATERIALS SHALL CONFORM TO CTDOT FORM 818 STANDARDS.
7. REFER TO CONCRETE SIDEWALK RAMP NOTES FOR ADDITIONAL INFORMATION.

| | | | |
|--|----|----------|-----------------------------|
| TOWN OF WETHERSFIELD ENGINEERING DEPARTMENT | | | |
| STANDARD CONSTRUCTION DETAILS FOR IMPROVEMENTS IN TOWN RIGHT-OF-WAY | | | |
| CONCRETE SIDEWALK RAMP TYPE A | | | |
| DRAWN BY: | LB | DATE: | OCTOBER 2017 |
| REVIEWED BY: | JM | REVISED: | MARCH 2024 |
| APPROVED BY: | DG | SCALE: | NONE |
| | | | Sheet No. 8 of 18 |



SECTION OF SIDEWALK RAMP AT \mathcal{C}

NOTES:

1. NEW PAVEMENT SHALL MATCH EXISTING PAVEMENT THICKNESS OR BE INSTALLED WITH A 4" MIN. THICKNESS, EXCEPT FOR MAJOR TOWN ROADS LISTED ON SHEET 16 WHERE A 5" MIN. PAVEMENT THICKNESS IS REQUIRED. TEMPORARY PAVEMENT REPAIRS ARE TYPICALLY NOT REQUIRED. SEE SHEET 2 FOR ADDITIONAL INFORMATION.
2. PROCESSED AGGREGATE BASE SHALL BE INSTALLED TO PROVIDE 12" MIN. THICKNESS BELOW THE BOTTOM OF THE EXISTING PAVEMENT SECTION
3. TWO $\frac{1}{8}$ " DOWELS SHALL BE PROVIDED AT CENTER OF RAMP THICKNESS WITH 9" MIN. EMBEDMENT DEPTH WHEN NEW RAMP MATCHES EXISTING SIDEWALK. DOWELS SHALL BE FIBERGLASS OR SMOOTH METAL, AND AN APPROVED BOND BREAKER OR PLASTIC SLEEVE MUST BE PROVIDED ON ONE SIDE OF THE JOINT PRIOR TO INSTALLATION.
4. TRANSITION BITUMINOUS CONCRETE CURB TO MATCH SIDEWALK RAMP. IF CONCRETE FLARES (WINGS) ARE NECESSARY TO ACCOMMODATE ADJACENT GRADES, FLARES AND CONCRETE CURB AT 10% MAX SLOPE SHALL BE POURED AND PAID WITH SIDEWALK RAMP.
5. POUR CONCRETE RAMP TO PROVIDE A 6" CLEARANCE BETWEEN DETECTABLE WARNING TILE AND EDGE OF ROAD THAT IS FLUSH TO ROAD SURFACE.
6. ALL CONSTRUCTION METHODS AND MATERIALS SHALL CONFORM TO CTDOT FORM 818 STANDARDS.
7. REFER TO CONCRETE SIDEWALK RAMP NOTES FOR ADDITIONAL INFORMATION.

**TOWN OF WETHERSFIELD
ENGINEERING DEPARTMENT**

**STANDARD CONSTRUCTION DETAILS FOR
IMPROVEMENTS IN TOWN RIGHT-OF-WAY**

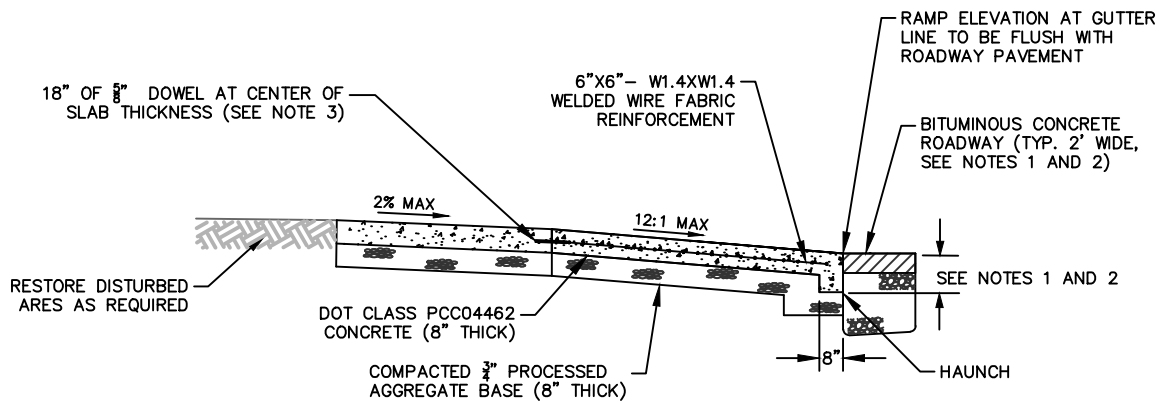
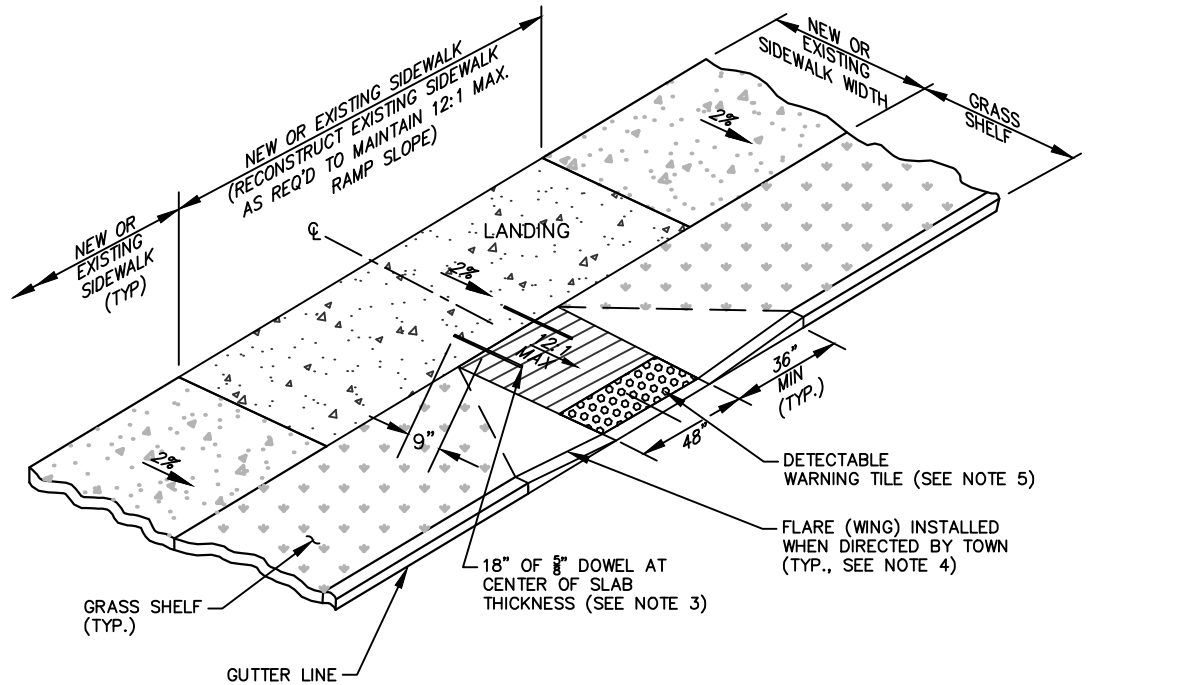
**CONCRETE SIDEWALK RAMP
TYPE B**

DRAWN BY: LB
REVIEWED BY: JM
APPROVED BY: DG

DATE: OCTOBER 2017
REVISED: MARCH 2024
SCALE: NONE

Sheet No.

9 of 18

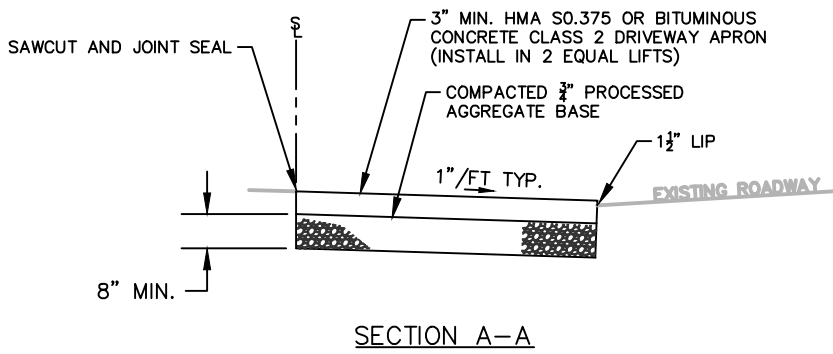
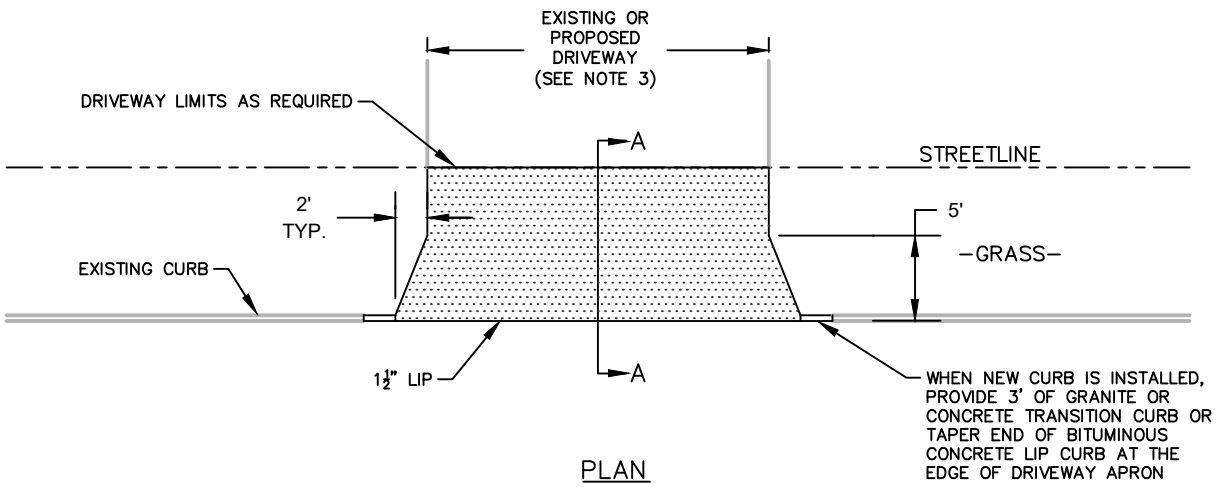


SECTION OF SIDEWALK RAMP AT ϕ

NOTES:

1. NEW PAVEMENT SHALL MATCH EXISTING PAVEMENT THICKNESS OR BE INSTALLED WITH A 4" MIN. THICKNESS, EXCEPT FOR MAJOR TOWN ROADS LISTED ON SHEET 16 WHERE A 5" MIN. PAVEMENT THICKNESS IS REQUIRED. TEMPORARY PAVEMENT REPAIRS ARE TYPICALLY NOT REQUIRED. SEE SHEET 2 FOR ADDITIONAL INFORMATION.
2. PROCESSED AGGREGATE BASE SHALL BE INSTALLED TO PROVIDE 12" MIN. THICKNESS BELOW THE BOTTOM OF THE EXISTING PAVEMENT SECTION
3. TWO $\frac{5}{8}$ " DOWELS SHALL BE PROVIDED AT CENTER OF RAMP THICKNESS WITH 9" MIN. EMBEDMENT DEPTH WHEN NEW RAMP MATCHES EXISTING SIDEWALK. DOWELS SHALL BE FIBERGLASS OR SMOOTH METAL, AND AN APPROVED BOND BREAKER OR PLASTIC SLEEVE MUST BE PROVIDED ON ONE SIDE OF THE JOINT PRIOR TO INSTALLATION.
4. TRANSITION BITUMINOUS CONCRETE CURB TO MATCH SIDEWALK RAMP. IF CONCRETE FLARES (WINGS) ARE NECESSARY TO ACCOMMODATE ADJACENT GRADES, FLARES AND CONCRETE CURB SHALL BE POURED AT 10% MAX. SLOPE AND PAID WITH SIDEWALK RAMP.
5. POUR CONCRETE RAMP TO PROVIDE A 6" CLEARANCE BETWEEN DETECTABLE WARNING TILE AND EDGE OF ROAD THAT IS FLUSH TO ROAD SURFACE.
6. ALL CONSTRUCTION METHODS AND MATERIALS SHALL CONFORM TO CTDOT FORM 818 STANDARDS.
7. REFER TO CONCRETE SIDEWALK RAMP NOTES FOR ADDITIONAL INFORMATION.

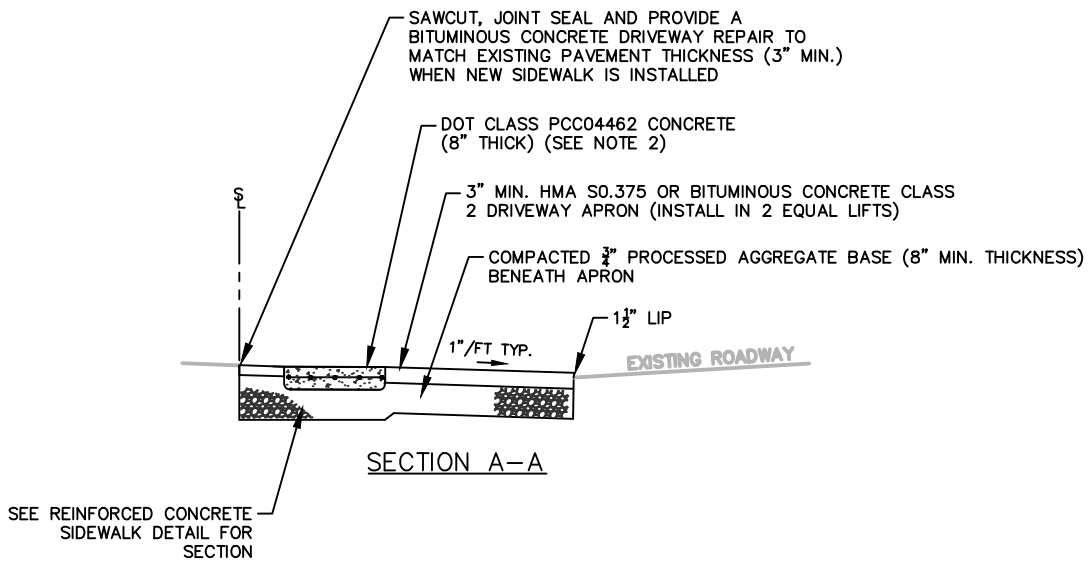
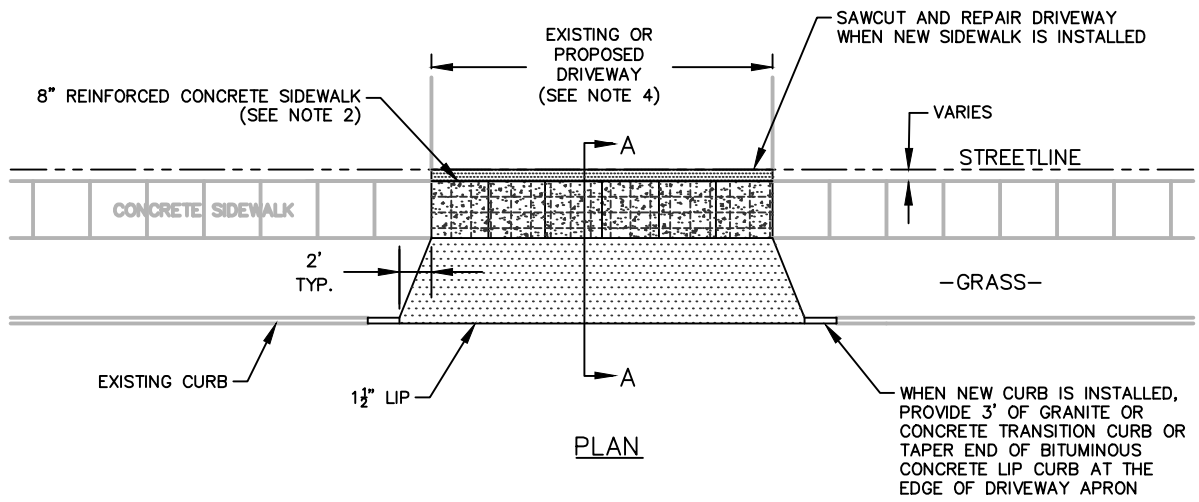
| | | |
|--|---------------------|-----------------|
| TOWN OF WETHERSFIELD ENGINEERING DEPARTMENT | | |
| STANDARD CONSTRUCTION DETAILS FOR IMPROVEMENTS IN TOWN RIGHT-OF-WAY | | |
| CONCRETE SIDEWALK RAMP TYPE C | | |
| DRAWN BY: LB | DATE: OCTOBER 2017 | 10 of 18 |
| REVIEWED BY: JM | REVISED: MARCH 2024 | |
| APPROVED BY: DG | SCALE: NONE | |



NOTES:

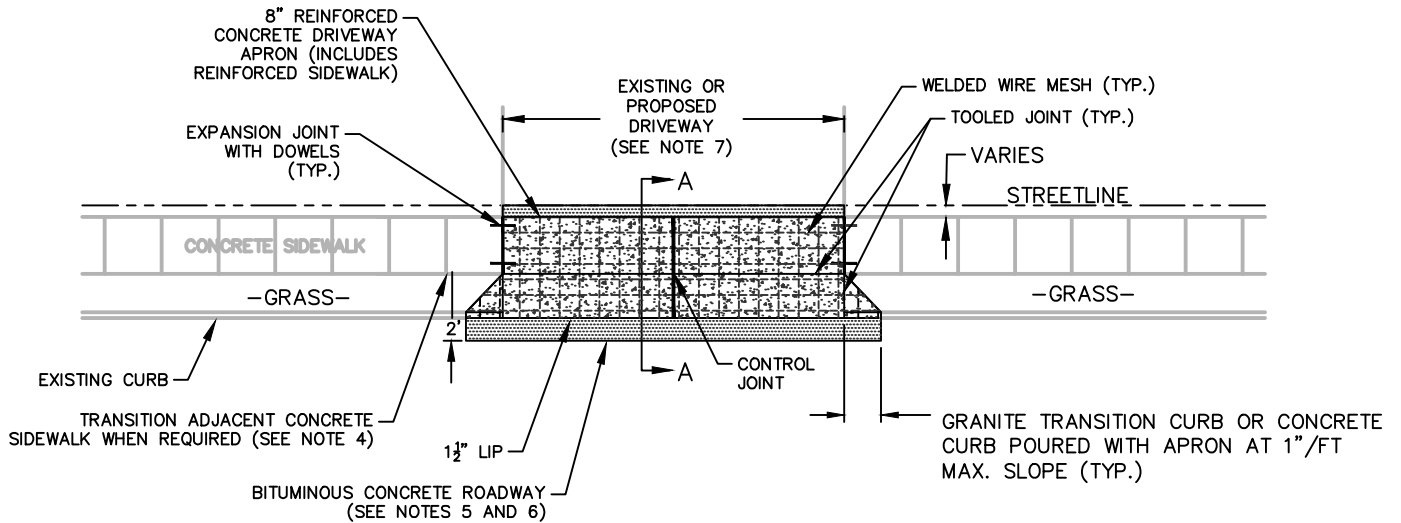
1. SEE RESPECTIVE DETAILS FOR CURB REQUIREMENTS.
2. MINIMUM DISTANCE BETWEEN MULTIPLE DRIVEWAY OPENINGS SHALL BE 10'.
3. MINIMUM DRIVEWAY WIDTH IS 10' AND MAXIMUM WIDTH IS 20' UNLESS OTHERWISE APPROVED BY THE TOWN ENGINEER.
4. ALL CONSTRUCTION METHODS AND MATERIALS SHALL CONFORM TO CTDOT FORM 818 STANDARDS.

| | | | |
|--|----|----------|------------------------------|
| TOWN OF WETHERSFIELD ENGINEERING DEPARTMENT | | | |
| STANDARD CONSTRUCTION DETAILS FOR IMPROVEMENTS IN TOWN RIGHT-OF-WAY | | | |
| BITUMINOUS CONCRETE DRIVEWAY APRON (NO SIDEWALK) | | | |
| DRAWN BY: | LB | DATE: | OCTOBER 2017 |
| REVIEWED BY: | JM | REVISED: | MARCH 2024 |
| APPROVED BY: | DG | SCALE: | NONE |
| | | | Sheet No. 11 of 18 |

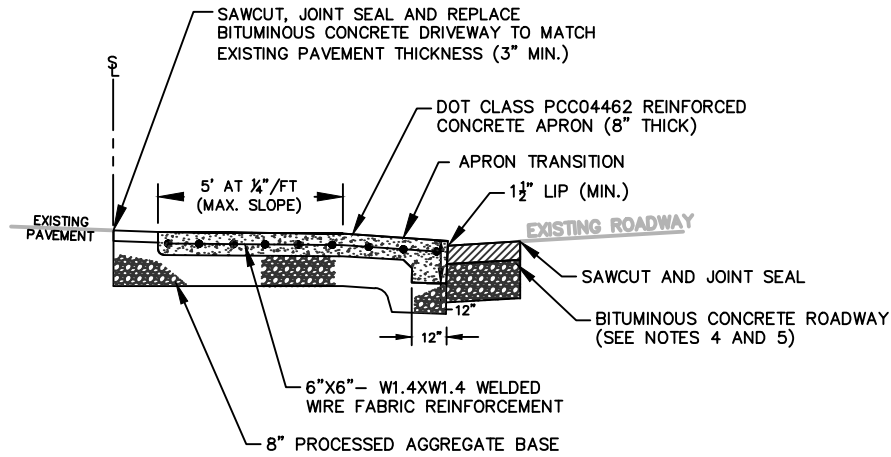


- NOTES:**
1. SEE RESPECTIVE DETAILS FOR CONCRETE SIDEWALK AND CURB REQUIREMENTS.
 2. REINFORCED CONCRETE SIDEWALK IS REQUIRED ACROSS DRIVEWAY WIDTH TO ACCOMMODATE VEHICLE LOADS. REFER TO ASSOCIATED DETAIL FOR ADDITIONAL INFORMATION.
 3. MINIMUM DISTANCE BETWEEN MULTIPLE DRIVEWAY OPENINGS SHALL BE 10'.
 4. MINIMUM DRIVEWAY WIDTH IS 10' AND MAXIMUM WIDTH IS 20' UNLESS OTHERWISE APPROVED BY THE TOWN ENGINEER.
 5. ALL CONSTRUCTION METHODS AND MATERIALS SHALL CONFORM TO CTDOT FORM 818 STANDARDS.

| | | |
|--|---------------------|-----------------|
| TOWN OF WETHERSFIELD ENGINEERING DEPARTMENT | | |
| STANDARD CONSTRUCTION DETAILS FOR IMPROVEMENTS IN TOWN RIGHT-OF-WAY | | |
| BITUMINOUS CONCRETE DRIVEWAY APRON (WITH SIDEWALK) | | |
| DRAWN BY: LB | DATE: OCTOBER 2017 | Sheet No. |
| REVIEWED BY: JM | REVISED: MARCH 2024 | 12 of 18 |
| APPROVED BY: DG | SCALE: NONE | |



PLAN



SECTION A-A

NOTES:

1. SEE RESPECTIVE DETAILS FOR CONCRETE SIDEWALK AND CURB REQUIREMENTS.
2. MINIMUM DISTANCE BETWEEN MULTIPLE DRIVEWAY OPENINGS SHALL BE 10'.
3. TOTAL HEIGHT OF LIP AND APRON TRANSITION SHALL BE 3" MAXIMUM ABOVE THE ROAD GUTTER. WHEN REQUIRED, REPLACE ADJACENT CONCRETE SIDEWALK SLABS AT 5% MAXIMUM SLOPE AS DIRECTED BY THE TOWN.
4. NEW PAVEMENT SHALL MATCH EXISTING PAVEMENT THICKNESS OR BE INSTALLED WITH A 4" MIN. THICKNESS, EXCEPT FOR MAJOR TOWN ROADS LISTED ON SHEET 16 WHERE A 5" MIN. PAVEMENT THICKNESS IS REQUIRED. TEMPORARY PAVEMENT REPAIRS ARE TYPICALLY NOT REQUIRED. SEE SHEET 2 FOR ADDITIONAL INFORMATION.
5. PROCESSED AGGREGATE BASE SHALL BE INSTALLED TO PROVIDE 12" MIN. THICKNESS BELOW THE BOTTOM OF THE EXISTING PAVEMENT SECTION.
6. MINIMUM DRIVEWAY WIDTH IS 10' AND MAXIMUM WIDTH IS 20' UNLESS OTHERWISE APPROVED BY THE TOWN ENGINEER.
7. ALL CONSTRUCTION METHODS AND MATERIALS SHALL CONFORM TO CTDOT FORM 818 STANDARDS.

**TOWN OF WETHERSFIELD
ENGINEERING DEPARTMENT**

**STANDARD CONSTRUCTION DETAILS FOR
IMPROVEMENTS IN TOWN RIGHT-OF-WAY**

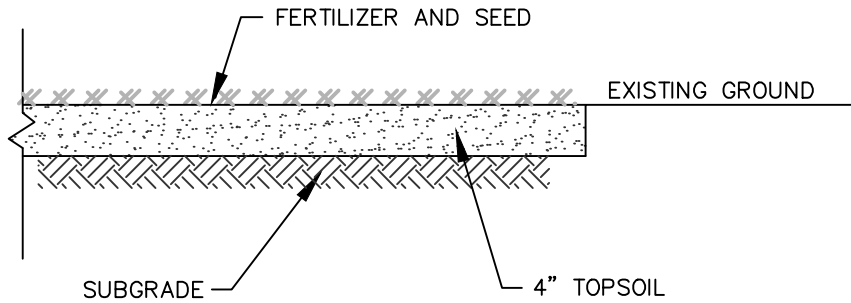
**CONCRETE DRIVEWAY
APRON**

DRAWN BY: LB
REVIEWED BY: JM
APPROVED BY: DG

DATE: OCTOBER 2017
REVISED: MARCH 2024
SCALE: NONE

Sheet No.

13 of 18



NOTES:

- PERMANENT GRASS SEED MIX SHALL BE APPLIED FROM APRIL 1 THROUGH JUNE 15 OR AUGUST 15 THROUGH OCTOBER 1 AND SHALL MEET SECTION M.13.04 IN CTDOT FORM 818 AS FOLLOWS:

| Species* | Proportion by Weight (Mass) (Pounds) | Minimum Purity (Percent) | Minimum Germination (Percent) |
|---|--------------------------------------|--------------------------|-------------------------------|
| VELVET BENTGRASS, (AGROSTIS CANINA) CERTIFIED VARIETY OR EQUAL CERTIFIED VARIETY | 25 | 96 | 85 |
| RED FESCUE (FESTUCA RUBRA L. SSP. RUBRA) CERTIFIED VARIETY OR EQUAL CERTIFIED VARIETY | 35 | 97 | 80 |
| PARTRIDGE PEA (CHAMAECRISTA FASCICULATA) CERTIFIED VARIETY | 10 | 95 | 90 |
| INDIAN GRASS (SORGHASTRUM NUTANS) CERTIFIED VARIETY | 15 | 95 | 90 |
| CANADA WILD RYE (ELYMUS CANADENSIS) CERTIFIED VARIETY | 5 | 95 | 90 |
| KENTUCKY BLUE GRASS (POA PRATENSIS) CERTIFIED VARIETY | 10 | 95 | 90 |

* UNDER NO CIRCUMSTANCES SHALL RYEGRASS, ITALIAN RYE OR ANY OTHER SEED BE ADDED TO THE SEED MIXTURE UNLESS APPROVED BY THE TOWN

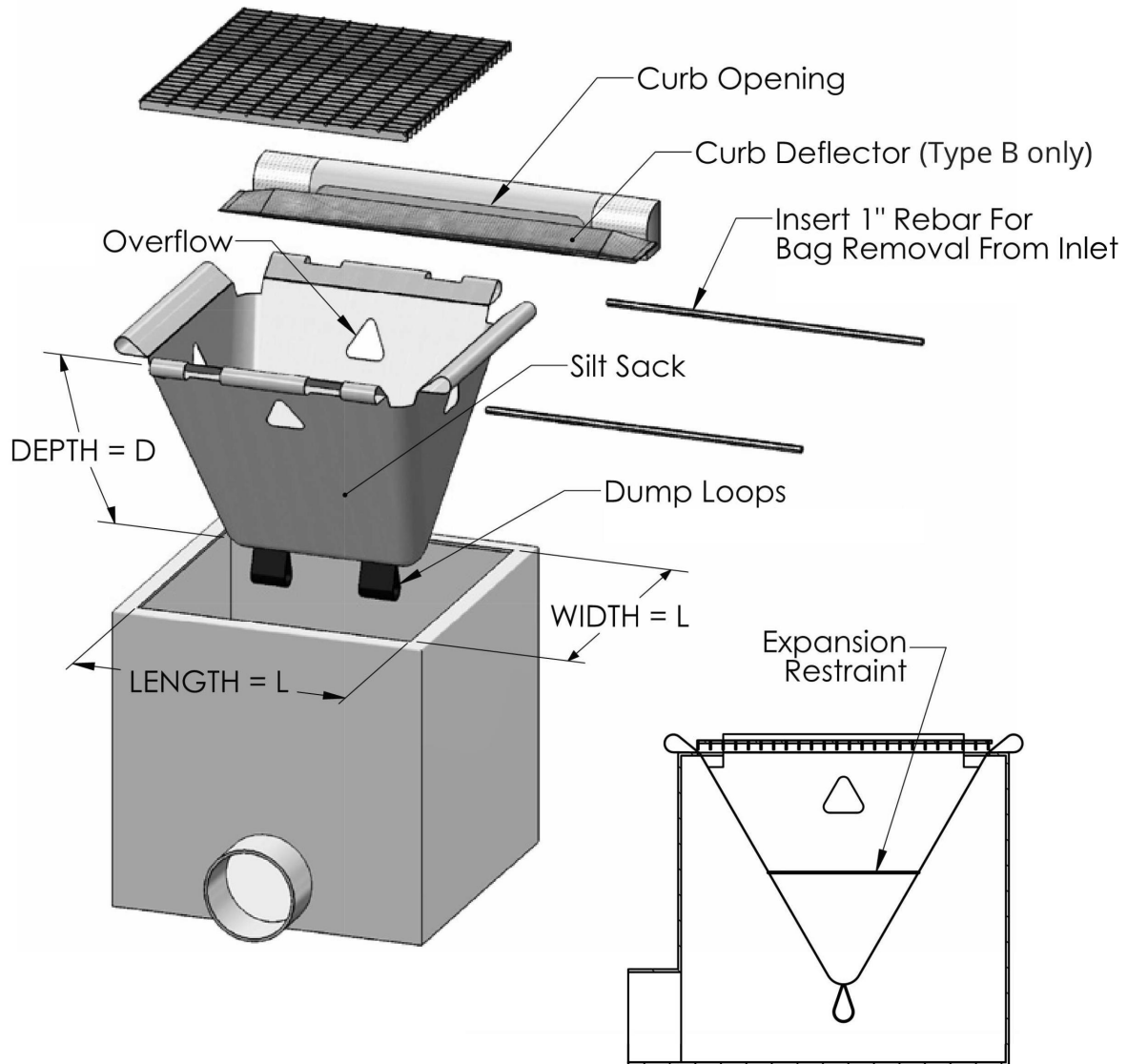
- WHEN TEMPORARY GRASS SEED IS REQUIRED, PERENNIAL RYEGRASS (LOLIUM PRENNE) SHALL BE APPLIED FROM MARCH 15 THROUGH OCTOBER 15.
- CONTRACTOR IS RESPONSIBLE TO PLACE ADDITIONAL LOAM, SEED, FERTILIZER AND/OR WATER AS NEEDED UNTIL GRASS IS ESTABLISHED TO THE SATISFACTION OF THE TOWN.

**TOWN OF WETHERSFIELD
ENGINEERING DEPARTMENT**

**STANDARD CONSTRUCTION DETAILS FOR
IMPROVEMENTS IN TOWN RIGHT-OF-WAY**

LAWN RESTORATION

| | | |
|-----------------|---------------------|------------------------------|
| DRAWN BY: LB | DATE: OCTOBER 2017 | Sheet No. 14 of 18 |
| REVIEWED BY: JM | REVISED: MARCH 2024 | |
| APPROVED BY: DG | SCALE: NONE | |



NOTES:

1. SILT SACKS SHALL BE HI-FLOW SILTSACK® 'TYPE A' FOR TYPE "C-L" CB TOPS AND 'TYPE B' WITH CURB DEFLECTORS FOR TYPE "C" CB TOPS OR OTHER STRUCTURES WITH CURB INLETS AS MANUFACTURED BY ACF ENVIRONMENTAL, INC OR APPROVED EQUAL.
2. SILT SACKS SHALL BE PROVIDED WITH INTERNAL OVERFLOWS.
3. SILT SACKS SHALL BE EMPTIED WHEN THEY HAVE COLLECTED 6" TO 12" OF SEDIMENT. INSPECT EVERY 1 TO 2 WEEKS AND AFTER EVERY MAJOR RAINFALL EVENT.

**TOWN OF WETHERSFIELD
ENGINEERING DEPARTMENT**

**STANDARD CONSTRUCTION DETAILS FOR
IMPROVEMENTS IN TOWN RIGHT-OF-WAY**

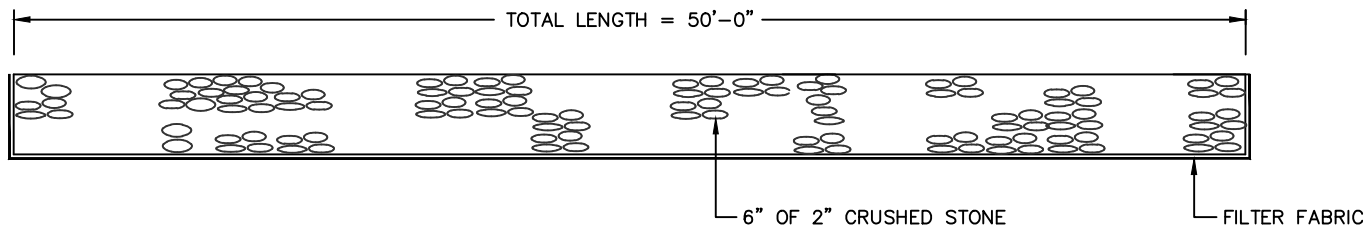
SILT SACK IN CATCH BASIN

DRAWN BY: DK
REVIEWED BY: JM
APPROVED BY: DG

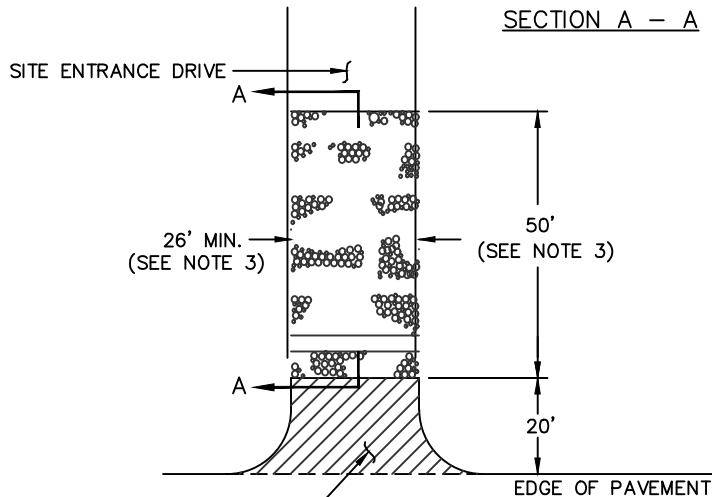
DATE: OCTOBER 2017
REVISED: MARCH 2024
SCALE: NONE

Sheet No.

15 of 18



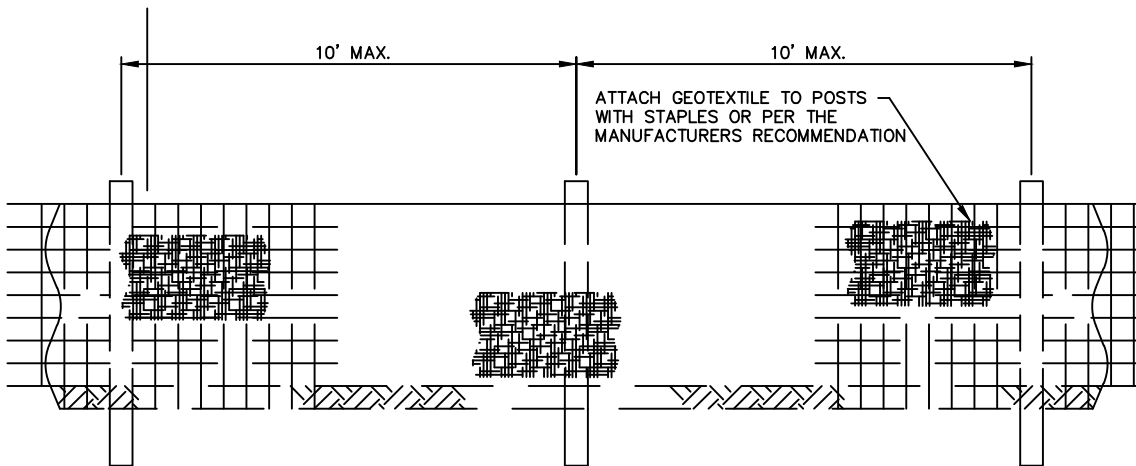
SECTION A - A



- NOTES:
1. MAINTAIN PAVEMENT AT APRON IN GOOD CONDITION THROUGHOUT THE CONSTRUCTION PERIOD.
 2. ROADWAY SHALL BE SWEEP DAILY TO REMOVE ANY MATERIAL THAT MAY BE TRACKED ONTO THE PAVEMENT.
 3. FOR INDIVIDUAL RESIDENTIAL LOTS, THE LENGTH OF THE CONSTRUCTION ENTRANCE MAY BE REDUCED TO 20' MINIMUM AND THE WIDTH MAY BE REDUCED TO 12' MINIMUM.

CONSTRUCTION ENTRANCE

NOT TO SCALE

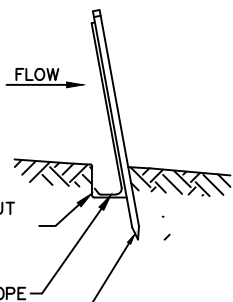


ELEVATION

SILT FENCE

NOT TO SCALE

- NOTES:
1. SEDIMENT CONTROL FABRIC TO BE A GEOTEXTILE MATERIAL TREATED TO RESIST DEGRADATION FROM EXPOSURE TO SUNLIGHT.
 2. FOR EACH SPECIFIC USE, ONLY GEOTEXTILES ON THE CONNECTICUT DEPARTMENT OF TRANSPORTATION APPROVED LIST ARE TO BE USED.
 3. AFTER FOLDING FABRIC EDGE, BACKFILL TRENCH WITH ORIGINAL SOIL AND BUTTRESS THE SPLAY WITH MULCH OR LEAF LITTER.



SECTION

1 1/2" (NOM.) SQUARE X 42" (MIN.) HARDWOOD STAKE OR STEEL POST, DRIVEN INTO GRADE 12" MINIMUM INSTALLED 10' APART (MAX.), AND CANTED 2"-20" (MAX.) INTO SLOPE

**TOWN OF WETHERSFIELD
ENGINEERING DEPARTMENT**

**STANDARD CONSTRUCTION DETAILS FOR
IMPROVEMENTS IN TOWN RIGHT-OF-WAY**

**CONSTRUCTION ENTRANCE
AND SILT FENCE**

DRAWN BY: LB
REVIEWED BY: JM
APPROVED BY: DG

DATE: OCTOBER 2017
REVISED: MARCH 2024
SCALE: NONE

Sheet No.

16 of 18

TOWN ARTERIAL AND COLLECTOR ROADS REQUIRING 5" MIN. PAVEMENT THICKNESS

(SEE NOTE 3)

| ROAD NAME | FROM | TO |
|-----------------------|------------------------------------|------------------------------------|
| CHARTER ROAD | ROCKY HILL TOWN LINE | MAPLE STREET (STATE RTE 3) |
| CHURCH STREET | WOLCOTT HILL ROAD | MAIN STREET |
| FOLLY BROOK BOULEVARD | NOTT STREET | HARTFORD TOWN LINE |
| GOFF ROAD | PROSPECT STREET (STATE RTE 287) | NOTT STREET |
| GRISWOLD ROAD | PROSPECT STREET (STATE RTE 287) | MAPLE STREET (STATE RTE 3) |
| HANG DOG LANE | HIGHLAND STREET | MAPLE STREET (STATE RTE 3) |
| HARTFORD AVENUE | STATE STREET | HARTFORD TOWN LINE |
| HIGHLAND STREET | ROCKY HILL TOWN LINE | GRISWOLD ROAD |
| JORDAN LANE | SILAS DEANE HIGHWAY (STATE RTE 99) | HARTFORD AVENUE |
| MAIN STREET | WELLS ROAD | STATE STREET |
| MARSH STREET | MAIN STREET | MEADOW VIEW ROAD |
| MIDDLETOWN AVENUE | ROCKY HILL TOWN LINE | MAPLE STREET (STATE RTE 3) |
| MILL STREET | MAPLE STREET (STATE RTE 3) | MIDDLETOWN AVENUE |
| NOTT STREET | BERLIN TURNPIKE (STATE RTE 5/15) | SILAS DEANE HIGHWAY (STATE RTE 99) |
| RIDGE ROAD | PROSPECT STREET (STATE RTE 287) | HARTFORD TOWN LINE |
| SPRING STREET | MAPLE STREET (STATE RTE 3) | WELLS ROAD |
| STATE STREET | HARTFORD AVENUE | MAIN STREET |
| THORNBUSH ROAD | HIGHLAND STREET | PROSPECT STREET (STATE RTE 287) |
| TOWN LINE ROAD | CHARTER ROAD | ROCKY HILL TOWN LINE |
| TWO ROD HIGHWAY | NEWINGTON TOWN LINE | HIGHLAND STREET |
| WELLS ROAD | SILAS DEANE HIGHWAY (STATE RTE 99) | MAIN STREET |
| WOLCOTT HILL ROAD | PROSPECT STREET (STATE RTE 287) | HARTFORD TOWN LINE |

STATE ROADS REQUIRING CTDOT ENCROACHMENT PERMITS

(SEE NOTE 2)

| ROAD NAME | FROM | TO |
|---------------------------------------|---------------------------------------|---------------------------------------|
| BERLIN TURNPIKE (STATE RTE 5/15) | NEWINGTON TOWN LINE | WILBUR CROSS HIGHWAY (STATE RTE 5/15) |
| BERLIN TURNPIKE (STATE RTE 314) | WILBUR CROSS HIGHWAY (STATE RTE 5/15) | JORDAN LANE (STATE RTE 314) |
| BERLIN TURNPIKE (STATE RTE 543) | JORDAN LANE (STATE RTE 314) | HARTFORD TOWN LINE |
| INTERSTATE 91 | HARTFORD TOWN LINE | ROCKY HILL TOWN LINE |
| JORDAN LANE (STATE RTE 314) | BERLIN TURNPIKE (STATE RTE 5/15) | SILAS DEANE HIGHWAY (STATE RTE 99) |
| MAPLE STREET (STATE RTE 3) | ROCKY HILL TOWN LINE | ELM STREET |
| NOTT STREET (STATE ROUTE 422) | SILAS DEANE HIGHWAY (STATE RTE 99) | HARTFORD AVENUE |
| PROSPECT STREET (STATE RTE 287) | NEWINGTON TOWN LINE | MAPLE STREET (STATE RTE 3) |
| SILAS DEANE HIGHWAY (STATE RTE 99) | ROCKY HILL TOWN LINE | HARTFORD TOWN LINE |
| STATE ROUTE 3 | ELM STREET | GLASTONBURY TOWN LINE |
| WELLS ROAD (STATE RTE 175) | NEWINGTON TOWN LINE | SILAS DEANE HIGHWAY (STATE RTE 99) |
| WILBUR CROSS HIGHWAY (STATE RTE 5/15) | BERLIN TURNPIKE (STATE RTE 5/15) | HARTFORD TOWN LINE |

NOTES:

- ALL PAVEMENT REPAIRS WITHIN TOWN ROADS SHALL BE COMPLETED IN ACCORDANCE WITH DETAILS PROVIDED IN THIS STANDARD.
- ALL PAVEMENT REPAIRS IN STATE ROADS REQUIRE A CTDOT ENCROACHMENT PERMIT AND SHALL BE COMPLETED AS DIRECTED BY THE CTDOT.
- REFER TO THE TOWN MAP SHOWING TRAFFIC CONTROL REQUIREMENTS BY STREET AND PROVIDE A UNIFORMED POLICE OFFICER OR CERTIFIED FLAG PERSON AS REQUIRED.

**TOWN OF WETHERSFIELD
ENGINEERING DEPARTMENT**

**STANDARD CONSTRUCTION DETAILS FOR
IMPROVEMENTS IN TOWN RIGHT-OF-WAY**

**PAVEMENT REPAIR REQUIREMENTS
FOR MAJOR ROADS**

| | | |
|-----------------|---------------------|------------------------------|
| DRAWN BY: LB | DATE: OCTOBER 2017 | Sheet No. 17 of 18 |
| REVIEWED BY: JM | REVISED: MARCH 2024 | |
| APPROVED BY: DG | SCALE: NONE | |

MILLING FOR PAVEMENT RESTORATION

THE FOLLOWING WORK SHALL BE COMPLETED WHEN MILL AND OVERLAY PAVEMENT RESTORATION IS PERFORMED WITHIN THE TOWN'S RIGHT-OF-WAY FOR SMALL AREAS WITH LIMITED IMPACTS:

- COMPLETE PERMANENT PAVEMENT REPAIRS FOR DISTURBED AREAS WITH PAVEMENT THICKNESS AS SPECIFIED ON SHEET 2 OF 17 (TEMPORARY PAVEMENT REPAIRS ARE NOT REQUIRED)
- CONTRACTOR SHALL MEET WITH TOWN STAFF PRIOR TO CONSTRUCTION TO MARK REQUIRED PAVEMENT RESTORATION LIMITS
- WITHIN THE 45-DAY TO 90-DAY SETTLEMENT PERIOD, MILL EXISTING PAVEMENT TO A MINIMUM 2" DEPTH (SEE NOTE BELOW)
- USE BARCO TRIMMER TO CUT VERTICAL EDGES ALONG ALL PERIMETER JOINTS
- SAWCUT CORNERS AS REQUIRED AND MANUALLY REMOVE REMAINING PAVEMENT WITHIN THE RESTORATION AREA
- USE MECHANICAL SWEEPER TO CLEAN THE MILLED SURFACE IMMEDIATELY
- USE SHOVELS TO MANUALLY REMOVE ANY SPALLING PAVEMENT ON THE MILLED SURFACE AND USE HAND-HELD BLOWER TO REMOVE ANY REMAINING LOOSE MATERIAL IMMEDIATELY PRIOR TO PAVING
- SPREAD TACK COAT FROM A HEATED KETTLE BY SPRAYING OVER THE ENTIRE MILLED SURFACE AND VERTICAL JOINTS, WHICH MUST BE MAINTAINED AT THE MANUFACTURER'S RECOMMENDED TEMPERATURE.
- INSTALL AND COMPACT 2" HMA S0.5 OR BITUMINOUS CONCRETE CLASS 2 WITH A FULL-SIZE PAVING MACHINE AND AN 8 TO 12 TON TANDEM DRUM ROLLER
- APPLY RUBBER COMPOUND HOT-POURED SEALANT TO ALL JOINTS BETWEEN NEW AND EXISTING PAVEMENT WITHIN SEVEN (7) CALENDAR DAYS AFTER PAVING IS COMPLETE

NOTE:

A MINIMUM 2.5" MILLING DEPTH WITH INSTALLATION OF A $\frac{1}{2}$ " TO $\frac{3}{4}$ " LEVELING COURSE IS REQUIRED WHEN MILL AND OVERLAY PAVEMENT RESTORATION EXCEEDS A LENGTH OF 30' MEASURED ALONG THE ROAD CENTERLINE

**TOWN OF WETHERSFIELD
ENGINEERING DEPARTMENT**

**STANDARD CONSTRUCTION DETAILS FOR
IMPROVEMENTS IN TOWN RIGHT-OF-WAY**

**MILLING FOR PAVEMENT
RESTORATION**

| | | |
|-----------------|---------------------|-----------------|
| DRAWN BY: LB | DATE: OCTOBER 2017 | Sheet No. |
| REVIEWED BY: JM | REVISED: MARCH 2024 | 18 of 18 |
| APPROVED BY: DG | SCALE: NONE | |

TOWN OF WETHERSFIELD
RIGHT-OF-WAY CONSTRUCTION INSPECTION
REQUIREMENTS

**Town of Wethersfield
Engineering Department**

Right-of-Way Construction Inspection Requirements

Required Notifications

Contractors are required to notify the Engineering Department at 860-721-2850 or EngineeringInspections@wethersfieldct.gov a MINIMUM of:

- 24-hours before starting any work
- 4-hours before placing pavement within roads (excludes driveway aprons)
- 4-hours before pouring any concrete (sidewalks, ramps, curbs, etc.)

Required Inspections

Inspections by Town staff are required at the following critical points during construction:

1. BEFORE placement of new processed aggregate base to ensure it is placed at the proper depth
2. BEFORE placement of pavement on processed aggregate base or milled surfaces to verify new pavement thickness for all repairs
3. BEFORE concrete pours to inspect forms for proper thickness, dimensions, slopes, elevations, dowels and reinforcing wire mesh (when appropriate) – use of 2x4 boards for sidewalk and ramp forms is NOT allowed

Important Note:

If required notifications were provided to the Engineering Department and staff is not onsite to perform these inspections, the contractor may proceed as follows:

- Obtain pictures showing required depths prior to placing processed aggregate base and pavement, and concrete forms (preferably including a measurement tool)
- Continue with the scheduled work as planned
- Email pictures showing the proper excavation depths and concrete thickness EngineeringInspections@wethersfieldct.gov - these pictures must be received by the Engineering Department within THREE (3) CALENDAR DAYS

Failure to provide required notices or suitable documentation may result in revocation of the permit and/or Contractor having to excavate or core to verify material thicknesses, provide material tickets or otherwise confirm all work was completed in accordance with Town standards. Contractors may be required to re-excavate and replace backfill, base material, and surface materials if deemed necessary by the Town.

Refer to the General Excavation Permit and the “Town of Wethersfield – Standard Construction Details”, latest revision, for additional information.

TOWN OF WETHERSFIELD
CODE CHAPTER 139 - STREETS AND SIDEWALKS
ARTCICLE III – EXCAVATIONS

ARTICLE III
Excavations

§ 139-16. Definitions.

The following words, when used in this Article, shall have the meaning ascribed to them in this section, except in those instances where the context clearly indicates otherwise:

PERSON — Includes any natural person, partnership, firm, association, corporation or organization of any kind.

STREET — Any public street, avenue, road, square, alley, highway or other public place located in the Town of Wethersfield, and shall include sidewalks and driveway aprons.

§ 139-17. Permit and license required.

It shall be unlawful for any person to open or to make any excavation of any kind in any of the streets in the Town of Wethersfield without first securing a license and a permit therefor, as hereinafter provided.

§ 139-18. Licensing and insurance provisions.

- A. All contractors excavating within Town streets shall be licensed. The contractor applying for license shall furnish the Town with a valid insurance certificate completed by his agent or insurer for the minimum amount described as follows:
- (1) Liability:
 - (a) Bodily injury limits of \$500,000 each person/\$500,000 each accident.
 - (b) Property damage limits of \$500,000 each accident.
- B. The insurance shall cover the entire contract period as well as the maintenance period, and in the event that the insurance expires during this time, the contractor shall furnish the Town with a renewal certificate at least 10 days prior to expiration.
- C. The property damage insurance shall specifically cover damage to underground pipes and conduits damaged while using powered or mechanized equipment to excavate in the public right-of-way.
- D. Before a license is granted, the applicant must file with the Engineering Division a surety bond in the sum of not less than \$10,000 made on a form provided for that purpose. Said surety bond may be cash or written by an indemnity or surety company

authorized to transact business in Connecticut and approved by the Town Manager or his agent. Excavator's licenses are not transferable. Before any permit shall be issued to open or excavate any street in the Town, the applicant shall pay to the Town Engineer a permit fee in the amount of \$35 to cover the cost of inspection and other incidental services in connection therewith. Any work performed without obtaining the necessary permits and licenses as prescribed in this article shall result in a doubling of the fees as contained in this section. Permits shall be valid for a period of 30 days. If the estimated value of the work exceeds \$10,000 in the opinion of the Town Engineer, he may require the contractor make application for multiple permits for the various components of the work. The Town Engineer or his designated representative may at any time cancel or suspend permits for just cause.

§ 139-19. Permits.

Any person who desires to make any opening or excavation in any of the streets in the Town of Wethersfield shall make application to the Engineering Division, in writing, for that purpose. Such an application shall be made upon blanks to be furnished by the Town and shall contain the name of the applicant, the exact location of the proposed opening or excavation, the approximate size or depth thereof, the CALL BEFORE YOU DIG permit number and an agreement on the part of the applicant that the work shall be done in full compliance with all related ordinances of the Town and the laws of the State of Connecticut and that the applicant shall hold the Town harmless from and indemnify it against any and all actions, suits, demands, payments, costs and charges for or by reason of the proposed opening or excavation and all damages to persons or property resulting in any manner therefrom or occurring in the prosecution of corrected work or from any other related matter.

§ 139-20. Construction procedures.

- A. Any person who opens or excavates any street in the Town shall thoroughly and completely refill the opening or excavation, puddling and ramming so as to prevent any settling thereafter; and shall restore the surface to the same condition as it was before the opening or excavation, and such restoration shall be in accordance with the specifications of the Engineering Division of the Town of Wethersfield for roadway standards of streets in the Town. The surface shall conform to the proper grade and be of the same surface covering as the part of the thoroughfare

immediately adjoining the opening. If, within five years after the restoration of the surface, defects appear, the contractor shall repair the defect within 12 hours. If the Town Engineer or his representative deems that an emergency exists, repairs will be completed by the most expeditious means possible. All repair costs shall be reimbursed to the Town or charged to the excavator's surety bond.

- B. The backfill of trenches within the roadway limits and paved areas shall be placed in layers not more than 12 inches thick and shall be thoroughly compacted by tamping or other approved means to the satisfaction of the Town Engineer or his designated agent. The materials used for backfill shall be subject to the inspection and approval of the Town Engineer or his agent, and if, in his opinion, the excavated material is unsuitable for backfill, the contractor shall dispose of this unsuitable material and substitute approved bank run gravel or other material in the amounts and proportions specified by the Town Engineer. When the backfill has been completed within 12 inches of the finished pavement on the surface grade, the first eight inches shall be filled and compacted using an approved grade of processed stone and then covered with four inches of bituminous concrete placed in two lifts, as shown on the standard drawings of the Engineering Division. All trenches shall be covered with a suitable bituminous patching material at the end of every workday.
- C. Final patching shall be completed within six months and shall conform to the Town of Wethersfield Standard Roadway Construction Drawings and Specifications.¹
- D. All other work in connection with openings in any street, including excavation, protection, refilling and temporary paving, shall be done by the applicant at his expense, and all such work shall be subject to the provisions of this article and to the supervision and approval of the Town Engineer.

§ 139-21. Notification of Police and Fire Departments.

The contractor shall notify the Police Department and the Fire Department 24 hours in advance of making any excavation which requires blocking more than 50% of the width of the street. Police protection, if required, shall be at the expense of the contractor.

1. Editor's Note: Said documents are on file in the Town offices.

§ 139-22. Restrictions.

- A. No opening or excavation in any street shall extend from the curblineline into the highway a distance greater than one foot beyond the center line of the street before being refilled and the surface of the highway restored to a condition safe and convenient for travel to the satisfaction of the Town Engineer.
- B. No more than 500 feet longitudinally shall be opened in any street at any one time.
- C. The work of excavation shall be so conducted as not to interfere with the water mains, sewers or their lateral connections or any other subsurface utility until permission of the proper authorities has been obtained.
- D. The contractor shall at all times at his own expense preserve and protect from injury all adjoining property by providing proper foundations and taking other measures suitable for the purpose. The contractor shall, at his own expense, shore up and protect all buildings, walls, fences, or other property likely to be damaged during the progress of the excavation work and shall be responsible for all damage to public or private property or highways resulting from his operations.
- E. No tunneling to include pipe jacking and pneumatic or vibratory boring or piercing tools shall be allowed without the express approval of the Town Engineer and permission therefor endorsed upon the permit. The backfilling of a tunnel excavation shall be made only in the presence of the Town Engineer or an inspector designated by him and shall be done only in a method approved by him.
- F. No contractor shall make a trench cut of over 48 inches in width without first obtaining special permission from the Town Engineer or his designated agent.
- G. On all streets, a temporary paving satisfactory to the Town Engineer, thoroughly bound and compacted, shall be installed flush with the surface of the adjoining paving at the end of each work day.
- H. As the excavation work progresses, all streets shall be thoroughly cleaned of all rubbish, excess earth, rock and other debris. The contractor shall take necessary precautions to prevent and avoid dust and to keep the streets clean each day. All cleanup operations shall be accomplished at the expense of the contractor and shall be carried out to the satisfaction of the Town Engineer.

- I. Each contractor shall conduct and carry out excavation work in such a manner as to avoid unnecessary inconvenience and annoyance to the general public and occupants of neighboring property and in strict compliance with the provisions of Chapter 105, Noise Control, of the Code of the Town of Wethersfield.

§ 139-23. Safeguards.

During the making of any street excavation, every reasonable precaution shall be taken by the applicant to keep the street in a safe and passable condition both day and night. Unless emergency conditions exist, construction or maintenance operations which will result in the narrowing or closing of the travel portion of any arterial street will not be permitted prior to start of peak hour traffic. Traffic-control devices must be set up prior to the start of construction or maintenance operations and shall be properly maintained during the time such special conditions exist. They shall remain in place only as long as they are needed and shall be immediately removed thereafter. Where operations are performed in stages, there shall be in place only those devices that apply to the conditions present during the stage in progress, and such devices shall be covered or out of the view of traffic at times when they do not apply. Payments to traffic flagmen or police where required by the Chief of Police or the Town Engineer shall be the responsibility of the contractor.

§ 139-24. Penalties for offenses.

The penalty for each violation or offense shall be \$100 and each and every twenty-four-hour period of failure or neglect to comply with the provisions of this article shall be deemed a separate offense or violations. Licensed contractors failing to obtain the required permit shall also be subject to license suspension for a period of not more than 90 days.